

2021 ANNUAL SECURITY REPORT
Reporting on the Calendar Years 2018, 2019, and 2020



Published by the Pueblo Community College

Police Department

and

Dean of Students

Contents

2021 Pueblo Community College Annual Security Report4

Executive Summary4

 Preparing the Annual Security Report.....5

 Law Enforcement Qualifications Authority and Working Relationship with Other Enforcement Agencies5

 Reporting a Crime.....5

 Reporting a Crime to a Campus Security Authority (CSA)5

 Campus Security Authorities6

 Exemption from Reporting6

 Confidential Crime Reporting6

 Crime Prevention.....6

 Safety Escorts6

 Security Reviews.....6

 Security Lighting Assessment6

 Alcohol Awareness6

 Registered Sex Offender Policy Statement.....7

 Timely Warnings7

 Emergency Preparedness and Evacuation Procedures7

 Emergency Notifications.....8

 Emergency Operations Plan8

 Emergency Response Guide(s)8

 Standard Response Protocol (SRP)9

 Security of and Access to Campus Facilities9

 Security Considerations Used in the Maintenance of Campus Facilities10

 Drug, Alcohol, and Substance Abuse Policy Statements10

 2020 Biennial Review10

 Drug and Alcohol Awareness and Prevention Program11

 Sex Offense Policy Statements14

 Disclosure of Results of Disciplinary Proceedings Policy Statement17

 Policy for Reporting the Annual Disclosure of Crime Statistics17

 Crime Statistics Information18

 Pueblo Campus18

 Fremont Campus20

 PCC Southwest Site (Durango).....22

 PCC Southwest Site (Bayfield)24

Any area underlined is a hyperlink which will direct you to a website.

PCC Southwest Campus (Mancos).....	26
Fire Safety Report & Missing Student Notification	28
APPENDIX A	29
Colorado Revised Statutes related to this document:	29
APPENDIX B	33
Victim Assistance and Drug/Alcohol Referral Programs and Resources:	33
Pueblo Campus:	33
Fremont Campus:	33
Important PCC Public Safety Internet Links.....	35
APPENDIX C	36
A. Definitions.....	36
B. Education and Prevention Programs	37
C. Procedures for Reporting a Complaint.....	41
D. Assistance for Victims: Rights and Options	45
PCC Financial Aid Services	46
Resources for victims of Domestic Violence, Dating Violence, Sexual Assault & Stalking	47
E. Adjudication of Violations	48
Confidentiality	49
Sanctions and Protective Measures	49
Sex Offender Registration.....	49
Prohibition on Retaliation	50
Pueblo Community Colleges’ Geographic Description.....	50

Any area underlined is a hyperlink which will direct you to a website.

2021 Pueblo Community College Annual Security Report

Executive Summary

In compliance with the Jeanne Clery Disclosure of Campus Security Policy and Campus Crime Statistics Act of 1990, also known as the Clery Act, the Pueblo Community College Annual Security Report (ASR) is published each year in order to provide accurate information to potential and current students and employees about campus crime statistics, campus crime logs, and policies regarding the safety and security of the campus community. This report covers the main Pueblo Campus of Pueblo Community College (PCC), as well as other campuses/sites: Fremont Campus, PCC Southwest Campus (Mancos), PCC Southwest Site (Durango), and PCC Southwest Site (Bayfield) and all policies and procedures pertain to each campus/site. PCC is a non-residential campus and does not offer off-campus locations for recognized student organizations.

Annually on or before October 1, a notification of the reports availability is emailed to all current students and employees which consists of the last three calendar years – 2018, 2019, and 2020. A link for the current year's ASR, containing a summary of its contents and where to obtain a copy. Prospective students who visit one of the campuses are given a notification of availability form by Enrollment Services. Human Resources attaches notification of availability to job postings for those potential employees who apply on-line. As noted, a notification of the report's availability is emailed to all current students and employees, with a website link of the current year's ASR, a summary of its contents, and how to access the report.

A printed copy of the ASR may be obtained at the PCC Police Department, and Office of the Vice President of Student Success

Pueblo Community College posts the Annual Security Report (ASR) on its [website](#) under the Police Department.

PCC Chief of Police
William Brown

Dean of Students
Vernon J. James



Any area underlined is a hyperlink which will direct you to a website.

Preparing the Annual Security Report

The PCC Police Department and the PCC Dean of Students (DOS) are responsible for the preparation of this annual report. The DOS collaborates with the PCC Police Department, the College Emergency Management Team (CEMT), and other College units and personnel to gather the information for this report.

Law Enforcement Qualifications Authority and Working Relationship with Other Enforcement Agencies

Pueblo Community College maintains its own professional police. The department is staffed with experienced State-Certified peace officers who have been trained in Colorado Peace Officer Standards and Training (P.O.S.T.) procedures. PCC maintains four campuses (Pueblo, Fremont, PCC Southwest Sites (Durango and Bayfield), and PCC Southwest Campus (Mancos) located in the state of Colorado. PCC's main campus is located in the City and County of Pueblo; therefore, working closely with the Pueblo County Sheriff's Office and the Pueblo Police Department. Memorandums of Understanding are in place with both agencies for immediate mutual aid assistance. The Fremont Campus is located in Cañon City and is staffed with a State-Certified peace officer and a security guard. There is a Memorandum of Understanding with the Cañon City Police Department for mutual aid assistance. The PCC Southwest Campus and Durango Site is staffed with private security guards. Law enforcement services are also provided by the Durango Police Department for the PCC Southwest Site in Durango, the Bayfield Marshal's Office for the Bayfield Site, and the Montezuma County Sheriff's Office for the PCC Southwest Campus in Mancos.

Reporting a Crime

In the event of any crime, fire, or emergency on campus or its surrounding area(s), students and employees should immediately notify the law enforcement entity for the respective location, as follows:

Pueblo Campus - Pueblo Community College PCC Police Department, Student Center, Room 152 at 719.549.3355, 911.

City of Pueblo – Pueblo Police Department, 200 S. Main St, Pueblo, Co 81003, at 719.553.2538

Pueblo County – Pueblo County Sheriff's Office, 909 Court St, Pueblo, CO 81003 at 719.583.6250

Fremont Campus - Pueblo Community College Police Department (Room L104), at 719.296.6130 or 911

City of Cañon City – Cañon City Police Department, 161 Justice Center Road, Cañon City, CO 81212 at 719.276.5600

Fremont County - Fremont County Sheriff's Officer, 100 Justice Center Road, Cañon City, CO 81212 at 719.276.5555

PCC Southwest Site/City of Durango – Durango Police Department, 990 E. 2nd Ave., Durango, CO 81301 at 970.385.2900 or 911

PCC Southwest Campus/City of Cortez - Montezuma County Sheriff's Office, 730 E Driscoll Street, Cortez, CO 81321 at 970.565.8452 or 911

PCC Southwest Site/City of Bayfield – Bayfield Marshal's Office, 1199 Bayfield Parkway, Bayfield, CO 81122 at 970.884.6053 or 911

Reporting a Crime to a Campus Security Authority (CSA)

Although Pueblo Community College encourages all criminal incidents be reported to law enforcement a student may report a crime to a Campus Security Authority; however, students may also report a crime to a Campus Security Authority (CSA) who is responsible for forwarding non-identifying information to the PCC Police Department for inclusion in the Annual Security Report, regardless of whether the victim chooses to file a report with law enforcement. CSAs are defined by Clery "as someone who has significant responsibility for students and campus activities. The following are a few examples of CSAs:

Any area underlined is a hyperlink which will direct you to a website.

Campus Security Authorities

Club Sponsors
 PCC Police Department
 Disability Resources and Services Staff
 Student Life Staff

Campus Security Authorities

Vice President of Student Success
 Department Chairs
 Success Coaches
 Title IX Coordinators

Exemption from Reporting

Licensed professional mental health counselors and pastoral counselors (employed by religious organizations to provide confidential counseling) who are working within the scope of their license or religious assignment at the time they receive the crime report are exempt from reporting under the Clery Act.

Confidential Crime Reporting

A witness of a crime who wishes to remain anonymous may call the following to report a crime anonymously. Please remember these are voice message system only and immediate action will not be taken.

- Pueblo Campus - Pueblo Crime Stoppers at 719.549.7867
- Fremont Campus - Fremont County Crime Stoppers at 719.275.7867
- PCC Southwest Site and PCC Southwest Campus - Durango-La Plata Crime Stoppers at 970.247.1112
- [Safe2Tell](https://www.safe2tell.org/): 1.877.542.SAFE

Crime Prevention

The college offers a variety of safety programs and services throughout the year and/or upon request. The focus of these programs and services changes depending on need. Currently, the following are offered:

Safety Escorts

Police Officers and security guards provide escorts to and from the parking lots as requested. Students, staff, and faculty members are encouraged to walk with friends or co-workers if a police officer or guard is unavailable.

**Security Reviews**

Departments throughout the college request a security review of their safety plan by the PCC Police Department to evaluate and make recommendations for security enhancements.

Security Lighting Assessment

An assessment of the lighting at each campus is conducted to ensure optimal security for our campus population.

Alcohol Awareness

Officers assist student groups in providing alcohol awareness training as it pertains to operating a motor vehicle while under the influence of alcohol.

Registered Sex Offender Policy Statement

In accordance to the Campus Sex Crimes Prevention Act of 2000, which amends the Jacob Wetterling Crimes Against Children and Sexually Violent Offender Registration Act, the Jeanne Clery Act and the Family Educational Rights and Privacy Act of 1974, the College is providing a link to the Colorado State Sex Offender Registry. All sex offenders are required to register in the state of Colorado and to provide notice of each institution of higher education in Colorado at which the person is employed, carries a vocation or is a student. In Colorado, convicted sex offenders must register with the Colorado Bureau of Investigation (CBI). [The Colorado sex offender website](#).

Additional information regarding registered sex offenders are available from the following resources:

[Pueblo Police Department](#), 200 South Main Street, Pueblo, CO 81003, 719.549.1200

[Cañon City Police Department](#), 161 Justice Center Road, Cañon City, CO 81212, 719.276.5600

[Pueblo County Sheriff's Office](#), 909 Court Street, Pueblo, CO 81003, 719.583.6125

[Fremont County Sheriff's Office](#), 100 Justice Center Road, Cañon City, CO 81212, 719.276.5555

[Durango Police Department](#), 990 East 2nd Avenue, Durango, CO 81301, 970.375.4700

[La Plata County Sheriff's](#), 742 Tuner Dr., Durango, CO 81301, 970.247.1157

[Montezuma County Sheriff's Office](#), 730 East Driscoll Street, Cortez, CO 81321, 970.565.5452

[Bayfield Marshal's Office](#), 1199 Bayfield Parkway, Bayfield, CO 81122, 970.884.9636

Timely Warnings

It is sometimes necessary to notify the campus community about criminal incidents which constitute a serious threat and that have occurred on Pueblo Community College properties or in contiguous public properties. As a result, Pueblo Community College has developed a timely warning procedure to alert campus community members in order to help prevent similar crimes and protect the campus community. Timely warnings are triggered by crimes that have already occurred, but represent a serious or continuing threat to the campus community. The warning will be issued as soon as the pertinent information is available. The decision to issue a timely warning will be a collaborative effort between the PCC Police Chief or his/her designee and the President or his/her designee.

Notifications may take the form of text messages, emails, scrolling messages, public address system announcements, etc. The PCC Police Chief will take into account the nature of the incident, the continuing danger to the campus community, as well as the possible risk of compromising law enforcement efforts to determine whether a timely warning is warranted.

Emergency Preparedness and Evacuation Procedures

Pueblo Community College implements regular drills in such areas as fires, lockout / lockdown, tornadoes, etc. Each test, regardless of its size, will have documented a description of the test, the date held, the start and end times, whether the test was unannounced or announced as well as any other pertinent information. These tests are a culmination between the Pueblo Community College Police Department and the College Emergency Management Team. The departments work closely in order to plan, implement, document and assess every test. Each test of the emergency response and evacuation system serves as a learning experience, so that Pueblo Community College can fine tune the existing system as well as make adjustments for future needs. These tests also serve as training opportunities for the campus community as a whole. It is through this training that students, faculty, and staff can become more aware of their surroundings and the best course of action during given scenarios. Such areas as knowing fire escape routes, locations of fire suppression devices, best shelter in place strategies, and a host of other emergency preparedness procedures are just some of the areas that are touched on during these tests.

Any area underlined is a hyperlink which will direct you to a website.

Emergency Notifications

Emergency notification is triggered by an event that is currently occurring on or imminently threatening the campus. This shall include a dangerous situation involving an immediate threat to the health or safety of campus members. This notification will be sent immediately upon confirmation that a dangerous situation or emergency exists or threatens. The ultimate authority for decisions related to emergencies rest with the College President. The President has delegated this authority to the PCC Police Chief or his/her designee and the deans of the other campuses in an emergency situation (Emergency Notification). The decision to issue a timely warning or an emergency notification will be decided on a case-by-case basis in compliance with the Clery Act and after consideration of available facts.

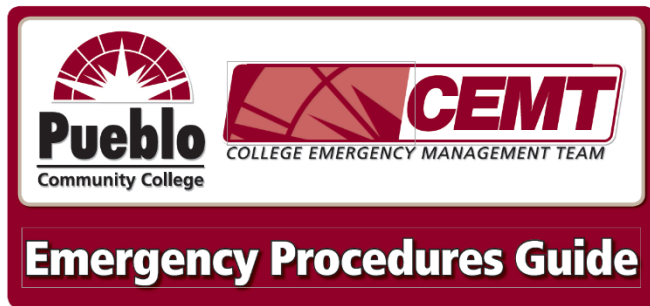
Because every campus/site has its own unique systems, each campus/site uses various forms of communication in order to send out emergency notifications, as indicated below. The dynamic and fluid nature of emergencies dictates that one or more, and not necessarily all of the methods, will be used.

All PCC campuses/sites, staff, students, and faculty, are notified by logging into the Portal, myPCC alerts. The Mass Emergency Notification system allows the college to send emergency messages to its entire community via e-mail, text (SMS), and/or voicemail to your cell and/home phones. Users, however, must subscribe and “opt in” to the service. Standard text messaging costs may apply.

All the campus/site locations have telephones (Zone Paging System) in the classroom, which allows the College to notify instructors and students in an emergency situation.

Emergency Operations Plan

PCC maintains an all-hazards Emergency Operations Plan that defines the College’s emergency organizational structure and outlines emergency procedures for staff, faculty, and students. This plan is made available to the College community on the [PCC website](#).



Emergency Response Guide(s)

Recognizing the high number of part-time employees, adjunct instructors, and turnover among students in our college community, each classroom, office, or work area is equipped with a “flip chart” style Emergency Procedure Guide (EPG). The EPG lists the most common types of emergencies and provides clear, bulleted, step-by-step guidance on what specific actions to take during any emergency.

Standard Response Protocol (SRP)

A critical part of emergency preparedness is having a plan and a system in place to execute it. Pueblo Community College has adopted the "Standard Responses Protocol" to assist students, staff and faculty in the event of an emergency. The protocol is based on four (4) instructions:



- **Lockout** is followed by the directive: "Secure the Perimeter" and is the protocol used to safeguard students and staff within a building.
- **Lockdown** is followed by "Locks, Lights, Out of Sight" is the protocol used to secure individual rooms and keep students quiet and in place.
- **Evacuate** is used to move students and staff from one location to a different location in or out of the building.
- **Shelter** is used when the need for personal protection is necessary such as weather related threats.

The SRP is posted in classrooms and offices throughout PCC campuses and available on the Staff and Student Portals, to include a SRP video. [Public Safety Website](#).

Security of and Access to Campus Facilities

As a public facility, our main campuses are open to visitors, students, faculty, and staff during normal operational hours and for special events. Access to facilities after hours or during periods when the college is closed is limited based on individual department needs and/or direction from college administration. Although the locking and unlocking of the campuses is completed through a cooperative effort between Facilities and Operations as well as the PCC Police Department access to the buildings after hours is routed through the PCC Police Department at 719.549.3355. During normal operational hours, instructors and employees who need access to classrooms or offices need to contact the PCC Police Department at 719.549.3355. Access to the other campuses may be obtained from the campus Deans:

Fremont Campus – 719.296.6108
PCC Southwest Campus and Sites – 970.564.6222

Security Considerations Used in the Maintenance of Campus Facilities

The College Emergency Management Team (CEMT) and the PCC Police Department work with all College offices to assess the safety needs of the office and classroom areas. As needs are identified, CEMT and PCC Police Department notify the particular College unit that can make the required repairs or additions. Members of the campus community are encouraged to report any maintenance concerns to Facility Services at 719.549.3345.

Drug, Alcohol, and Substance Abuse Policy Statements

In compliance with the Drug-Free Schools and Communities Act Amendment of 1989 (Public Law 101-226), students, staff, or faculty shall not engage in the unauthorized or unlawful manufacture, distribution, dispensation, possession, use/abuse of alcohol and/or illicit drugs on college property or as part of any college activity.

Any student, staff, or faculty who are convicted of the unlawful manufacture, distribution, dispensation, possession, use, or abuse of illicit drugs or alcohol is subject to criminal penalties under local, state, or federal law. These penalties range in severity from a fine of \$100 up to \$8,000,000 and/or life imprisonment. The exact penalty assessed depends upon the nature and the severity of the individual offense. The possession and/or consumption of alcohol by a minor is addressed in Appendix A, 18-13-122.

Additionally, to encourage students to seek medical assistance for themselves and/or others in the event of life threatening circumstances from alcohol and/or other drugs and in the spirit of the Colorado revised statute 18-13-122 (listed below), students may be eligible (in the student conduct process) for medical amnesty if they proactively call 911 and/or Public Safety for help. The primary PCC administrator responsible for student conduct concerns (or their designee) may grant medical amnesty for the reporting student and/or student impacted by life threatening circumstances (from alcohol and/or drugs) may not be subject to disciplinary sanctions but may have educational sanctions in the student conduct process.

The college will impose penalties against students who violate the Drug-Free Schools and Communities Act Amendments of 1989 (Public Law 101-226). Violators will be subject to disciplinary action under student disciplinary policies. The sanctions include but are not limited to probation, suspension, or expulsion from the college, termination of employment, and referral to authorities for prosecution, as appropriate. Found in the 2021-2022 [Student Handbook](#).

Violations of this policy may result in corrective or disciplinary action up to and including termination in accordance with Colorado Community College System Board Policy, System President Procedures, and/or State Personnel Rules. For additional information, please contact the Human Resource Office at 719.549.3220.

2020 Biennial Review

In order to fulfill compliance, the 2020 Biennial Review of PCCs alcohol and other drug related policies and programs for the 2018-19 and 2019-2020. The objectives of the review as identified by the U.S. Department of Education included:

- Determining the effectiveness of the College's AOD programs.
- Implementing needed changes to alcohol and other drug programs.
- Ensuring the disciplinary sanctions for violating standards of conduct are enforced consistently by all college employees and students.

The Office of the Vice President of Student Success, in cooperation with the Dean of Students Office, and the Chief of Police at PCC is required to provide a signed statement certifying the Biennial Review and acknowledging awareness of the recommendations within the report. The President of the College, the Vice President of Student Success, the Dean of Students, and the Chief of Police have signed and affirmed the 2020 report. Biennial Reports are maintained in the Chief Student Services Office located on the Pueblo Campus, Student Center, Room 261 and on the [Campus Safety website](#).

The Biennial Review Team will complete and publish the results of the statistical review and the College review, identifying the accomplishments (elements that demonstrated positive results) and recommendations for improvement (elements that need improvement or revision). The report also includes recommendations for any new elements that the College wishes to include in the DAAPP for the next two years.

Any area underlined is a hyperlink which will direct you to a website.

Drug and Alcohol Awareness and Prevention Program

Pueblo Community College conducted a survey of students during the fall 2014 semester and repeated the survey in fall 2016, 2018, 2020 and will repeat again in fall 2021, asking them about alcohol and drug prevalence on campus and the needs of students to address certain elements of alcohol and drug awareness and prevention. The survey results did not identify any specific needs or concerns beyond a general need for awareness and prevention. As a result of this survey, the Dean of Students Office and the PCC Health Clinic have designed a program to present awareness and prevention information and activities during the 2020-2021 year.

The College offered the following **primary prevention and awareness programs for all incoming students** in 2020-2021:

<u>Name of Program</u>	<u>Date Held</u>	<u>Location Held</u>	<u>Complied with Program Requirements</u>	<u>Which Prohibited Behavior Covered?*</u>
Campus-wide Marijuana statement	Annually – Spring, Summer, and Fall Semesters after census	Campus Policy	Educating and Awareness notification to all campus	Marijuana Usage on campus
Emails sent to all student staff and faculty.	Annually – Spring, Summer, and Fall Semesters after census	Campus Policy	Notification of where to find DAAPP	All drug and alcohol usage
AlcoholEdu Ongoing Prevention	September 2020 – July 2021	ONLINE (Web-based alcohol/other drug education/prevention training)	Awareness and Prevention Training for All Students	Alcohol, Marijuana, and prescription drug usage
Sexual Assault Prevention: Ongoing	September 2020 – July 2021	ONLINE (Web-based sexual violence prevention training)	Awareness and Prevention Training for All Students	National studies document the correlation between both areas of sexual misconduct and alcohol/drug use
Online New Student Orientation (NSO)	August 2020 November 2020 Summer 2021	ONLINE New Student Orientation	References the EVERFI AlcoholEdu Ongoing Prevention and Sexual Assault Prevention: Ongoing Online NSO also includes the link to the PCC Title IX webpage	PCC Title IX webpage

Any area underlined is a hyperlink which will direct you to a website.

The College offered the following **primary prevention and awareness programs for all new employees** in 2020-2021:

<u>Name of Program</u>	<u>Date Held</u>	<u>Location Held</u>	<u>Complied with Program Requirements</u>	<u>Which Prohibited Behavior Covered?*</u>
Drug and Alcohol policy explained in hiring process to all potential employees.	Date of hiring	Human Resources	Required notification and possible testing	The uses of drugs and alcohol

The College offered the following **ongoing awareness and prevention programs** for returning **students** in 2020-2021:

<u>Name of Program</u>	<u>Date Held</u>	<u>Location Held</u>	<u>Complied with Program Requirements</u>	<u>Which Prohibited Behavior Covered?</u>
Awareness of Alcohol	ALL YEAR	<ul style="list-style-type: none"> • Health & Wellness Fair • PCC Social Media posts • Resources included in printed campus FYI News <p>Large posters displayed in PCC Health Clinic common display area</p> <p>Non-academic related face-to-face events & programs were prohibited per PCC safety protocols during the COVID-19 pandemic</p>	Awareness and education opportunity	Alcohol use and abuse; treatment
Awareness of Marijuana	ALL YEAR	<p>Health & Wellness Fair</p> <p>Large posters displayed in PCC Health Clinic common display area</p> <p>Non-academic related face-to-face events & programs were</p>	Awareness and education opportunity	Marijuana use and abuse; treatment

Any area underlined is a hyperlink which will direct you to a website.

		prohibited per PCC safety protocols during the COVID-19 pandemic		
Awareness of heroin	ALL YEAR	<ul style="list-style-type: none"> Health & Wellness Fair <p>Large posters displayed in PCC Health Clinic common display area</p> <p>Non-academic related face-to-face events & programs were prohibited per PCC safety protocols during the COVID-19 pandemic</p>	Awareness and education opportunity	Heroin use and abuse; treatment
Awareness of Prescription Drugs	ALL YEAR	<ul style="list-style-type: none"> Health & Wellness Fair <p>Large posters displayed in PCC Health Clinic common display area</p> <p>Non-academic related face-to-face events & programs were prohibited per PCC safety protocols during the COVID-19 pandemic</p>	Awareness and education opportunity	Drug use and abuse; treatment
AlcoholEdu Ongoing Prevention	September 2020 – July 2021	<ul style="list-style-type: none"> ONLINE (Web-based alcohol/other drug education/prevention training) 	Awareness and Prevention Training for All Students	Alcohol, Marijuana, and prescription drug usage
Sexual Assault Prevention: Ongoing	September 2020 – July 2021	<ul style="list-style-type: none"> ONLINE (Web-based sexual violence prevention training) 	Awareness and Prevention Training for All Students	National studies document the correlation between both areas of sexual misconduct and alcohol/drug use
Online New Student Orientation (NSO) is open and accessible to returning students	August 2020 November 2020 Summer 2021	<ul style="list-style-type: none"> ONLINE New Student Orientation 	References the EVERFI AlcoholEdu Ongoing Prevention and Sexual Assault Prevention: Ongoing	PCC Title IX webpage

Any area underlined is a hyperlink which will direct you to a website.

Some returning students review this resource to “remind” themselves of available PCC resources			Online NSO also includes the link to the PCC Title IX webpage	
------------------------------------------------------------------------------------------------	--	--	-------------------------------------------------------------------------------	--

One need that the College already has identified relates to marijuana. Since the state of Colorado passed legislation legalizing the recreational use of marijuana, the College has found an increase in the number of students on campus who smell of marijuana (not a Student Code of Conduct violation) and who may be under the influence of marijuana (a Student Code of Conduct violation), though the number of incidents regarding the possession of marijuana (violation) have decreased. The College recognizes a need to increase student awareness of the potential dangers of marijuana usage and will develop an awareness program for all PCC students in 2020-2021.

During the 2020-2021 academic year, non-academic related face-to-face events and programs were prohibited per PCC safety protocols during the COVID-19 pandemic, however, PCC utilized emails, social media posts, posts in the campus FYI News, the PCC Health Clinic, EVERFI courses: AlcoholEdu (for Alcohol, Marijuana, and prescription drug usage) and Sexual Assault Prevention: Ongoing, etc. for primary and on-going prevention education.

Sex Offense Policy Statements

(Please see Appendix C for a complete listing of policies and procedures, including definitions and specific training and awareness programs that the College provided for its students and employees.)

PCC contracted with a company named EVERFI to offer online awareness and prevention training for all students, with an emphasis on dating violence, domestic violence, sexual assault, and stalking. Since PCC’s contract was up for renewal with EVERFI at the end of the 2018-2019 academic year, PCC conducted a thorough review of all course offerings that EVERFI provided on sexual assault prevention and also included a thorough review of other companies that provided online training on sexual assault prevention. Based on the analysis of all courses via EVERFI and through other companies, it was determined that the Sexual Assault Prevention: Ongoing course, fulfilled compliance expectations, would help encourage completion of the course due to the shortened length, and was not cost prohibitive. Additionally, the AlcoholEdu Ongoing Prevention (covering alcohol and other drugs education/prevention) was co-launched with the Sexual Assault Prevention: Ongoing course as there are national studies that document the correlation between both areas of sexual misconduct and alcohol/drug use. These courses were co-launched in the fall 2020 to all students and the spring 2021 semesters to all students that were new to PCC.

Because on staff vacancy from the 2019-2020 year that continued through the 2020-2021, the College was limited on what it could offer as ongoing awareness and training opportunities for students related to sexual violence. Additionally, PCC (and the world) was impacted by COVID-19 in the spring 2020 semester and the majority of the campus community quickly transitioned to remote learning/working; all student programming was halted at the direction of our College President.

During the 2020-2021 academic year, non-academic related face-to-face events and programs were prohibited per PCC safety protocols during the COVID-19 pandemic, however, PCC utilized emails, social media posts, posts in the campus FYI News, the PCC Health Clinic, EVERFI courses: AlcoholEdu (for Alcohol, Marijuana, and prescription drug usage) and Sexual Assault Prevention: Ongoing, etc. for prevention education

The College offered the following **primary prevention and awareness programs for incoming students** in 2020-2021:

<u>Name of Program</u>	<u>Date Held</u>	<u>Location Held</u>	<u>Complied with Program Requirements</u>	<u>Which Prohibited Behavior Covered?*</u>
Sexual Assault Prevention: Ongoing	September 2020 – July 2021	ONLINE (Web-based sexual violence prevention training)	Awareness and Prevention Training for All Students	Domestic Violence and Rape awareness. DoV, DaV, SA, S, & SH
AlcoholEdu Ongoing Prevention	September 2020 – July 2021	ONLINE (Web-based alcohol/other drug education/prevention training)	Awareness and Prevention Training for All Students	National studies document the correlation between both areas of sexual misconduct and alcohol/drug use
Online New Student Orientation (NSO) is open and accessible to returning students Some returning students review this resource to “remind” themselves of available PCC resources	August 2020 November 2020 Summer 2021	ONLINE New Student Orientation	References the EVERFI AlcoholEdu Ongoing Prevention and Sexual Assault Prevention: Ongoing Online NSO also includes the link to the PCC Title IX webpage	PCC Title IX webpage
PCC Social Media Posts & Inclusion in PCC FYI News	Throughout 2020 - 2021 September 2020 October 2020 January 2021 April 2021	Social Media Posts & Inclusion in PCC FYI News	Continued prevention educational opportunities and support for All Students	National Suicide Prevention Month Domestic Violence Awareness Month DoV, DaV, SA, S, & SH Human Trafficking Awareness Month SA, S, & SH Sexual Assault Awareness Month SA, S, & SH National Alcohol Awareness & Prevention Month

*DoV means Domestic Violence, DaV means Dating Violence, SA means Sexual Assault and S means Stalking, SH means Sexual Harassment

Any area underlined is a hyperlink which will direct you to a website.

The College offered the following **primary prevention and awareness programs for all new employees** in 2020-2021:

<u>Name of Program</u>	<u>Date Held</u>	<u>Location Held</u>	<u>Complied with Program Requirements</u>	<u>Which Prohibited Behavior Covered?*</u>
HR Training	Ongoing	Online Training that covers all VAWA Behaviors (online)	Prevention Awareness and Education	DoV, SA, S A, DVA

The College offered the following **ongoing awareness and prevention programs for students** in 2020-2021.

<u>Name of Program</u>	<u>Date Held</u>	<u>Location Held</u>	<u>Complied with Program Requirements</u>	<u>Which Prohibited Behavior Covered?*</u>
HR Employee Benefit Fair	Fall 2020	Pueblo Campus – Pueblo Rape Crisis Services attended	Awareness , Prevention, Resource Share	DoV, SA, DaV, SH
AlcoholEdu Ongoing Prevention	September 2020 – July 2021	ONLINE (Web-based alcohol/other drug education/ prevention training)	Awareness and Prevention Training for All Students	National studies document the correlation between both areas of sexual misconduct and alcohol/drug use
Sexual Assault Prevention: Ongoing	September 2020 – July 2021	ONLINE (Web-based sexual violence prevention training)	Awareness and Prevention Training for All Students	Domestic Violence and Rape awareness. DoV, DaV, SA, S, & SH
Online New Student Orientation (NSO) is open and accessible to returning students Some returning students review this resource to “remind” themselves of available PCC resources	August 2020 November 2020 Summer 2021	ONLINE New Student Orientation	References the EVERFI AlcoholEdu Ongoing Prevention and Sexual Assault Prevention: Ongoing Online NSO also includes the link to the PCC Title IX webpage	PCC Title IX webpage
PCC Social Media Posts & Inclusion in PCC FYI News	Throughout 2020 - 2021 September 2020 October 2020 January 2021 April 2021	Social Media Posts & Inclusion in PCC FYI News	Continued prevention educational opportunities and support for All Students	National Suicide Prevention Month Domestic Violence Awareness Month DoV, DaV, SA, S, & SH

Any area underlined is a hyperlink which will direct you to a website.

				Human Trafficking Awareness Month SA, S, & SH
				Sexual Assault Awareness Month SA, S, & SH
				National Alcohol Awareness & Prevention Month

*DoV means Domestic Violence, DaV means Dating Violence, SA means Sexual Assault and S means Stalking, SH means Sexual Harassment

Disclosure of Results of Disciplinary Proceedings Policy Statement

Pueblo Community College, upon the request of the alleged victim or if the alleged victim is deceased the next of kin of such victim shall be treated as the alleged victim and will disclose the results of disciplinary proceeding conducted by the College against a student who is the alleged perpetrator of any crime of violence or sex offense. Requests for this information are to be made to the office of the Vice President of Student Success or to the PCC Police Department.

Policy for Reporting the Annual Disclosure of Crime Statistics

The crime statistics listed in this document are for crimes reported within each calendar year (January 1 to December 31) and are obtained through a variety of sources. In addition to crimes reported to the PCC Police Department data was also solicited from the Pueblo County Sheriff’s Office and the Pueblo Police Department in an effort to collect crime data for the Pueblo Campus. Information was also solicited from the Cañon City Police Department for the Fremont Campus, the Durango Police Department for the PCC Southwest Site (Durango), the Bayfield Marshal’s Department for the PCC Southwest Site (Bayfield), and the Montezuma County Sheriff’s Office for the PCC Southwest Campus (Mancos). This data includes crimes that occurred on public properties around the campuses/sites as per the Clery Act Definitions (which can be found in Appendix C of this report), as well as any crimes to which they responded to on the campuses which were not previously report to the PCC Police Department.

Crime Statistics Information

REPORT OF CRIMINAL OFFENSES

Pueblo Campus

Offense (Includes attempts)	2018			2019			2020		
	On Campus	Non-Campus	Public Property	On Campus	Non-Campus	Public Property	On Campus	Non-Campus	Public Property
Murder and Non-Negligent Manslaughter	0	0	0	0	0	0	0	0	0
Negligent Manslaughter	0	0	0	0	0	0	0	0	0
Sex Offenses – Forcible	0	0	0	0	0	0	0	0	0
Rape	0	0	0	0	0	0	0	0	0
Fondling	0	0	0	1	0	0	0	0	0
Sex Offenses	0	0	0	0	0	0	0	0	0
Incest	0	0	0	0	0	0	0	0	0
Statutory Rape	0	0	0	0	0	0	0	0	0
Robbery	0	0	0	0	0	0	0	0	0
Aggravated Assault	0	0	0	0	0	0	0	0	0
Burglary	1	0	0	0	0	0	1	0	0
Motor Vehicle	3	0	1	1	0	0	0	0	0
Arson	0	0	0	0	0	0	0	0	0
VAWA									
Domestic Violence	1	0	0	1	0	0	0	0	0
Dating Violence	0	0	0	0	0	0	0	0	0
Stalking	0	0	0	0	0	0	0	0	0
Unfounded Crimes	0	0	0	0	0	0	0	0	0
Arrests Made									
Weapons: carrying, possessing, etc.	0	0	0	0	0	0	0	0	0
Drug Abuse Violations	0	0	0	0	0	0	0	0	0
Liquor Law Violations	0	0	0	0	0	0	0	0	0
Referrals for Student Disciplinary									
Weapons: carrying, possessing, etc.	0	0	0	0	0	0	0	0	0
Drug Abuse Violations	1	0	0	0	0	0	0	0	0
Liquor Law Violations	0	0	0	1	6	0	0	0	0
Hate Crimes									
Race	0	0	0	0	0	0	0	0	0
Religion	0	0	0	0	0	0	0	0	0
Sexual Orientation	0	0	0	0	0	0	0	0	0
Gender	0	0	0	0	0	0	0	0	0
Gender Identity	0	0	0	0	0	0	0	0	0
Ethnicity	0	0	0	0	0	0	0	0	0
National Origin	0	0	0	0	0	0	0	0	0
Disability	0	0	0	0	0	0	0	0	0

Any area underlined is a hyperlink which will direct you to a website.

- “Public Property” refers to all public property including thoroughfares, streets, sidewalks, and parking facilities that are within the campus or immediately adjacent to and accessible from the campus.
- “On Campus” refers to any building or property owned or controlled by an institution within the same reasonably contiguous geographic area and is used by the institution in direct support of, or in a manner related to, the institution’s educational purposes and that is frequently used by students and support personnel.
- “Non-Campus Property” any building or property owned or controlled by an institution that is used in direct support of, or in relation to, the institution’s educational purposes, is frequently used by students, and is not within the same reasonably contiguous geographic area of the institution. Non-campus property was added for 2015 to include PCC classes being held at St. Mary Corwin Hospital and the Downtown Studio Campus.
- Pueblo Community College does not own or operate any campus housing.
- Data on Referrals for Student Disciplinary Action are obtained through a coordinated effort with the PCC Police Department and the Vice President of Student Success.
- PCC started the covid-19 pandemic and went to complete remote learning starting March 2020 until the summer 2020. In addition, the spring 2020 safety protocols, all non-academic related face-to-face programming was prohibited (due to PCC’s safety pandemic protocols) starting March 2020 and continuing through all of the 2020 – 2021 academic year.

REPORT OF CRIMINAL OFFENSES
Fremont Campus

Offense (Includes attempts)	2018			2019			2020		
	On Campus	Non-Campus	Public Property	On Campus	Non-Campus	Public Property	On Campus	Non-Campus	Public Property
Murder and Non-Negligent Manslaughter	0	0	0	0	0	0	0	0	0
Negligent Manslaughter	0	0	0	0	0	0	0	0	0
Sex Offenses – Forcible	0	0	0	0	0	0	0	0	0
Rape	0	0	0	0	0	0	0	0	0
Fondling	0	0	0	0	0	0	0	0	0
Sex Offenses	0	0	0	0	0	0	0	0	0
Incest	0	0	0	0	0	0	0	0	0
Statutory Rape	0	0	0	0	0	0	0	0	0
Robbery	0	0	0	0	0	0	0	0	0
Aggravated Assault	0	0	0	0	0	0	0	0	0
Burglary	0	0	0	0	0	0	0	0	0
Motor Vehicle	0	0	0	0	0	0	0	0	0
Arson	0	0	0	0	0	0	0	0	0
VAWA									
Domestic Violence	0	0	0	0	0	0	0	0	0
Dating Violence	0	0	0	0	0	0	0	0	0
Stalking	0	0	0	0	0	0	0	0	0
Unfounded Crimes	0	0	0	0	0	0	0	0	0
Arrests Made									
Weapons: carrying, possessing, etc.	0	0	0	0	0	0	0	0	0
Drug Abuse Violations	0	0	0	0	0	0	0	0	0
Liquor Law Violations	0	0	0	0	0	0	0	0	0
Referrals for Student Disciplinary									
Weapons: carrying, possessing, etc.	0	0	0	0	0	0	0	0	0
Drug Abuse Violations	0	0	0	0	0	0	0	0	0
Liquor Law Violations	0	0	0	0	0	0	0	0	0
Hate Crimes									
Race	0	0	0	0	0	0	0	0	0

Any area underlined is a hyperlink which will direct you to a website.

Offense (Includes attempts)	2018			2019			2020		
Religion	0	0	0	0	0	0	0	0	0
Sexual Orientation	0	0	0	0	0	0	0	0	0
Gender	0	0	0	0	0	0	0	0	0
Gender Identity	0	0	0	0	0	0	0	0	0
Ethnicity	0	0	0	0	0	0	0	0	0
National Origin	0	0	0	0	0	0	0	0	0
Disability	0	0	0	0	0	0	0	0	0

- “Public Property” refers to all public property including thoroughfares, streets, sidewalks, and parking facilities that are within the campus or immediately adjacent to and accessible from the campus.
- “On Campus” refers to any building or property owned or controlled by an institution within the same reasonably contiguous geographic area and is used by the institution in direct support of, or in a manner related to, the institution’s educational purposes and that is frequently used by students and support personnel.
- Pueblo Community College does not own or operate any campus housing.
- Pueblo Community College does not have any non-campus properties as part of the Fremont Campus.
- Data on Referrals for Student Disciplinary Action are obtained through a coordinated effort with the PCC Police Department and the Vice President of Student Success.
- PCC started the covid-19 pandemic and went to complete remote learning starting March 2020 until the summer 2020. In addition, the spring 2020 safety protocols, all non-academic related face-to-face programming was prohibited (due to PCC’s safety pandemic protocols) starting March 2020 and continuing through all of the 2020 – 2021 academic year.

Any area underlined is a hyperlink which will direct you to a website.

REPORT OF CRIMINAL OFFENSES
PCC Southwest Site (Durango)

Offense (Includes attempts)	2018			2019			2020		
	On Campus	Non- Campus	Public Property	On Campus	Non- Campus	Public Property	On Campus	Non- Campus	Public Property
Murder and Non- Negligent Manslaughter	0	0	0	0	0	0	0	0	0
Negligent Manslaughter	0	0	0	0	0	0	0	0	0
Sex Offenses – Forcible	0	0	0	0	0	0	0	0	0
Rape	0	0	0	0	0	0	0	0	0
Fondling	0	0	0	0	0	0	0	0	0
Sex Offenses	0	0	0	0	0	0	0	0	0
Incest	0	0	0	0	0	0	0	0	0
Statutory Rape	0	0	0	0	0	0	0	0	0
Robbery	0	0	0	0	0	0	0	0	0
Aggravated Assault	0	0	0	0	0	0	0	0	0
Burglary	0	0	0	0	0	0	0	0	0
Motor Vehicle	1	0	0	0	0	0	0	0	0
Arson	0	0	0	0	0	0	0	0	0
VAWA									
Domestic Violence	0	0	0	0	0	0	0	0	0
Dating Violence	0	0	0	0	0	0	0	0	0
Stalking	0	0	0	0	0	0	0	0	0
Unfounded Crimes	0	0	0	0	0	0	0	0	0
Arrests Made									
Weapons: carrying, possessing, etc.	0	0	0	0	0	0	0	0	0
Drug Abuse Violations	0	0	0	0	0	0	0	0	0
Liquor Law Violations	0	0	0	0	0	0	0	0	0
Referrals for Student Disciplinary									
Weapons: carrying, possessing, etc.	0	0	0	0	0	0	0	0	0

Any areas underlined is a hyperlink which will direct you to a website.

Offense (Includes attempts)	2018			2019			2020		
Drug Abuse Violations	0	0	0	0	0	0	0	0	0
Liquor Law Violations	0	0	0	0	0	0	0	0	0
Hate Crimes									
Race	0	0	0	0	0	0	0	0	0
Religion	0	0	0	0	0	0	0	0	0
Sexual Orientation	0	0	0	0	0	0	0	0	0
Gender	0	0	0	0	0	0	0	0	0
Gender Identity	0	0	0	0	0	0	0	0	0
Ethnicity	0	0	0	0	0	0	0	0	0
National Origin	0	0	0	0	0	0	0	0	0
Disability	0	0	0	0	0	0	0	0	0

- “Public Property” refers to all public property including thoroughfares, streets, sidewalks, and parking facilities that are within the campus or immediately adjacent to and accessible from the campus.
- “On Campus” refers to any building or property owned or controlled by an institution within the same reasonably contiguous geographic area and is used by the institution in direct support of, or in a manner related to, the institution’s educational purposes and that is frequently used by students and support personnel.
- Pueblo Community College does not own or operate any campus housing.
- Pueblo Community College does not have any non-campus properties as part of the PCC Southwest Site.
- Data on Referrals for Student Disciplinary Action are obtained through a coordinated effort with the PCC Police Department and the Vice President of Student Success.
- PCC started the covid-19 pandemic and went to complete remote learning starting March 2020 until the summer 2020. In addition, the spring 2020 safety protocols, all non-academic related face-to-face programming was prohibited (due to PCC’s safety pandemic protocols) starting March 2020 and continuing through all of the 2020 – 2021 academic year.

Any areas underlined is a hyperlink which will direct you to a website.

REPORT OF CRIMINAL OFFENSES
PCC Southwest Site (Bayfield)

Offense (Includes attempts)	2019			2020			0000		
	On Campus	Non-Campus	Public Property	On Campus	Non-Campus	Public Property	On Campus	Non-Campus	Public Property
Murder and Non-Negligent Manslaughter	0	0	0	0	0	0	-	-	-
Negligent Manslaughter	0	0	0	0	0	0	-	-	-
Sex Offenses – Forcible	0	0	0	0	0	0	-	-	-
Rape	0	0	0	0	0	0	-	-	-
Fondling	0	0	0	0	0	0	-	-	-
Sex Offenses	0	0	0	0	0	0	-	-	-
Incest	0	0	0	0	0	0	-	-	-
Statutory Rape	0	0	0	0	0	0	-	-	-
Robbery	0	0	0	0	0	0	-	-	-
Aggravated Assault	0	0	0	0	0	0	-	-	-
Burglary	0	0	0	0	0	0	-	-	-
Motor Vehicle	0	0	0	0	0	0	-	-	-
Arson	0	0	0	0	0	0	-	-	-
VAWA							-	-	-
Domestic Violence	0	0	0	0	0	0	-	-	-
Dating Violence	0	0	0	0	0	0	-	-	-
Stalking	0	0	0	0	0	0	-	-	-
Unfounded Crimes	0	0	0	0	0	0	-	-	-
Arrests Made									
Weapons: carrying, possessing, etc.	0	0	0	0	0	0	-	-	-
Drug Abuse Violations	0	0	0	0	0	0	-	-	-
Liquor Law Violations	0	0	0	0	0	0	-	-	-
Referrals for Student Disciplinary									
Weapons: carrying, possessing, etc.	0	0	0	0	0	0	-	-	-

Any areas underlined is a hyperlink which will direct you to a website.

Offense (Includes attempts)	2019			2020			0000		
Drug Abuse Violations	0	0	0	0	0	0	-	-	-
Liquor Law Violations	0	0	0	0	0	0	-	-	-
Hate Crimes									
Race	0	0	0	0	0	0	-	-	-
Religion	0	0	0	0	0	0	-	-	-
Sexual Orientation	0	0	0	0	0	0	-	-	-
Gender	0	0	0	0	0	0	-	-	-
Gender Identity	0	0	0	0	0	0	-	-	-
Ethnicity	0	0	0	0	0	0	-	-	-
National Origin	0	0	0	0	0	0	-	-	-
Disability	0	0	0	0	0	0	-	-	-

- “Public Property” refers to all public property including thoroughfares, streets, sidewalks, and parking facilities that are within the campus or immediately adjacent to and accessible from the campus.
- “On Campus” refers to any building or property owned or controlled by an institution within the same reasonably contiguous geographic area and is used by the institution in direct support of, or in a manner related to, the institution’s educational purposes and that is frequently used by students and support personnel.
- Pueblo Community College does not own or operate any campus housing.
- Pueblo Community College does not have any non-campus properties as part of the PCC Southwest Site.
- Data on Referrals for Student Disciplinary Action are obtained through a coordinated effort with the PCC Police Department and the Vice President of Student success.
- PCC started the covid-19 pandemic and went to complete remote learning starting March 2020 until the summer 2020. In addition, the spring 2020 safety protocols, all non-academic related face-to-face programming was prohibited (due to PCC’s safety pandemic protocols) starting March 2020 and continuing through all of the 2020 – 2021 academic year.

Any areas underlined is a hyperlink which will direct you to a website.

REPORT OF CRIMINAL OFFENSES
PCC Southwest Campus (Mancos)

Offense (Includes attempts)	2018			2019			2020		
	On Campus	Non- Campus	Public Property	On Campus	Non- Campus	Public Property	On Campus	Non- Campus	Public Property
Murder and Non- Negligent Manslaughter	0	0	0	0	0	0	0	0	0
Negligent Manslaughter	0	0	0	0	0	0	0	0	0
Sex Offenses – Forcible	0	0	0	0	0	0	0	0	0
Rape	0	0	0	0	0	0	0	0	0
Fondling	0	0	0	0	0	0	0	0	0
Sex Offenses	0	0	0	0	0	0	0	0	0
Incest	0	0	0	0	0	0	0	0	0
Statutory Rape	0	0	0	0	0	0	0	0	0
Robbery	0	0	0	0	0	0	0	0	0
Aggravated Assault	0	0	0	0	0	0	0	0	0
Burglary	0	0	0	0	0	0	0	0	0
Motor Vehicle	0	0	0	0	0	0	0	0	0
Arson	0	0	0	0	0	0	0	0	0
VAWA									
Domestic Violence	0	0	0	0	0	0	0	0	0
Dating Violence	0	0	0	0	0	0	0	0	0
Stalking	0	0	0	0	0	0	0	0	0
Unfounded Crimes	0	0	0	0	0	0	0	0	0
Arrests Made									
Weapons: carrying, possessing, etc.	0	0	0	0	0	0	0	0	0
Drug Abuse Violations	0	0	0	0	0	0	0	0	0
Liquor Law Violations	0	0	0	0	0	0	0	0	0
Referrals for Student Disciplinary									
Weapons: carrying, possessing, etc.	0	0	0	0	0	0	0	0	0

Any areas underlined is a hyperlink which will direct you to a website.

Offense (Includes attempts)	2018			2019			2020		
Drug Abuse Violations	0	0	0	0	0	0	0	0	0
Liquor Law Violations	0	0	0	0	0	0	0	0	0
Hate Crimes								0	
Race	0	0	0	0	0	0	0	0	0
Religion	0	0	0	0	0	0	0	0	0
Sexual Orientation	0	0	0	0	0	0	0	0	0
Gender	0	0	0	0	0	0	0	0	0
Gender Identity	0	0	0	0	0	0	0	0	0
Ethnicity	0	0	0	0	0	0	0	0	0
National Origin	0	0	0	0	0	0	0	0	0
Disability	0	0	0	0	0	0	0	0	0

- “Public Property” refers to all public property including thoroughfares, streets, sidewalks, and parking facilities that are within the campus or immediately adjacent to and accessible from the campus.
- “On Campus” refers to any building or property owned or controlled by an institution within the same reasonably contiguous geographic area and is used by the institution in direct support of, or in a manner related to, the institution’s educational purposes and that is frequently used by students and support personnel.
- Pueblo Community College does not own or operate any campus housing.
- Pueblo Community College does not have any non-campus properties as part of the PCC Southwest Campus.
- Data on Referrals for Student Disciplinary Action are obtained through a coordinated effort with the PCC Police Department and Vice President of Student Success.
- PCC started the covid-19 pandemic and went to complete remote learning starting March 2020 until the summer 2020. In addition, the spring 2020 safety protocols, all non-academic related face-to-face programming was prohibited (due to PCC’s safety pandemic protocols) starting March 2020 and continuing through all of the 2020 – 2021 academic year.

Any areas underlined is a hyperlink which will direct you to a website.

Fire Safety Report & Missing Student Notification

The Clery Act requires institutions to mandatorily report policies, procedures, and any statistical data related to fire incidents and missing students occurring on or off campus student housing under the jurisdiction of the College.

Pueblo Community College does not own nor has any on or off campus student housing at any of its campuses/sites and therefore, is not mandated to fulfill these requirements.

APPENDIX A

Colorado Revised Statutes related to this document:

18-8-115. Duty to report a crime - liability for disclosure.

It is the duty of every corporation or person who has reasonable grounds to believe that a crime has been committed to report promptly the suspected crime to law enforcement authorities. Notwithstanding any other provision of the law to the contrary, a corporation or person may disclose information concerning a suspected crime to other persons or corporations for the purpose of giving notice of the possibility that other such criminal conduct may be attempted which may affect the persons or corporations notified. When acting in good faith, such corporation or person shall be immune from any civil liability for such reporting or disclosure. This duty shall exist notwithstanding any other provision of the law to the contrary; except that this section shall not require disclosure of any communication privileged by law.

18-12-214. Authority granted by permit – carrying restrictions.

(1)(a) A permit to carry a concealed handgun authorizes the permittee to carry a concealed handgun in all areas of the state, except as specifically limited in this section. A permit does not authorize the permittee to use a handgun in a manner that would violate a provision of state law. A local government does not have authority to adopt or enforce an ordinance or resolution that would conflict with any provision of this part 2.

(b) A peace officer may temporarily disarm a permittee, incident to a lawful stop of the permittee. The peace officer shall return the handgun to the permittee prior to discharging the permittee from the scene.

(2) A permit issued pursuant to this part 2 does not authorize a person to carry a concealed handgun into a place where the carrying of firearms is prohibited by federal law.

(3) A permit issued pursuant to this part 2 does not authorize a person to carry a concealed handgun onto the real property, or into any improvements erected thereon, of a public elementary, middle, junior high, or high school; except that:

(a) A permittee may have a handgun on the real property of the public school so long as the handgun remains in his or her vehicle and, if the permittee is not in the vehicle, the handgun is in a compartment within the vehicle and the vehicle is locked;

(b) A permittee who is employed or retained by contract by a school district or charter school as a school security officer may carry a concealed handgun onto the real property, or into any improvement erected thereon, of a public elementary, middle, junior high, or high school while the permittee is on duty;

(c) A permittee may carry a concealed handgun on undeveloped real property owned by a school district that is used for hunting or other shooting sports.

(4) A permit issued pursuant to this part 2 does not authorize a person to carry a concealed handgun into a public building at which:

(a) Security personnel and electronic weapons screening devices are permanently in place at each entrance to the building;

(b) Security personnel electronically screen each person who enters the building to determine whether the person is carrying a weapon of any kind; and

(c) Security personnel require each person who is carrying a weapon of any kind to leave the weapon in possession of security personnel while the person is in the building.

(5) Nothing in this part 2 shall be construed to limit, restrict, or prohibit in any manner the existing rights of a private property owner, private tenant, private employer, or private business entity.

(6) The provisions of this section apply to temporary emergency permits issued pursuant to section 18-12-209

18-13-122. Illegal possession or consumption of ethyl alcohol by an underage person - adolescent substance abuse prevention and treatment fund - legislative declaration.

(1) As used in this section, unless the context otherwise requires:

(a) "Establishment" means a business, firm, enterprise, service or fraternal organization, club, institution, entity, group, or residence, and any real property, including buildings and improvements, connected therewith, and shall also include any members, employees, and occupants associated therewith.

(b) "Ethyl alcohol" means any substance which is or contains ethyl alcohol.

(c) "Possession of ethyl alcohol" means that a person has or holds any amount of ethyl alcohol anywhere on his person, or that a person owns or has custody of ethyl alcohol, or has ethyl alcohol within his immediate presence and control.

(d) "Private property" means any dwelling and its curtilage which is being used by a natural person or natural persons for habitation and which is not open to the public and privately owned real property which is not open to the public. "Private property" shall not include:

(I) Any establishment which has or is required to have a license pursuant to article 46, 47, or 48 of title 12, C.R.S.; or

(II) Any establishment which sells ethyl alcohol or upon which ethyl alcohol is sold;

OR

(III) Any establishment which leases, rents, or provides accommodations to members of the public generally.

(2) Any person under twenty-one years of age who possesses or consumes ethyl alcohol anywhere in the state of Colorado commits illegal possession or consumption of ethyl alcohol by an underage person.

Illegal possession or consumption of ethyl alcohol by an underage person is a strict liability offense.

(I) Upon conviction of a first offense, illegal possession or consumption of ethyl alcohol by an underage person shall be punished by a fine of not more than two hundred fifty dollars. The court, upon sentencing a defendant pursuant to this paragraph (b), may, in addition to any fine, order that the defendant perform up to twenty-four hours of useful public service, subject to the conditions and restrictions of section 18-1.3-507, and may further order that the defendant submit to and complete an alcohol evaluation or assessment, an alcohol education program, or an alcohol treatment program at such defendant's own expense.

(II) Upon conviction of a second offense, illegal possession or consumption of ethyl alcohol by an underage person shall be punished by a fine of not more than five hundred dollars, and the court shall order the defendant to submit to and complete an alcohol evaluation or assessment, an alcohol education program, or an alcohol treatment program, at the defendant's own expense. The court may further order the defendant to perform up to twenty-four hours of useful public service, subject to the conditions and restrictions specified in section 18-1.3-507.

(III) Upon conviction of a third or subsequent offense, illegal possession or consumption of ethyl alcohol by an underage person shall be a class 2 misdemeanor, and the court, in addition to sentencing the defendant pursuant to the provisions of section 18-1.3-501, shall order the defendant to submit to and complete an alcohol evaluation or assessment, an alcohol education program, or an alcohol treatment program, at the defendant's own expense.

(IV) A person convicted of a violation of this section is subject to an additional penalty surcharge of twenty-five dollars that shall be administered to the adolescent substance abuse prevention and treatment fund.

(3) It shall be an affirmative defense to the offense described in subsection (2) of this section that the ethyl alcohol was possessed or consumed by a person less than twenty-one years of age under the following circumstances:

(a) While such person was legally upon private property with the knowledge and consent of the owner or legal possessor of such private property and the ethyl alcohol was possessed or consumed with the consent of his parent or legal guardian who was present during such possession or consumption; or

(b) When the existence of ethyl alcohol in a person's body was due solely to the ingestion of a confectionery which contained ethyl alcohol within the limits prescribed by section 25-5-410 (1) (i) (II), C.R.S.; or the ingestion of any substance which was manufactured, designed, or intended primarily for a purpose other than oral human ingestion; or the ingestion of any substance which was manufactured, designed, or intended solely for medicinal or hygienic purposes; or solely from the ingestion of a beverage which contained less than one-half of one percent of ethyl alcohol by weight.

(c) The person is a student who:

(I) Tastes but does not imbibe an alcohol beverage only while under the direct supervision of an instructor who is at least twenty-one years of age and employed by a post-secondary school;

(II) Is enrolled in a university or a post-secondary school accredited or certified by an agency recognized by the United States department of education, a nationally recognized accrediting agency or association, or the "Private Occupational Education Act of 1981", article 59 of title 12, C.R.S.;

(III) Is participating in a culinary arts, food service, or restaurant management degree program; and (IV) Tastes but does not imbibe the alcohol beverage for instructional purposes as a part of a required course in which the alcohol beverage, except the portion the student tastes, remains under the control of the instructor.

(4) The possession or consumption of ethyl alcohol shall not constitute a violation of this section if such possession or consumption takes place for religious purposes protected by the first amendment to the United States constitution.

An underage person and one or two other persons shall be immune from criminal prosecution under this section if they establish the following:

(a) One of the underage persons called 911 and reported that another underage person was in need of medical assistance due to alcohol consumption;

(b) The underage person who called 911 and, if applicable, one or two other persons acting in concert with the underage person who called 911 provided each of their names to the 911 operator;

(c) The underage person was the first person to make the 911 report; and

(d) The underage person and, if applicable, one or two other persons acting in concert with the underage person who made the 911 call remained on the scene with the underage person in need of medical assistance until assistance arrived and cooperated with medical assistance and law enforcement personnel on the scene.

(5) Prima facie evidence of a violation of subsection (2) of this section shall consist of:

(a) Evidence that the defendant was under the age of twenty-one years and possessed or consumed ethyl alcohol anywhere in this state; or

(b) Evidence that the defendant was under the age of twenty-one years and manifested any of the characteristics commonly associated with ethyl alcohol-intoxication or impairment while present anywhere in this state.

Colorado revised statute 18-13-122:

- (7) (a)** An underage person is immune from arrest and prosecution under this section if he or she establishes the following:
- (I)** The underage person called 911 and reported in good faith that another underage person was in need of medical assistance due to alcohol or marijuana consumption;
 - (II)** The underage person who called 911 provided his or her name to the 911 operator;
 - (III)** The underage person was the first person to make the 911 report; and
 - (IV)** The underage person who made the 911 call remained on the scene with the underage person in need of medical assistance until assistance arrived and cooperated with medical assistance or law enforcement personnel on the scene.
- (b)** The immunity described in paragraph (a) of this subsection (7) also extends to the underage person who was in need of medical assistance due to alcohol or marijuana consumption if the conditions of said paragraph (a) are satisfied.

Additionally, to encourage students to seek medical assistance for themselves and/or others in the event of life threatening circumstances from alcohol and/or other drugs and in the spirit of the Colorado revised statute 18-13-122 (listed above), students may be eligible (in the student conduct process) for medical amnesty if they proactively call 911 and/or Public Safety for help. The primary PCC administrator responsible for student conduct concerns (or their designee) may grant medical amnesty for the reporting student and/or student impacted by life threatening circumstances (from alcohol and/or drugs) may not be subject to disciplinary sanctions but may have educational sanctions in the student conduct process.

APPENDIX B

Victim Assistance and Drug/Alcohol Referral Programs and Resources:

Pueblo Campus:

- Addict2Athlete – 2101 E. Evans Avenue, Pueblo, CO 81004 – 719.250.7805
- Suicide Prevention – Teen Hot Line – 1.800.273.8255
- *Crisis Text Line – Text START to 741.741 24 hours
- Catholic Charities Family Counseling Center: 719.544.4233
- CO Anti-Violence Program (LGBT): 1.888.557.4441 (May have to leave a message)
- [Community Care](#): 719.314.2560
- Child Abuse/Neglect Reporting: 719.583.6901
- YWCA- Adult & Child Domestic Violence Counseling 719.545.8195
- [Pueblo Rape Crisis Services](#): 719.549.0549
- Posada: 719.545.8776
- Alano Club (support& referral) - 320 Clark Street, Pueblo, CO 81003 – 719.542.6347
- Alcoholic Anonymous - 4035 Club Manor Drive, Suite A, Pueblo, CO 81008 – 719.546.1173
- Crossroads Turning Point - 509 E. 13th Street, Pueblo, CO 81001 – 719.546.6666; Special Women's Services - 3500 Baltimore, Pueblo, CO 81008 – 719.545.1181; Alcoholism Treatment Program – 1711 E. Evans Avenue, Pueblo, CO 81004 – 719.924.9511
- Parkview-Chemical Dependency Program - 58 Club Manor Drive, Pueblo, CO 81008 – 719.584.4343
- Parkview Adolescent Substance Abuse Program - 56 Club Manor Drive, Suite 104, Pueblo, CO 81008 – 719.584.4457
- HIV/AIDS Hotline: 1.800.CDC.INFO (1.800.232.4636)
- [Health Solutions](#) – 719.545.2746
- Pueblo City/County Health Department: 719.583.4300
- Teen Crisis Line-runaway hotline-Covenant House “9” Line: 1.800.999.9999
- [The National Suicide Prevention Lifeline](#): 1.800.273.8255
- [National Organization for Victim Assistance](#): 1.800.879.6682
- Safe2Tell: 1.877.542.SAFE (1.877.542.7233)
- [TESSA](#) crisis line - 719-633-3819
- [Pueblo Community College Title IX Resources](#)
- [Pueblo Community College Campus Police](#)
- [Colorado Crisis Services](#)
- Pueblo Community Health Center:
 - On Campus: MT 118 – 719.549.3315
 - Main Clinic: 110 East Routt Avenue, Pueblo, CO 81004: 719.543.8711

Fremont Campus:

- Alcoholics Anonymous – 719.275.7089
- Family Crisis Services, Inc. - 3228 Independence Road, Cañon City, CO 81212 – 719.275.2429
- Rocky Mountain Behavioral Health - 3239 Independence Road, Cañon City, CO 81212 – 719.275.7650
- Solvista Health; Canon City call 719.275.2351; Westcliffe call 719.783.9064
- [Pueblo Community College Title IX Resources](#)

Any area underlined is a hyperlink which will direct you to a website.

- [Pueblo Community College Campus Police](#)
- [Colorado Crisis Services](#)

Mancos Campus, Bayfield and Durango Sites:

- Al-Anon and Al-Ateen Family Groups SW Groups – 970.259.2982
- Alcohol & Drug Treatment Referral – 800.454.8966
- Alternative Horizons, Durango, CO – 970.247.9619
- Axis Health System (formerly Southwest Colorado Mental Health Center, Inc.)
 - Axis Crises Line – 970.247.5245
 - Cortez, CO – 970.565.7946
 - Durango, CO – 970.259.2162
 - Pagosa Springs, CO – 970.264.2104
 - Emergency Suicide Prevention – 970.247.5245
 - Crossroads – Emergencies, Durango, CO – 970.403.0180
- Colorado Crisis Services Support Line - 844.493.8255
- Detox of La Plata County, Durango, CO – 970.259.8732
- NEST Child Advocacy Center – 970.565.8155
- Preferred Counseling Services, Durango, CO – 970.739.8970 or 970.259.3952
- Recovery Center – CARS, Cortez, CO – 970.565.4109
- Second Wind Fund – 720.962.0706. This is not a crisis hotline but the fund is available to youths who face social or financial barriers to crisis counseling. The organization requires a referral by a school counselor or mental health professional.
- Sexual Assault Services Organization (SASO hotline) Durango, Ignacio – 970.247.5400
- Southern Colorado Community Action Agency, Inc., Ignacio, CO – 970.563.4517
- Southern Ute Health Center, Ignacio, CO – 970.563.4851 (Serving ALL Indian tribes w/proof of documentation)
- Trevor Project – 866.488.7386. Crisis intervention and suicide prevention for LGBTQ youth via online chat, text, or phone
- Ute Mountain Ute Tribe – 970.565.3751
- [Pueblo Community College Title IX Resources](#)
- [Pueblo Community College Campus Police](#)
- [Colorado Crisis Services](#)

Other resources available to persons who report being the victim of sexual assault, domestic violence, dating violence, or stalking, and those who are in need of addiction assistance or suicide prevention resources, include:

- [Addiction Care and Education](#)
- [Addiction Health Today](#)
- [Addiction Treatment Resources](#)
- [Alcohol Addiction](#)
- [Bullying Awareness & Prevention](#)
- [Choosing the Best Inpatient Addiction and Domestic Violence or Sexual Abuse Recovery Center](#)
- [Colorado Anti-Violence Program, Building Safety and Justice for LGBTQ Communities](#)
- [Colorado Coalition Against Domestic Violence](#)
- [Colorado Coalition Against Sexual Assault](#)
- [Detox Centers and Drug Rehab](#)
- [Domestic Violence and Substance Abuse](#)
- [Drug Addiction Help](#)

Any area underlined is a hyperlink which will direct you to a website.

- [DrugRehabs.Net](#)
- [Guidebook to Addiction on College Campuses](#)
- [Local Addiction Resources](#)
- [Rape, Abuse and Incest National Network](#)
- [RehabSpot](#)
- [Start Your Recovery](#)
- [Staying Safe on Campus](#)
- [Student Suicide & Depression Awareness Guide](#)
- [Suicide Prevention Guide](#)
- [Suicide Prevention Help and Resources](#)
- [The Recovery Village](#)
- [Violence Awareness & Prevention](#)

Important PCC Public Safety Internet Links

- [Pueblo Community College](#)
- The [PCC Police Department](#)
- The [Daily Crime Log](#)
- The [Crime Statistics](#)
- [Safety Tips](#)

APPENDIX C

Policy Statement for Annual Security Report – Jeanne Clery Disclosure of Campus Security Policy and Campus Crime Statistics Act, as Amended by the Violence Against Women Reauthorization Act of 2013.

Pueblo Community College does not discriminate on the basis of sex in its educational programs and sexual harassment and sexual violence are types of sex discrimination. Other acts can also be forms of sex-based discrimination and are also prohibited whether sexually based or not and include dating violence, domestic violence, and stalking. As a result, Pueblo Community College issues this statement of policy to inform the community of our comprehensive plan addressing sexual misconduct, educational programs, and procedures that address sexual assault, domestic violence, dating violence, and stalking, whether the incident occurs on or off campus and when it is reported to a College official. In this context, Pueblo Community College prohibits the offenses of domestic violence, dating violence, sexual assault and stalking and reaffirms its commitment to maintain a campus environment emphasizing the dignity and worth of all members of the College community.

Pueblo Community College is a part of the Colorado Community College System (CCCS) and is governed by the State Board for Community Colleges and Occupational Education (SBCCOE). For a complete copy of the [SBCCOE Board Policies](#) (BP) governing sexual misconduct. [BP 3-120](#), Affirmative Action/Anti-Discrimination, prohibits employee sexual misconduct and [SP-19-60](#), Prohibition of Discrimination or Harassment, prohibits student sexual misconduct.

Additionally, the Board has delegated procedural authority to the Colorado Community College System President and as a result, the pertinent information can be found at [CCCS System President's Procedures \(SP\) on Sexual Misconduct](#). [SP 19-60](#) applies to CCCS employees, authorized volunteers, guests, and visitors. For students, [SP 19-60](#) applies.

All Sexual Misconduct complaints are investigated pursuant to System President's Procedures, Civil Rights Grievance and Investigation Process. If the respondent to a complaint is a CCCS employee, authorized volunteer(s), guest(s), or visitor(s), [SP 19-60](#) will apply. If the respondent is a student, [SP 19-60](#) applies.

A. Definitions

Consent, Unlawful Sexual Behavior-Colorado Revised Statutes (C.R.S.) 18-3-401, means cooperation in act or attitude pursuant to an exercise of free will and with knowledge of the nature of the act. A current or previous relationship shall not be sufficient to constitute consent. Submission under the influence of fear shall not constitute consent.

Sexual Assault-C.R.S. 18-3-402, Colorado law defines sexual assault as any actor who knowingly inflicts sexual penetration on a victim commits sexual assault if:

- The actor causes submission of the victim by means of sufficient consequence reasonably calculated to cause submission against the victim's will; or
- The actor knows that the victim is incapable of appraising the nature of the victim's conduct; or
- The actor knows that the victim submits erroneously, believing the actor to be the victim's spouse; or
- At the time of the commission of the act, the victim is less than fifteen years of age and the actor is at least four years older than the victim and is not the spouse of the victim; or
- At the time of the commission of the act, the victim is at least fifteen years of age but less than seventeen years of age and the actor is at least ten years older than the victim and is not the spouse of the victim; or
- The victim is in custody of law or detained in a hospital or other institution and the actor has supervisory or disciplinary authority over the victim and uses this position of authority to coerce the victim to submit, unless the act is incident to a lawful search; or
- The actor, while purporting to offer a medical service, engages in treatment or examination of a victim for other than a bona fide medical purpose or in a manner substantially inconsistent with reasonable medical practices; or
- The victim is physically helpless and the actor knows the victim is physically helpless and the victim has not consented.

Sexual Assault on a Child-C.R.S. 18-3-405, means any actor who knowingly subjects another not his or her spouse to any sexual contact commits sexual assault on a child if the victim is less than fifteen years of age and the actor is at least four years older than the victim.

Domestic Violence-C.R.S. 18-6-800.3 means an act or threatened act of violence upon a person with whom the actor is or has been involved in an intimate relationship. Domestic Violence also includes any other crime against a person, or against property, including an animal or any municipal ordinance violation against a person, or against property, including an animal, when used as a method of coercion, control, punishment, intimidation, or revenge directed against a person with whom the actor is or has been involved in an intimate relationship.

Dating Violence-Violence committed by a person who is or has been in a social relationship of a romantic or intimate nature with the victim. The existence of such a relationship shall be determined based on the reporting party's statement and with consideration of the length of the relationship, the type of relationship, and the frequency of interaction between the persons involved in the relationship. There is no Colorado state law on dating violence; therefore, the college abides by the definition used in the Violence Against Women Reauthorization Act (VAWA) of 2013.

For purposes of this definition, dating violence includes, but is not limited to, sexual or physical abuse or the threat of such abuse. Dating violence does not include acts covered under the definition of domestic violence.

Stalking-C.R.S. 18-3-602. Means a person commits stalking if directly, or indirectly through another person, the person knowingly:

- Makes a credible threat to another person and, in connection with the threat, repeatedly follows, approaches, contacts, or places under surveillance that person, a member of that person's immediate family, or someone with whom that person has or has had a continuing relationship; or
- Makes a credible threat to another person and, in connection with the threat, repeatedly makes any form of communication with that person, a member of that person's immediate family, or someone with whom that person has or has had a continuing relationship, regardless of whether a conversation ensues; or
- Repeatedly follows, approaches, contacts, places under surveillance, or makes any form of communication with another person, a member of that person's immediate family, or someone with whom that person has or has had a continuing relationship in a manner that would cause a reasonable person to suffer serious emotional distress and does cause that person, a member of that person's immediate family, or someone with whom that person has or has had a continuing relationship to suffer serious emotional distress. For purposes of this paragraph (c), a victim need not show that he or she received professional treatment or counseling to show that he or she suffered serious emotional distress.

Additional definitions as it relates to "Stalking" under Colorado law:

- Conduct "in connection with" a credible threat means acts that further, advance, promote, or have a continuity of purpose, and may occur before, during, or after the credible threat.
- "Credible threat" means a threat, physical action, or repeated conduct that would cause a reasonable person to be in fear for the person's safety or the safety of his or her immediate family or of someone with whom the person
- has or has had a continuing relationship. The threat need not be directly expressed if the totality of the conduct would cause a reasonable person such fear.
- "Immediate family" includes the person's spouse and the person's parent, grandparent, sibling, or child.
- "Repeated" or "repeatedly" means on more than one occasion.

B. Education and Prevention Programs

The College engages in comprehensive educational programming to prevent domestic violence, dating violence, sexual assault and stalking. Educational programming consists of primary prevention and awareness programs for all incoming students and new employees and ongoing awareness and prevention campaigns for returning students and faculty that:

- Identifies domestic violence, dating violence, sexual assault and stalking as prohibited conduct;
- Defines what behavior constitutes domestic violence, dating violence, sexual assault, and stalking pursuant to Colorado law;
- Defines what behavior and actions constitute consent to sexual activity in the state of Colorado;
- Provides safe and positive options for bystander intervention that may be carried out by an individual to prevent harm or intervene when there is a risk of domestic violence, dating violence, sexual assault, or stalking against a person other than the bystander;
- Provides information on risk reduction so that students and employees may recognize warning signs of abusive behavior and how to avoid potential attacks; and
- Provides information on the procedures the college will adhere to after a sex offense occurs.

Source: 34 CFR SS668.46 (j)(1)(i)(A)-(F)

Educational programs are offered to raise awareness for all incoming students and employees, and are often conducted during new student and new employee orientation and throughout an incoming student's first semester. These programs and others offered throughout the year include strong messages regarding not just awareness, but also primary prevention. Bystander engagement is encouraged through safe and positive intervention techniques and by empowering third-party intervention and prevention such as calling for help, using intervention-based apps, identifying allies and/or creating distractions.

Programs also offer information on risk reduction that strives to empower victims, how to recognize warning signals and how to avoid potential attacks, and do so without victim-blaming approaches. Throughout the year, ongoing awareness and prevention campaigns are directed to students and employees, including faculty, often taking the form of campaigns, emails, guest speakers and events such as:

The College offered the following **primary prevention and awareness programs for all incoming students** in 2020-2021:

<u>Name of Program</u>	<u>Date Held</u>	<u>Location Held</u>	<u>Complied with Program Requirements</u>	<u>Which Prohibited Behavior Covered?*</u>
Campus-wide Marijuana statement	Annually – Spring, Summer, and Fall Semesters after census	Campus Policy	Educating and Awareness notification to all campus	Marijuana Usage on campus
Email to be sent to all student staff and faculty.	Annually – Spring, Summer, and Fall Semesters after census	Campus Policy	Notification of where to find DAAPP	All drug and alcohol usage
AlcoholEdu Ongoing Prevention	September 2020 – July 2021	ONLINE (Web-based alcohol/other drug education/prevention training)	Awareness and Prevention Training for All Students	Alcohol, Marijuana, and prescription drug usage
Sexual Assault Prevention: Ongoing	September 2020 – July 2021	ONLINE (Web-based sexual violence prevention training)	Awareness and Prevention Training for All Students	Domestic Violence and Rape awareness. DoV, DaV, SA, S, & SH

The College offered the following **primary prevention and awareness programs for all new employees** in 2020-2021:

<u>Name of Program</u>	<u>Date Held</u>	<u>Location Held</u>	<u>Complied with Program Requirements</u>	<u>Which Prohibited Behavior Covered?*</u>
Drug and Alcohol policy explained in hiring process to all potential employees.	Date of hiring	HR	Required notification and possible testing	The uses of drugs and alcohol

The College offered the following **ongoing awareness and prevention programs for students** in 2020-2021:

<u>Name of Program</u>	<u>Date Held</u>	<u>Location Held</u>	<u>Complied with Program Requirements</u>	<u>Which Prohibited Behavior Covered?</u>
Awareness of Alcohol	Annually – Spring, Summer, and Fall Semesters after census	Email to all students at each campus	Awareness and Prevention Program	Alcohol use and abuse; treatment
Awareness of Marijuana	Annually – Spring, Summer, and Fall Semesters after census	Email to all students at each campus	Awareness and Prevention Program	Marijuana use and abuse; treatment
Awareness of heroin	Annually – Spring, Summer, and Fall Semesters after census	Email to all students at each campus	Awareness and Prevention Program	Heroin use and abuse; treatment
Awareness of Prescription Drugs	Annually – Spring, Summer, and Fall Semesters after census	Email messages and other communications	Awareness and Prevention Program	Drug use and abuse; treatment
AlcoholEdu Ongoing Prevention	September 2020 – July 2021	ONLINE (Web-based alcohol/other drug education/prevention training)	Awareness and Prevention Training for All Students	Alcohol, Marijuana, and prescription drug usage
Sexual Assault Prevention: Ongoing	September 2020 – July 2021	ONLINE (Web-based sexual violence prevention training)	Awareness and Prevention Training for All Students	Domestic Violence and Rape awareness. DoV, DaV, SA, S, & SH
Online New Student Orientation (NSO) is open and accessible to returning students Some returning students review this resource to “remind” themselves of available PCC resources	August 2020 November 2020 Summer 2021	ONLINE New Student Orientation	References the EVERFI AlcoholEdu Ongoing Prevention and Sexual Assault Prevention: Ongoing Online NSO also includes the link to the PCC Title IX webpage	PCC Title IX webpage
PCC Social Media Posts & Inclusion in PCC FYI News	Throughout 2020 - 2021	Social Media Posts & Inclusion in PCC FYI News	Continued prevention educational opportunities and	National Suicide Prevention Month

Any area underlined is a hyperlink which will direct you to a website.

	September 2020 October 2020 January 2021 April 2021		support for All Students	Domestic Violence Awareness Month DoV, DaV, SA, S, & SH Human Trafficking Awareness Month SA, S, & SH Sexual Assault Awareness Month SA, S, & SH National Alcohol Awareness & Prevention Month
--	--------------------------------------------------------------	--	-----------------------------	------------------------------------------------------------------------------------------------------------------------------------------------------------------------------------------------------------------------------------------------

C. Procedures for Reporting a Complaint

The College has procedures in place that serve to be sensitive to those who report sexual assault, domestic violence, dating violence, and stalking, including informing individuals about their right to file criminal charges as well as the availability of medical, counseling and support services, and additional remedies to prevent contact between a complainant and an accused party, such as academic, transportation and working accommodations, if reasonably available. Students and employees should contact:

PUEBLO CAMPUS – Dean of Students

FREMONT CAMPUS – Director of Student Services

PCC SOUTHWEST CAMPUS AND SITES – Director of Student Success

After an incident of sexual assault and domestic violence, the victim should consider seeking medical attention as soon as possible at the local hospital in your area. In Colorado, evidence may be collected even if you choose not to make a report to law enforcement. It is important that a victim of sexual assault not bathe, douche, smoke, change clothing or clean the bed/linen/area where they were assaulted if the offense occurred within the past 96 hours so that evidence as may be necessary to the proof of criminal activity may be preserved. In circumstances of sexual assault, if victims do not opt for forensic evidence collection, health care providers can still treat injuries and take steps to address concerns of pregnancy and/or sexually transmitted disease.

Victims of sexual assault, domestic violence, stalking, and dating violence are encouraged to also preserve evidence by saving text messages, instant messages, social networking pages, other communications, and keeping pictures, logs or other copies of documents, if they have any, that would be useful to College hearing boards/investigators or police.

Although the College strongly encourages all members of its community to report violations of this policy to law enforcement, it is the victim's choice whether or not to make such a report and victims have the right to decline involvement with the police. The Colleges Office of Dean of Students will assist any victim with notifying local police if they so desire. Local law enforcement may be reached directly by calling the following numbers or going directly to their offices:

PUEBLO:	On campus:	PCC Police Department – 719.549.3355 Student Center, Room 152
	Off campus:	Pueblo City Police Department – 719.553.2538 200 South Main Street Pueblo County Sheriff's Office – 719.583.6250 320 West 10 th Street #B1
	CAÑON CITY:	On campus: PCC Police Department – 719.296.6130 Fremont Campus, Room L104
	Off campus:	Cañon City Police Department – 719.276.5608 161 Justice Center Road
DURANGO:	On or off campus:	Durango Police Department – 970.375.4700 990 East 2 nd Avenue
MANCOS:	On or off campus:	Montezuma Sheriff's Department – 970.565.8452, 730 East Driscoll Street, Cortez, CO
BAYFIELD:	On or off campus:	Bayfield Marshal's Office – 970.884.9636 1199 Bayfield Parkway, Bayfield, CO

If you have been the victim of domestic violence, dating violence, sexual assault, or stalking, you should report the incident promptly to the Title IX Coordinator, Ken Nufer, (Pueblo Campus Central Administration, Room 112, Pueblo, CO 81004; [email](#): telephone: 719.549.3220, and the PCC Police Department (Pueblo Campus Student Center, Room 152 (if you wish to do so).

The Title IX Coordinator is ultimately responsible to assure in all cases that the behavior is brought to an end, the College acts to reasonably prevent its recurrence, and the effects on the victim and the community are remedied. The Coordinator is also responsible to assure that training is conducted annually for all advocates, investigators, hearing officers, panelists and appeals officers that encompass a hearing process that protects the safety of victims and promotes accountability. Training will focus on sexual misconduct, domestic violence, dating violence, sexual assault, stalking, sexual harassment, retaliation and other behaviors that may be considered forms of sex or gender discrimination covered by Title IX and Clery Act. Training will help those decision-makers in the process to protect the safety of victims and to promote accountability for those who commit offenses.

The College will provide resources to persons who have been victims of sexual assault, domestic violence, dating violence, or stalking, and will apply appropriate disciplinary procedures to those who violate this policy. The procedures set forth below are intended to afford a prompt response to charges of sexual assault, domestic or dating violence, and stalking, to maintain confidentiality and fairness consistent with applicable legal requirements, and to impose appropriate sanctions on violators of this policy. The Victim’s Bill of Rights pamphlet may be obtained at the Pueblo Campus in the PCC Police Department located in the Student Center, Room 152; Fremont Campus in the Fremont Police Department located in Room L104; Durango Site – Durango High School, Joaquin McDonald; Bayfield Site – Bethany Powell, and Mancos Campus – Lisa Molina, Room 103, which outlines resources and includes contact information for legal assistance with visa and immigration.

As time passes, evidence may dissipate or become lost or unavailable, thereby making investigation, possible prosecution, disciplinary proceedings, or obtaining protection from abuse orders related to the incident more difficult. If a victim chooses not to make a complaint regarding an incident, he or she nevertheless should consider speaking with the PCC Police Department or other law enforcement to preserve evidence in the event that the victim changes her/his mind at a later date.

If a report of domestic violence, dating violence, sexual assault or stalking is reported to the College, below are the procedures that the College will follow as well as a statement of the standard of evidence that will be used during any administrative hearing on campus arising from such a report:

Incident Being Reported:	Procedure Institution Will Follow:	Evidentiary Standard
<p>Sexual Assault</p>	<ol style="list-style-type: none"> 1. Depending on when reported (immediate vs. delayed report), institution will provide complainant with access to medical care; 2. Institution will assess immediate safety needs of complainant; 3. Institution will assist complainant with contacting local police if complainant requests AND complainant provided with contact information for local police department; 4. Institution will provide written information to complainant on how to preserve evidence; 5. Institution will provide complainant with referrals to on and off campus mental health providers; 6. Institution will assess need to implement interim or long-term protective measures, such as housing changes, change in class schedule, “No Contact” directive between both parties; 	<p>Sexual assault cases are referred to the Title IX Coordinator and are adjudicated by the institution’s Sexual Misconduct and Civil Rights Grievance and Investigation Procedures using the preponderance of the evidence standard.</p>

Any area underlined is a hyperlink which will direct you to a website.

	<ol style="list-style-type: none">7. Institution will provide a “No trespass” (PNG) directive to accused party if deemed appropriate;8. Institution will provide written instructions on how to apply for Protective Order;9. Institution will provide student victims with financial aid related services;10. Institution will provide a copy of the Sexual Misconduct and Civil Rights Grievance and Investigation Procedures to complainant and inform the complainant and respondent and inform both parties of the timeframes for inquiry, investigation and resolution;11. Institution will inform the complainant of the outcome of the investigation, whether or not the accused will be administratively charged and what the outcome of the hearing;12. Institution will enforce the anti-retaliation policy and take immediate and separate action against parties that retaliate against a person for complaining of sex-based discrimination or for assisting in the investigation	
--	------------------------------------------------------------------------------------------------------------------------------------------------------------------------------------------------------------------------------------------------------------------------------------------------------------------------------------------------------------------------------------------------------------------------------------------------------------------------------------------------------------------------------------------------------------------------------------------------------------------------------------------------------------------------------------------------------------------------------------------------------------------------------------------------------------------------------------------------------------------------------------------------------------------------------------------------------------------------------------------------------------------------------------------------------------	--

Incident Being Reported:	Procedure Institution Will Follow:	Evidentiary Standard
Stalking	<ol style="list-style-type: none"> 1. Institution will assess immediate safety needs of complainant; 2. Institution will assist complainant with contacting local police if complainant requests AND provide complainant with contact information for local police department; 3. Institution will provide written instructions on how to apply for Protective Order; 4. Institution will provide written information to complainant on how to preserve evidence; 5. Institution will assess the need to implement interim or long-term protective measures to protect the complainant, if appropriate; 6. Institution will provide a “No trespass” (PNG) and/or “No Contact” directive to accused party if deemed appropriate; 7. Institution will provide student victims with financial related services. 	<p>Stalking cases are referred to the Dean of Students and adjudicated using the <i>preponderance of the evidence</i> standard. If the stalking is sexually based, it may fall under the institution’s Sexual Misconduct Procedure and if so, would be referred to the Title IX Coordinator and adjudicated under the institution’s Sexual Misconduct and Civil Rights Grievance and Investigation. Procedures using the <i>preponderance of the evidence</i> standard.</p>
Dating Violence	<ol style="list-style-type: none"> 1. Institution will assess immediate safety needs of complainant; 2. Institution will assist complainant with contacting local police if complainant requests AND provide complainant with contact information for local police department; 3. Institution will provide written instructions on how to apply for Protective Order; 4. Institution will provide written information to complainant on how to preserve evidence; 5. Institution will assess need to implement interim or long-term protective measures to protect the complainant, if appropriate; 6. Institution will provide a “No trespass” (PNG) and/or a “No Contact” directive to accused party if deemed appropriate 7. Institution will provide student victims with financial related services. 	<p>Dating Violence cases are referred to the Dean of Students and adjudicated using the preponderance of the evidence standard. If the dating violence incident is sexually based, it may fall under the institution’s Sexual Misconduct Procedure and if so, would be referred to the Title IX Coordinator and adjudicated under the institution’s Sexual Misconduct and Civil Rights Grievance and Investigation Procedures using the preponderance of the evidence standard.</p>

<p>Domestic Violence</p>	<ol style="list-style-type: none"> 1. Institution will assess immediate safety needs of complainant; 2. Institution will assist complainant with contacting local police if complainant requests AND provide complainant with contact information for local police department; 3. Institution will provide written instructions on how to apply for Protective Order 4. Institution will provide written information to complainant on how to preserve evidence; 5. Institution will assess need to implement interim or long-term protective measures to protect the complainant, if appropriate; 6. Institution will provide a “No trespass” (PNG) and/or a “No Contact” directive to accused party if deemed appropriate 7. Institution will provide student victims with financial related services. 	<p>Domestic Violence Cases are referred to the Dean of Students and adjudicated using the preponderance of the evidence standard. If the act of domestic violence is sexually based, it may fall under the institution’s Sexual Misconduct Procedure and if so, would be referred to the Title IX Coordinator and adjudicated under the institution’s Sexual Misconduct and Civil Rights Grievance and Investigation Procedures using the preponderance of the evidence standard.</p>
---------------------------------	-------------------------------------------------------------------------------------------------------------------------------------------------------------------------------------------------------------------------------------------------------------------------------------------------------------------------------------------------------------------------------------------------------------------------------------------------------------------------------------------------------------------------------------------------------------------------------------------------------------------------------------------------------------------------------------------------------------------------------------------------------------------------------------------------------------------------------------------------------------------------------	---------------------------------------------------------------------------------------------------------------------------------------------------------------------------------------------------------------------------------------------------------------------------------------------------------------------------------------------------------------------------------------------------------------------------------------------------------------------------------------

D. Assistance for Victims: Rights and Options

Regardless of whether a victim elects to pursue a criminal complaint, the College will assist victims of sexual assault, domestic violence, dating violence, and stalking and will provide each victim with a written explanation of their rights. In Colorado, a victim of domestic violence, dating violence, sexual assault or stalking has the following rights:

Rights Afforded to Victims-C.R.S. 24-4.1-302.5

In order to preserve and protect a victim's rights to justice and due process, each victim of a crime shall have the following rights:

- The right to be treated with fairness, respect, and dignity, and to be free from intimidation, harassment, or abuse, throughout the criminal justice process;
- The right to be informed of, be present or not present, and without submitting a written request for notification, for all critical stages of the criminal justice process as specified in state statute (C.R.S. 24-4.1-302(2) and 302.5);
- The right to be informed of the filing of a petition by a perpetrator of the offense to terminate sex offender registration pursuant to section 16-22-113(2)(c), C.R.S.;
- The right to be informed, upon request by the victim, when a person who is accused or convicted of a crime against the victim is released or discharged from county jail; and
- The right to be informed, upon written request by the victim, when a person who is accused or convicted of a crime against the victim is released or discharged from custody other than county jail, is paroled, escapes from a secure or non-secure correctional facility or program, or absconds from probation or parole.

Further, Pueblo Community College complies with Colorado law in recognizing orders of protection by requiring that the alleged abides by all provisions of the order or face both legal and College sanctions.

Any person who obtains an order of protection from Colorado or any reciprocal state should provide a copy to the PCC Police Department and the Office of the Title IX Coordinator. A complainant may then meet with the PCC Police Department to develop a Safety Action Plan, which is a plan for campus police and the victim to reduce risk of harm while on or off campus. This plan may include, but is not limited to: escorts, special parking arrangements, providing a temporary cellphone, changing classroom location or allowing a student to complete assignments from home. Protection from abuse orders may be available through an **Emergency Protection Orders**, C.R.S. 13-14-103.

Any county or district court shall have the authority to enter an emergency protection order, which may include:

- Restraining a party from contacting, harassing, injuring, intimidating, threatening, molesting, touching, stalking, sexually assaulting or abusing any other party, a minor child of either of the parties, or a minor child who is in danger in the reasonably foreseeable future of being a victim of an unlawful sexual offense or domestic abuse;
- Excluding a party from the family home or from the home of another party upon a showing that physical or emotional harm would otherwise result;
- Awarding temporary care and control of any minor child of a party involved;
- Enjoining an individual from contacting a minor child at school, at work, or wherever he or she may be found;
- Restraining a party from molesting, injuring, killing, taking, transferring, encumbering, concealing, disposing of or threatening harm to an animal owned, possessed, leased, kept, or held by any other party, a minor child of either of the parties, or an elderly or at-risk adult; or
- Specifying arrangements for possession and care of an animal owned, possessed, leased, kept, or held by any other party, a minor child of either of the parties, or an elderly or at-risk adult.

In cases involving a minor child, the juvenile court and the district court shall have the authority to issue emergency protection orders to prevent an unlawful sexual offense, or to prevent domestic abuse, when requested by the local law enforcement agency, the county department of social services, or a responsible person who asserts, in a verified petition supported by affidavit, that there are reasonable grounds to believe that a minor child is in danger in the reasonably foreseeable future of being the victim of an unlawful sexual offense or domestic abuse, based upon an allegation of a recent actual unlawful sexual offense or domestic abuse or threat of the same. Any emergency protection order issued shall be on a standardized form prescribed by the judicial department and a copy shall be provided to the protected person.

A verbal emergency protection order may be issued only if the issuing judge finds that an imminent danger in close proximity exists to the life or health of one or more persons or that a danger exists to the life or health of the minor child in the reasonably foreseeable future.

To the extent of the victim's cooperation and consent, College offices, including the offices of the academic deans, the Vice President of Student success, and the Dean of Students will work cooperatively to ensure that the complainant's health, physical safety, work and academic status are protected, pending the outcome of a formal College investigation of the complaint. For example, if reasonably available, a complainant may be offered changes to academic or working situations in addition to off campus counseling, health services and assistance in notifying appropriate local law enforcement. The Office of the Dean of Students is responsible for assisting the victim with these accommodations. Additionally, personal identifiable information about the victim will be treated as confidential and only shared with persons with a specific need to know who are investigating/adjudicating the complaint or delivering resources or support services to the complainant. The College does not publish the name of crime victims nor house identifiable information regarding victims in the PCC Police Department Daily Crime Log or [online](#). Victims may request that directory information on file be removed from public sources by request through the PCC Office of Admissions and Records.

PCC Financial Aid Services

If a student victim would like information regarding financial aid services, please contact the Director of Financial Aid, 719.549.3200. The College can assist students with information on how to apply for a withdrawal from classes or about options for addressing concerns about loan repayment terms and conditions.

Resources for victims of Domestic Violence, Dating Violence, Sexual Assault & Stalking

On-Campus

Department	Location	Phone
Health Clinic	Pueblo Campus – HS 118	719.549.3315
Dean of Students	Pueblo Campus – SC-261	719.549.3035
PCC Police Department	Pueblo Campus – SC 152	719.549.3355
Contact Local Law Enforcement	PCC Southwest Site (Durango)	970.375.4700
Contact Local Law Enforcement	PCC Southwest Site (Bayfield)	970.884.9636
Contact Local Law Enforcement	PCC Southwest Campus (Mancos)	970.564.9556 or 970.533.1432

Community Resources

Agency	Address	Phone
LOCAL POLICE	Pueblo – 200 South Main Street	719.553.2538
	Cañon City – 161 Justice Center Road	719.276.5608
	Durango – 990 East 2 nd Street	970.375.4700
	Cortez – 730 East Driscoll Street	970.565.8452
	Bayfield – 1199 Bayfield Parkway	970.884.9636
LOCAL HOSPITALS		
Parkview Medical Center	400 West 16 th Street, Pueblo	719.584.4000
St. Mary Corwin Hospital	1008 Minnequa Avenue, Pueblo	719.557.4000
St. Thomas More Hospital	1336 Phay Avenue, Cañon City	719.285.2000
Mercy Regional Medical Center	1010 Three Springs Boulevard, Durango	970.247.4311
Southwest Memorial Hospital	1311 North Mildred Road, Cortez	970.565.6666
SEXUAL VIOLENCE CENTERS		
Pueblo Rape Crisis Services	503 North Main Street, #526	719.544.1191
Health Solutions Behavioral Health Center	3691 Parker Boulevard, Pueblo	791.543.7115
Family Crisis Services	Cañon City	719.275.2429
Domestic Violence Prevention	1060 Main Avenue, Durango	970.259.7457
Renew, Inc.	Cortez	970.565.4886
Pueblo YWCA Family Crisis Shelter	801 North Santa Fe Avenue	719.545.8195

Other resources available to persons who report being the victim of sexual assault, domestic violence, dating violence, or stalking, include:

[Colorado Coalition Against Sexual Assault](#)
[Colorado Coalition Against Domestic Violence](#)
[Colorado Anti-Violence Program](#), Building Safety and Justice for LGBTQ Communities
[Colorado State Employee Assistance Program](#)
[Rape, Abuse and Incest National Network](#)
[National Sexual Violence Resource Center](#)
[National Resource Center on Domestic Violence](#)
[National Domestic Violence Hotline](#)
[Survivor Project \(a resource for Intersex and Trans people\)](#)
[Men Can Stop Rape](#)
[Make the Connection](#) (Support for Veterans)
[1 is 2 Many](#) (Focus on teens and young women ages 16-24)
[Not Alone Together Against Sexual Assault](#)
[Department of Justice](#)
[Department of Education, Office of Civil Rights](#)

E. Adjudication of Violations

Whether or not criminal charges are filed, the College or a person may file a complaint under the Civil Rights Grievance and Investigation Process. If the respondent to a complaint is a CCCS employee, authorized volunteer(s), guest(s), or visitor(s), [SP 19-60](#) will apply. If the respondent is a student, [SP 19-60](#) applies. Reports of all domestic violence, dating violence, sexual assault and stalking made to PCC Police Department will automatically be referred to the Title IX Coordinator for investigation regardless if the complainant chooses to pursue criminal charges.

The College's civil rights grievance and investigation process, as well as the discipline process, will provide prompt, fair, and impartial investigation and resolution that is:

- Completed within reasonably prompt timeframes which, pursuant to our procedure, is sixty (60) days. If the college finds it necessary to extend this timeline, they may do so for good cause. The college will provide written notice to the accuser and the accused of the delay and the reason for the delay;
- The processes shall be conducted in a manner that is transparent to the accuser and accused;
- The processes allow for timely notice of meetings at which the accuser or accused, or both, may be present;
- Provides timely access to the accuser, the accused, and appropriate officials to any information that will be used after the fact-finding investigation but during the disciplinary meetings and hearings; and
- Conducted by officials who do not have a conflict of interest or bias for or against the accuser or the accused.

All college officials involved with the investigation and discipline process are trained annually on the issues related to domestic violence, dating violence, sexual assault, and stalking. These employees are taught how to conduct an investigation and hearing process that protects the safety of the victim and promotes accountability.

After the civil rights grievance and investigation process is concluded, the findings are shared with the disciplinary authority to begin the college's discipline process.

If the accused is an employee, sanction decisions are outlined in:

- For faculty, disciplinary action will be in compliance with [BP 3-20](#).
- For classified employees, disciplinary action will be taken pursuant to the [State Personnel Rules and Regulations](#).
- For administrative and professional/technical employees, there is no specific procedure outlined on discipline; therefore, the appointing authority will conduct a prompt, fair and impartial discipline process.
- For authorized volunteers, guests and visitors, there is no specific applicable procedure; therefore, the responsible party or designee will conduct a prompt, fair and impartial discipline process.

If the accused is a student, [SP 4-30](#), Student Disciplinary Procedure, applies. The student discipline process, in all cases, provides that:

1. The accuser and the accused each have the opportunity to meet with the Dean of Students, for students, or the Appointing Authority/Disciplinary Authority, for Colorado Community College System (CCCS) employees, authorized volunteers, guests and visitors;
2. Attend a hearing before a properly trained hearing panel or person;
3. The accuser and the accused each have the opportunity to be advised by a personal advisor of their choice, at their expense, at any stage of the process and to be accompanied by that advisor at any meeting or hearing.
4. An advisor may only consult and advise his or her advisee, but not speak for the advisee at any meeting or hearing. These procedures are entirely administrative in nature and are not considered legal proceedings. The System or College may remove or dismiss an advisor who become disruptive or who does not abide by the restrictions on their participation as explained above.

5. An employee and student conduct decision is based on the preponderance of evidence standard, i.e. “more likely than not to have occurred” standard. In other words, the conduct process asks: “is it more likely than not that the accused violated State Board for Community Colleges and Occupational Education (SBCCOE) Policy.
6. The accuser and the accused will be notified simultaneously in writing of the outcome of any disciplinary proceeding, and shall be given the rationale for the discipline decision.
7. When a complainant does not consent to the disclosure of his or her name or other identifiable information to the alleged perpetrator, the College’s ability to respond to the complaint may be limited.

Confidentiality

The College will protect the identity of persons who report having been victims of sexual assault, domestic violence, dating violence, or stalking to the fullest extent of the law.

Sanctions and Protective Measures

In all cases, investigations that result in a finding of more likely than not that a violation(s) has occurred may lead to the initiation of disciplinary procedures against the accused individual. Examples of college sanctions may include, but are not limited to:

- For students-warning, probation, fines, restitution, denial of privileges, assignment to perform services for the benefit of the college or community, suspension, expulsion, or “No trespass” directive (PNG).
- For CCCS employees-warning, written warning, corrective actions, probation, restitution, denial of privileges, suspension, and termination of employment, a “Cease Communication” directive or “No trespass” directive (PNG).
- For authorized volunteers, guest(s), or visitors-warning, writing warning, denial of privileges, dismissal from College, a “Cease Communications” directive, or a “No trespass” directive (PNG).

Additionally, the College may implement protective measures following the report of domestic violence, dating violence, sexual assault and/or stalking which may include some or all of the following actions: changing of class schedules, restrictions on campus usage, interim or permanent suspensions, College expulsion. For students, sexual assault, domestic violence, dating violence, and stalking are violations of the Student Conduct Code. Employees who violate this policy will be subject to discipline, up-to-and- including termination of employment. Sexual assault, domestic violence, dating violence, and stalking are criminal acts which also may subject the perpetrator to criminal and civil penalties under federal and state laws.

The Title IX Coordinator will determine whether interim interventions and protective measure should be implemented, and, if so, take steps to implement those protective measures as soon as possible. Examples of interim protective measures include, but are not limited to: an order of no contact, residence hall relocation, adjustment of course schedules, a leave of absence, or reassignment to a different supervisor or position. These remedies may be applied to one, both, or multiple parties involved. Violations of the Title IX Coordinator’s directives and/or protective measures will constitute related violations that may lead to additional disciplinary action. Protective measures imposed may be temporary pending the results of an investigation or may become permanent as determined by Pueblo Community College.

Sex Offender Registration

In accordance to the Campus Sex Crimes Prevention Act of 2000, which amends the Jacob Wetterling Crimes Against Children and Sexually Violent Offender Registration Act, the Jeanne Clery Act and the Family Educational Rights and Privacy Act of 1974, the College is providing a link to the Colorado State Sex Offender Registry. All sex offenders are required to register in the state of Colorado and to provide notice of each institution of higher education in Colorado at which the person is employed, carries a vocation or is a student.

In Colorado, convicted sex offenders must register with the Colorado Bureau of Investigation (CBI). [The Colorado sex offender website](#).

Prohibition on Retaliation

An institution, or an officer, employee, or agent of an institution, may not retaliate, intimidate, threaten, coerce, or otherwise discriminate against any individual for exercising their rights or responsibilities under any provision in this policy. Pueblo Community College will take a violation of this policy seriously. Any student who violates this policy will be subject to disciplinary sanctions which may include expulsion from the College. Any college employee who violates this policy will be subject to disciplinary sanctions to include possible termination of employment.

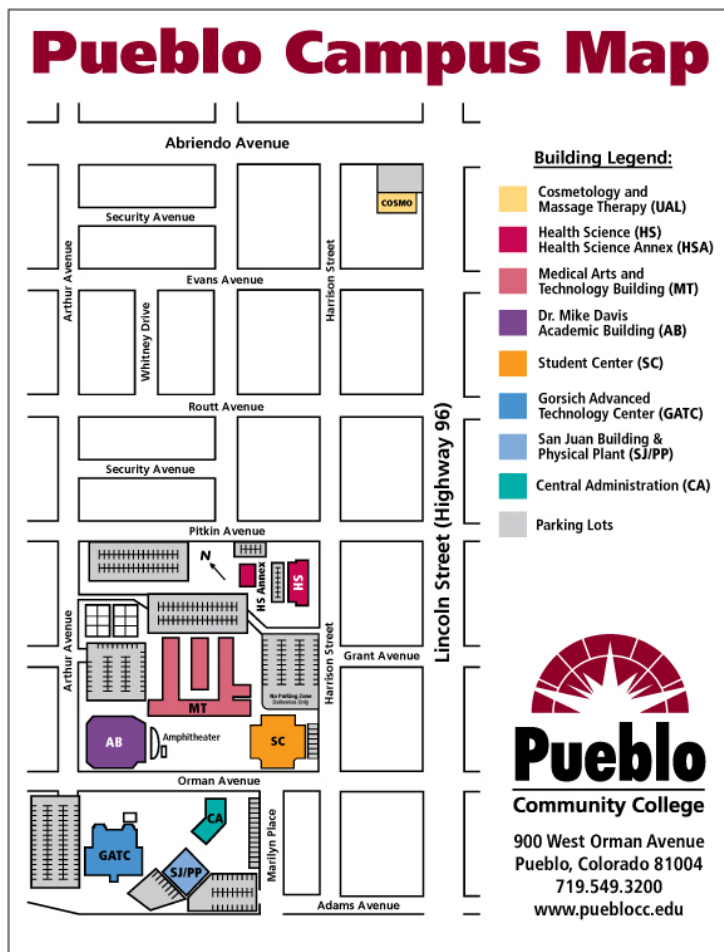
Pueblo Community Colleges' Geographic Description

[Pueblo Community College](#) (PCC) is a two-year public comprehensive community college, one of thirteen community colleges within the [Colorado Community College System](#) (CCCS). PCC has five locations serving students in a widely dispersed eight-county region in Southern Colorado.

The main campus is located in Pueblo, Colorado serving Pueblo County. The Fremont Campus, located approximately 35 miles (56 km) west of Pueblo in Cañon City, CO, serves Fremont and Custer Counties. The PCC Southwest Colorado Community College Campus, 280 miles (450 km) southwest of Pueblo, operates three campus locations: The PCC Southwest Campus, located on Highway 160 between Mancos and Cortez CO; the PCC Southwest Site (Durango), located at the Durango High School, 2320 Main Avenue, Durango, CO, both serve the Montezuma, Dolores, La Plata, San Juan, and Archuleta Counties, and the PCC Southwest Site (Bayfield) located at 110 East South Street. In addition, the College has a Downtown Studio located in the heart of downtown Pueblo.

Pueblo Campus

The Pueblo Campus - located at 900 W. Orman Avenue, Pueblo CO 81004 is the main campus surrounded by a residential area. The campus has eight buildings on 33 acres serving approximately 3,622 students. The campus is bordered by Harrison Street on the east, Marilyn Place on the southeast, Cleveland Street on the west, Adams Street on the south, and Pitkin Avenue on the north. West Orman Avenue, a city owned street, runs east and west through the center of the campus.



Downtown Studio/Small Business Development Center

The Pueblo Community College Downtown Studio and the Small Business Development Center (SBDC) occupy space in a one block area building on the lower level southeast corner located at 150 West City Central Drive and Main Street, Pueblo, CO 81004 in downtown Pueblo. The Studio and SBDC are approximately 2 miles from the PCC main campus. The building is bordered by Santa Fe Street to the east, Main Street to the west, West 2nd Street to the north and City Center Blvd., to the south. Other commercial businesses also occupy space in the same building and other commercial businesses surround the building on the west and north sides.

The Downtown Studio was established as a drop in location to help PCC fulfill its mission to grow and support the veteran community by reaching out to all generations of veterans and actively helping them transition from military service to college life. Since its opening, the Studio also serves as a drop in one-stop service office for other displaced workers needing to make a transition to college life on PCC's main campus and equally serves new and current students at this location.

The Small Business Development Center provides free business services to new and prospective small business owners in Pueblo, Fremont and Custer counties.

Cosmetology Location

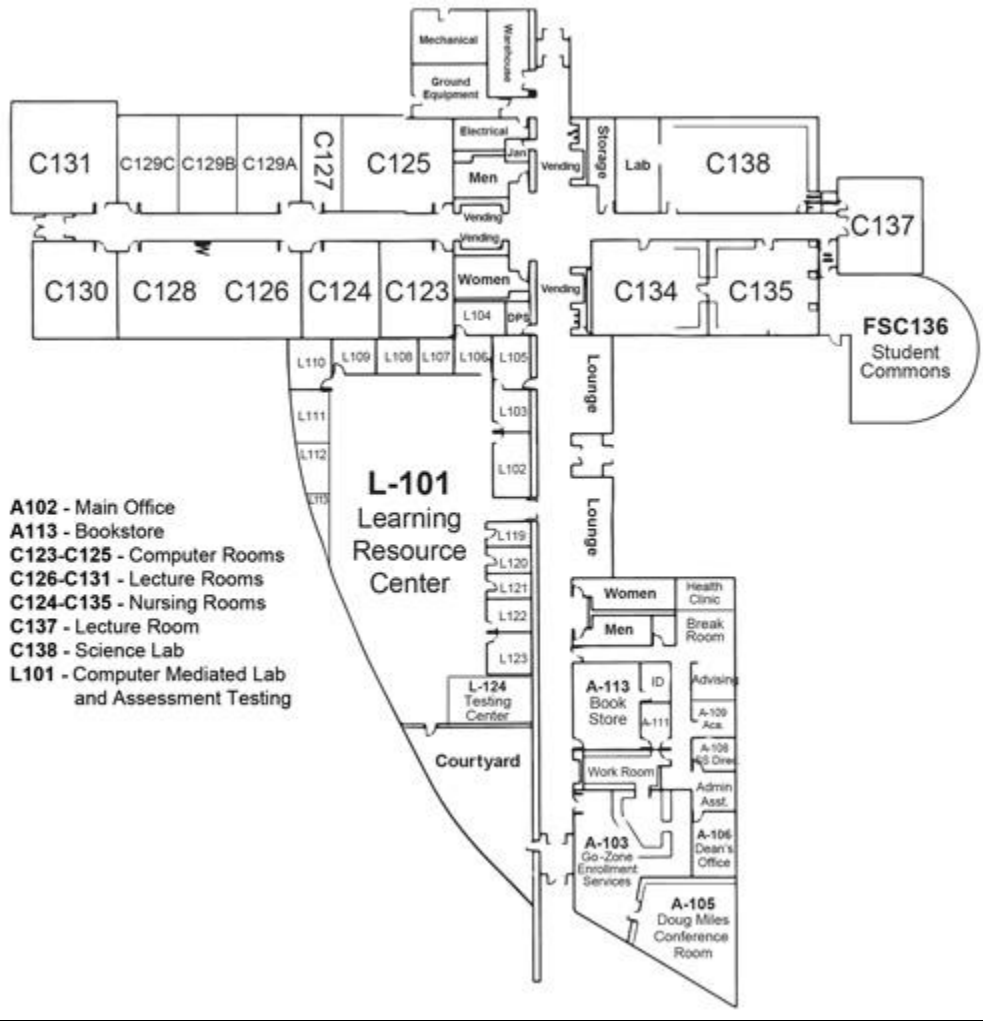
The Pueblo Community College Cosmetology program rents space and is located at 700 W Abriendo Ave, Pueblo CO 81004. The building is bordered by Abriendo Ave. on the northeast and Lincoln Ave. on the southeast.

St. Mary Corwin Location

Pueblo Community College has Simulation, MA, OT, and PT classrooms that are being used on the sixth (6th) floor; Surgical Tech has recently moved into the North East corner of the sixth (6th) floor and are running the entire program in this space, and the HALC learning lab is on the Second (2nd) floor.

Fremont Campus

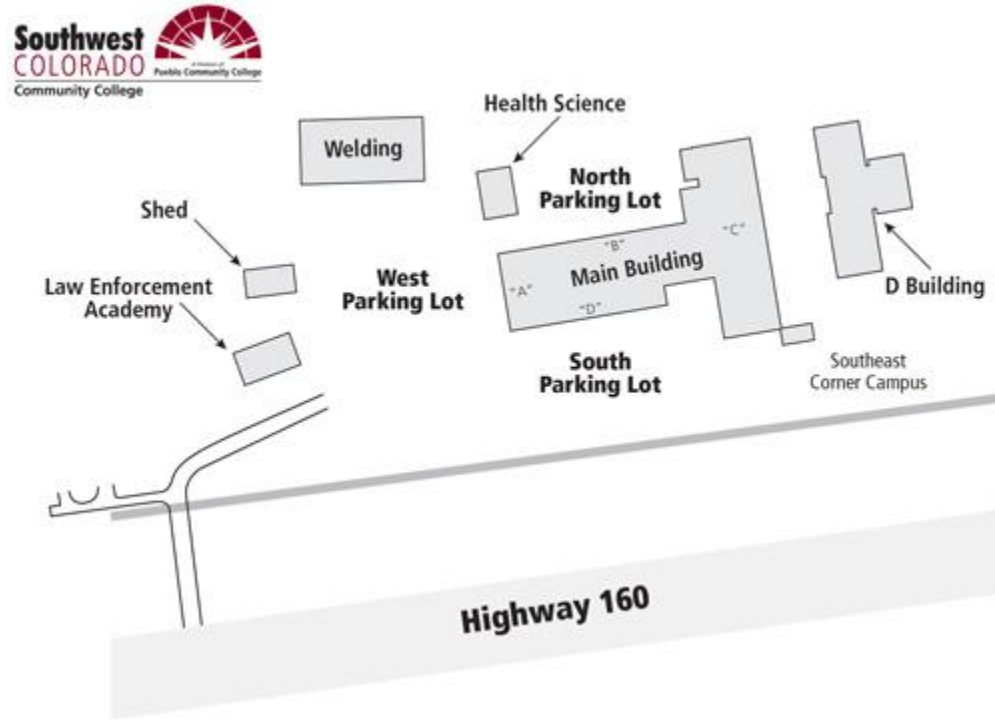
The Fremont Campus - located at 51320 West Highway 50, Cañon City, CO 81212. The campus is comprised of a single multipurpose building which accommodates offices and classrooms. The campus faces Highway 50 and is surrounded by vacant land.



PCC Southwest Community College Campus and Sites

The PCC Southwest is comprised of one campus and two sites:

PCC Southwest Campus (Mancos) – located at 33057 Highway 160, Mancos, CO 81328 is situated in between the cities of Mancos and Cortez, CO. The campus has six buildings on the campus property and is surrounded by vacant land.





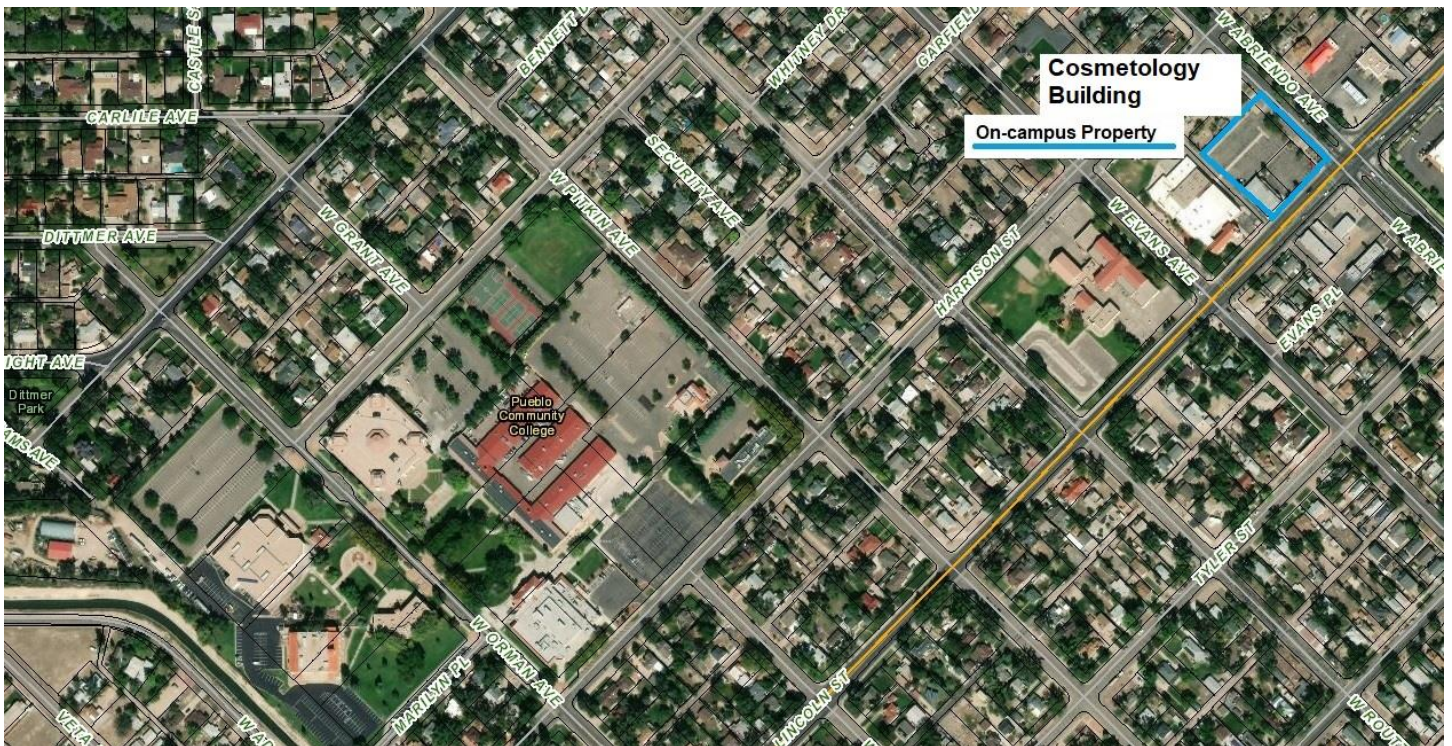
Southwest Site (Durango) – Through a partnership between Pueblo Community College (PCC) and Durango School District 9-R, PCC Southwest Durango site is located in the West wing of the Durango High School, 2320 Main Ave, Durango, CO 8130. The Durango site will have a separate entrance and designated parking on the DHS campus.

Southwest Site (Bayfield) – Pueblo Community College and the Bayfield School District are partnering to offer college courses to Bayfield High School students and the community. PCC will operate a site at 110 East South Street, the former location of Bayfield Primary School. The campus is comprised of a single multi-purpose building, which accommodates offices and classes. The building is bordered by East South Street and South East Street.

PCC Aerial View of Locations PUEBLO CAMPUS

PCC Pueblo Campus,
900 West Orman Ave
Pueblo, CO 81004

 Campus Boundary – State Owned
 Public Property



Any area underlined is a hyperlink which will direct you to a website.

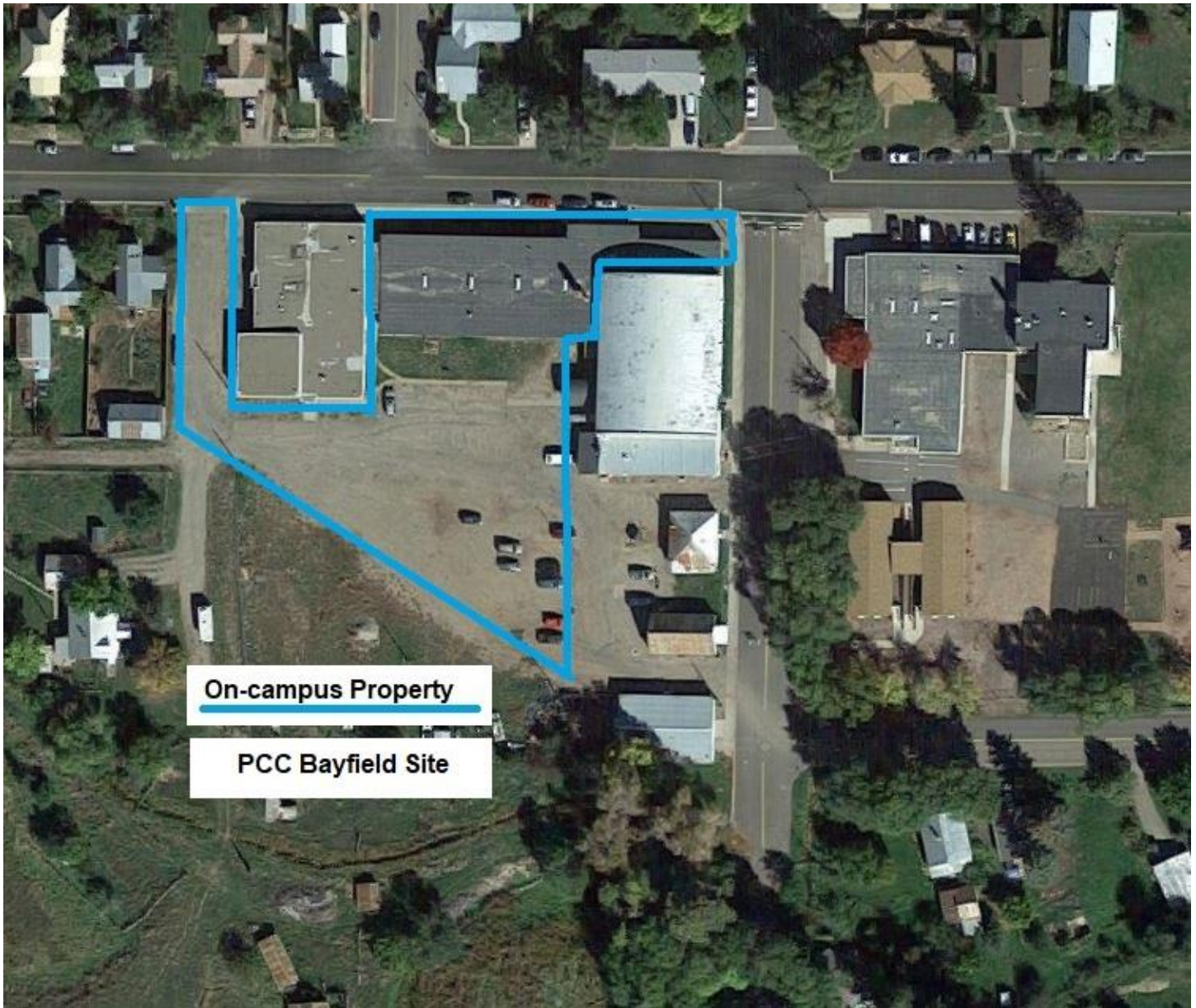
**PCC Aerial View of Locations
PUEBLO CAMPUS ST. MARY CORWIN (SMC)**



FREMONT CAMPUS



PCC SOUTHWEST SITE – BAYFIELD



Any area underlined is a hyperlink which will direct you to a website.

PCC SOUTHWEST SITE – DURANGO HIGH SCHOOL



Any area underlined is a hyperlink which will direct you to a website.

PCC SOUTHWEST SITE PARKING AREAS- DURANGO HIGH SCHOOL



Any area underlined is a hyperlink which will direct you to a website.

PCC SOUTHWEST CAMPUS – MANCOS

PCC SCCC West Campus,
33057 Hwy. 160
Mancos, CO 81328

— Campus Boundary – State Owned
- - - - - Public Property

