

2023 ANNUAL SECURITY REPORT
Reporting on the Calendar Years 2020, 2021, and 2022
Pueblo Campus, Fremont Campus, Southwest Durango Site,
Southwest Bayfield Site, and Southwest Mancos Campus



Published by the Pueblo Community College

Police Department

and

Dean of Students

[Contents](#)

2023 Pueblo Community College Annual Security Report	4
Executive Summary	4
Preparing the Annual Security Report Policy Statement	5
Law Enforcement Qualifications, Authority and Working Relationships with Other Enforcement Agencies Policy Statement	5
Accurate and Prompt Crime Reporting Policy Statement	5
Reporting a Crime to a Campus Security Authority (CSA) Policy Statement.....	6
Confidential Crime Reporting – Pastoral and Professional Counselors Policy Statement.....	6
Voluntary Confidential Reporting Policy Statement.....	6
Crime Prevention and Security Awareness Programs Policy Statement	7
Safety Escorts Policy Statement.....	7
Safety Plans Policy Statement.....	7
Safety Video Policy Statement	7
Security Lighting Assessment Policy Statement	7
Alcohol /Drug Awareness While Operating a Motor Vehicle Policy Statement	7
Registered Sex Offender Policy Statement	7
Timely Warning Policy Statement.....	8
Emergency Notification Policy Statement.....	9
Emergency Operations Plan Policy Statement.....	10
Emergency Response Guide(s) Policy Statement	10
Standard Response Protocol (SRP) Policy Statement.....	10
Security of and Access to Campus Facilities Policy Statement	11
Security Considerations Used in the Maintenance of Campus Facilities Policy Statement	11
Drug, Alcohol, and Substance Abuse Policy Statement.....	12
2022 Drug-Free Schools and Communities Act (DFSCA) and Biennial Review Policy Statement	13
Drug and Alcohol Awareness and Prevention Program (DAAPP) Policy Statement	13
Sex Offense Policy Statement	17
Disclosure of Results of Disciplinary Proceedings Policy Statement	22
Policy for Reporting the Annual Disclosure of Crime Statistics Policy Statement	22
Statement on Unfounded Crimes	22
Crime Statistics Information.....	23
Pueblo Campus	23
Fremont Campus	27
PCC Southwest Site (Durango)	30
PCC Southwest Site (Bayfield)	34
PCC Southwest Campus (Mancos)	38
Fire Safety Report & Missing Student Notification Policy Statement	42
APPENDIX A	43
Colorado Revised Statutes related to this document	43

Any area underlined is a hyperlink which will direct you to a website.

APPENDIX B	47
A. Definitions	47
B. Education and Prevention Programs	49
C. Procedures for Reporting a Complaint	54
D. Assistance for Victims: Rights and Options	59
E. Adjudication of Violations	62
Confidentiality	63
Sanctions and Protective Measures	63
Sex Offender Registration	64
Prohibition on Retaliation	64
APPENDIX C	65
Victim Assistance and Drug/Alcohol Referral Programs and Resources:	65
DRUG AND ALCOHOL ABUSE PREVENTION PROGRAMS	65
DRUGS AND ALCOHOL ON CAMPUS OR AS PART OF ANY COLLEGE ACTIVITY	65
Standards of Conduct for Students and Employees	65
Legal Sanctions	65
College Sanctions	65
Health Risks	65
Treatment and Referral	65
PREVENTION PROGRAMS – STUDENTS	66
Alcohol Abuse	66
Campus Survey	66
Drug Abuse	66
Use and Possession of Marijuana is Prohibited on Campus	66
Appendix A	67
18-13-122. Illegal possession or consumption of ethyl alcohol by an underage person - adolescent substance abuse prevention and treatment fund - legislative declaration	67
Appendix B	69
Health Risks of Alcohol and Drugs	69
Appendix C	71
Pueblo Campus	71
Fremont Campus	71
Mancos Campus, Bayfield, and Durango Sites	72
Addiction Resources	72
Violence Prevention & Resources	73
Suicide Prevention	74
Important PCC Public Safety Internet Links	74
Pueblo Community Colleges' Geographic Descriptions	75
PCC Aerial View of Locations	79
Statement of Non-Discrimination	86

Any area underlined is a hyperlink which will direct you to a website.

2023 Pueblo Community College Annual Security Report

Executive Summary

In compliance with the Jeanne Clery Disclosure of Campus Security Policy and Campus Crime Statistics Act of 1990, also known as the Clery Act, the Pueblo Community College Annual Security Report (ASR) is published each year in order to provide accurate information to potential and current students and employees about campus crime statistics, campus crime logs, and policies regarding the safety and security of the campus community. This report covers the main Pueblo Campus of Pueblo Community College (PCC), as well as other campuses/sites: Fremont Campus, Southwest Campus (Mancos), Southwest Site (Durango), and Southwest Site (Bayfield) and all policies and procedures pertain to each campus/site. PCC does not offer, own, or control campus housing. Additionally, PCC does not have or offer off-campus locations for recognized student organizations. Recognized student organizations do not own or control any off-campus locations.

Annually on or before October 1 and each semester thereafter, a notification of the report's availability is emailed to all current students and employees which consists of the last three (3) calendar years – 2020, 2021, and 2022. A link is provided for the current year's ASR containing a summary of its contents and where to obtain a copy. Prospective students who visit one of the campuses/sites are given a notification of availability form by Enrollment Services. Human Resources attaches notification of availability to job postings for those potential employees who apply on-line. As noted, a notification of the report's availability is emailed to all current students and employees, with a website link of the current year's ASR, a summary of its contents, and how to access the report.

A printed copy of the ASR may be obtained at the PCC Police Department, and Office of the Vice President of Student Success

Pueblo Community College posts the Annual Security Report (ASR) on its [website](#) or <https://pueblocc.edu/public-safety> under the Police Department's tab.

PCC Chief of Police
William Brown

Dean of Students
Vernon J. James



Any area underlined is a hyperlink which will direct you to a website.

Preparing the Annual Security Report Policy Statement

The PCC Police Department and the PCC Dean of Students (DOS) are responsible for the preparation of this annual report. Information provided in this report is in collaboration of information, policy statements, and Clery reportable crime statistics which are drawn from (but not limited to) the following partners: DOS, PCC Police Department, Human Resources, Local Law Enforcement, and Campus Security Authorities (CSAs).

Law Enforcement Qualifications, Authority and Working Relationships with Other Enforcement Agencies Policy Statement

Pueblo Community College maintains its own police department, which is housed at the Pueblo campus. The police officers are State-Certified peace officers who have been trained in Colorado Peace Officer Standards and Training (P.O.S.T.) procedures; therefore, possess authority per Colorado Revised Statute ([CRS 16-2.5-148](https://law.justia.com/codes/colorado/2016/title-16/code-of-criminal-procedure/article-2.5/part-1/section-16-2.5-101)) or <https://law.justia.com/codes/colorado/2016/title-16/code-of-criminal-procedure/article-2.5/part-1/section-16-2.5-101>, which includes the authority to arrest. PCC also employes state security guards that also have the authority to arrest per Colorado Revised Statute ([16-2.5-120](https://casetext.com/statute/colorado-revised-statutes/title-16-criminal-proceedings/code-of-criminal-procedure/article-25-peace-officers/part-1-peace-officers/section-16-25-120-colorado-state-higher-education-security-officer)) or <https://casetext.com/statute/colorado-revised-statutes/title-16-criminal-proceedings/code-of-criminal-procedure/article-25-peace-officers/part-1-peace-officers/section-16-25-120-colorado-state-higher-education-security-officer>. Officers and security guards conduct security patrols for PCC buildings, parking lots, and grounds to provide security for PCC students, employees, and visitors by identifying criminal activities, dangerous behavior or situations. Security guards are utilized at the Fremont and Southwest campuses, and the Durango site. PCC's main campus is located in the City and County of Pueblo; therefore, working closely with the Pueblo County Sheriff's Office, and the Pueblo Police Department. Memorandums of Understanding are in place with both agencies. The Fremont Campus is located in Cañon City and criminal incidents are handled by the Cañon City Police Department. There is a Memorandum of Understanding with the Cañon City Police Department. The Durango Police Department provides law enforcement services for the Durango site, the Bayfield Police Department provides law enforcement services for the Bayfield Site, and the Montezuma County Sheriff's Office provides law enforcement services for the PCC Mancos Campus.

Accurate and Prompt Crime Reporting Policy Statement

Community members, students, faculty, and staff are encouraged to report all crimes and public safety related incidents to Pueblo Community College Police Department (PCCPD) or the appropriate police agencies listed below in a timely and accurate manner. Pueblo Community College (PCC) encourages accurate and prompt reporting of all crimes when the victim of a crime elects to, or is unable to make such a report.

Colorado Revised Statutes 18-8-115 states: "It is the duty of every corporation or person who has reasonable grounds to believe that a crime has been committed to promptly report the suspected crime to law enforcement authorities. Notwithstanding any other provision of the law to the contrary, a corporation or person may disclose information concerning a suspected crime to other persons or corporations for the purpose of giving notice of the possibility that other such criminal conduct may be attempted which may affect the persons or corporations notified. When acting in good faith, such corporation or person shall be immune from any civil liability for such reporting or disclosure. This duty shall exist notwithstanding any other provision of the law to the contrary; except that this section shall not require disclosure of any communication privileged by law."

Crimes should be reported to PCCPD or local law enforcement agency for inclusion within the Annual Security and Fire Safety Report which includes crime statistics and may also be used to aid in the provision of timely warnings or emergency notification to the PCC community.

As outlined in the PCC Student Handbook, the College encourages and expects students, faculty, and staff to engage as active bystanders and report to College officials' incidents that involve infractions and/or concerning behavior outlined in the PCC Student Handbook.

Pueblo Campus - Pueblo Community College PCC Police Department, Student Center, Room 103 at 719.549.3355, or 911.

City of Pueblo – Pueblo Police Department, 200 S. Main St, Pueblo, Co 81003, at 719.553.2538

Pueblo County – Pueblo County Sheriff's Office, 909 Court St, Pueblo, CO 81003 at 719.583.6125

Fremont Campus - Pueblo Community College Police Department (Room L104), at 719.296.6130 or 911

City of Cañon City – Cañon City Police Department, 161 Justice Center Road, Cañon City, CO 81212 at 719.276.5600

Fremont County - Fremont County Sheriff's Officer, 100 Justice Center Road, Cañon City, CO 81212 at 719.276.5555

PCC Southwest Durango Site/City of Durango – Durango Police Department, 990 E. 2nd Ave., Durango, CO 81301 at 970.375.4700 or 911

PCC Southwest Campus - Mancos/City of Cortez - Montezuma County Sheriff's Office, 730 E Driscoll Street, Cortez, CO 81321 at 970.565.8452 or 911

PCC Southwest Bayfield Site/City of Bayfield – Bayfield Police Department, 1199 Bayfield Parkway, Bayfield, CO 81122 at 970.884.9636 or 911

Reporting a Crime to a Campus Security Authority (CSA) Policy Statement

Although Pueblo Community College encourages all criminal incidents be reported to law enforcement a student may report a crime to a Campus Security Authority; however, students may also report a crime to a Campus Security Authority (CSA) who is responsible for forwarding non-identifying information to the PCC Police Department for inclusion in the Annual Security Report, regardless of whether the victim chooses to file a report with law enforcement. CSAs are defined by Clery "as someone who has significant responsibility for students and campus activities." As outlined in the PCC Student Handbook, the College encourages and expects students, faculty, and staff to engage as active bystanders and report to College officials' incidents that involve infractions and/or concerning behavior outlined in the PCC Student Handbook. The following are a few examples of CSAs:

Campus Security Authorities

Club Sponsors
PCC Police Department
Disability Resources and Services Staff
Student Life Staff

Campus Security Authorities

Vice President of Student Success
Department Chairs
Success Coaches
Title IX Coordinators

Confidential Crime Reporting – Pastoral and Professional Counselors Policy Statement

Licensed professional mental health counselors and pastoral counselors (employed by religious organizations to provide confidential counseling) who are working within the scope of their license or religious assignment at the time they receive the crime report are exempt from reporting under the Clery Act. Individuals seeking confidential discussions of concerns may explore and utilize local professionals referenced above who are working within the scope of their license or religious assignment. Please refer to the Student Resource Guide Related to Sexual Misconduct, policies, procedures, and victim services located on the PCC Title IX & Sexual Misconduct [webpage](#) or <https://pueblocc.edu/Title-IX>.

PCC does not employ pastoral counselors at any campus or sites. Confidential reporting is available to individuals on the Pueblo Campus only. Counseling services are available through the Pueblo Campus Health Clinic through a Memorandum of Understanding with the Pueblo Community Health Center. Individuals also have the opportunity to use outside counseling services.

Pueblo Community College does not offer counseling services at our Fremont and Southwest Campuses/sites. Individuals are encouraged to utilize local counseling services.

Voluntary Confidential Reporting Policy Statement

Pueblo Community College (PCC) works in conjunction with Crime Stoppers and Safe2Tell. Victims and witnesses of a crime who wish to remain anonymous and keep their information confidential may call the following to report a crime anonymously and keep their information confidential. Please remember these are voice message systems and immediate action will not be taken. Crimes reported to PCC from Crime Stoppers and Safe2Tell will be investigated and included in the Daily Crime Log and the Annual Security Report if it's a Clery reportable crime. See section for Clery reportable crimes.

- **Pueblo Campus:** Please call 719.542.7867 or go to Pueblo Crime Stoppers at the following [link](#) or: <http://www.pueblocrimestoppers.com/sitemenu.aspx?P=index&ID=454>
- **Fremont Campus:** Please call 719.784.3411 or go to the Fremont County Crime Stoppers at the following [link](#) or: <https://www.canoncity.org/247/Crimestoppers>

Any area underlined is a hyperlink which will direct you to a website.

- **PCC Southwest Sites and PCC Southwest Campus:** Please call 970.375.4712 or go to Durango/La Plata Crime Stoppers at the following [link](https://www.durangogov.org/431/CrimeStoppers) or: <https://www.durangogov.org/431/CrimeStoppers>

You also have the option to use Safe2Tell for all campuses and sites by calling: 1.877.542.SAFE (7233) or go to: <https://safe2tell.org/>

Crime Prevention and Security Awareness Programs Policy Statement

The focus of these programs and services change depending on need. Currently, the following are offered:

Safety Escorts Policy Statement

Police Officers and security guards provide escorts to and from the parking lots as requested. Students, staff, and faculty members are encouraged to walk with friends or co-workers if a police officer or guard is unavailable.



Safety Plans Policy Statement

Safety plans outline emergency procedures specific to a division. PCC Police Department personnel will work with a representative from each division to review their safety plan. This is an opportunity to evaluate and make recommendations for security enhancements.

Safety Video Policy Statement

At the beginning of each semester faculty is required to show the safety video during the first days of class which contains information regarding Active Shooter incidents, Emergency Flip Charts, and the Standard Response Protocol (SRP) for Pueblo Community College (PCC). This video is also shown to the faculty and staff during an annual meeting and is available on the PCC employee and student portal. The SRP and Emergency Procedures Guide is posted throughout campus offices, suites, and classrooms.

Security Lighting Assessment Policy Statement

An assessment of the lighting at each campus/site is conducted to ensure optimal security for our campus population.

Alcohol /Drug Awareness While Operating a Motor Vehicle Policy Statement

Officers assist student groups in providing alcohol/drug awareness training as it pertains to operating a motor vehicle while under the influence.

Registered Sex Offender Policy Statement

In accordance to the Campus Sex Crimes Prevention Act of 2000, which amends the Jacob Wetterling Crimes Against Children and Sexually Violent Offender Registration Act, the Jeanne Clery Act and the Family Educational Rights and Privacy Act of 1974, the College is providing a link to the Colorado State Sex Offender Registry. All sex offenders are required to register in the state of Colorado and to provide notice of each institution of higher education in Colorado at which the person is employed, carries a vocation or is a student. In Colorado, convicted sex offenders must register with the Colorado Bureau of Investigation (CBI) at The Colorado sex offender [website](https://apps.colorado.gov/apps/dps/sor/) or <https://apps.colorado.gov/apps/dps/sor/>

Any area underlined is a hyperlink which will direct you to a website.

Additional information regarding registered sex offenders are available from the following resources:

[Pueblo Police Department](#) or <https://www.pueblo.us/710/Sex-Offender-Information>
200 South Main Street, Pueblo, CO 81003, 719.553.2502

[Cañon City Police Department](#) or <https://www.canoncity.org/Faq.aspx?QID=68>
161 Justice Center Road, Cañon City, CO 81212, 719.276.5600

[Pueblo County Sheriff's Office](#) or <https://www.pueblosheriff.com/>
909 Court Street, Pueblo, CO 81003, 719.583.6125

[Fremont County Sheriff's Office](#) or <https://crimewatch.net/us/co/fremont/sheriff/180579>
100 Justice Center Road, Cañon City, CO 81212, 719.276.5555

[Durango Police Department](#) or <https://www.durangogov.org/224/Police>
990 East 2nd Avenue, Durango, CO 81301, 970.375.4700

[La Plata County Sheriff's](#) or <https://www.co.laplata.co.us/sheriff.php>
283 Girard Street, Durango, CO 81303, 970.247.1157

[Montezuma County Sheriff's Office](#) or <https://montezumacounty.org/sheriffoffice/>
730 East Driscoll Street, Cortez, CO 81321, 970.565.8452

[Bayfield Police Department](#), or <https://www.bayfieldgov.org/policedepartment>
1199 Bayfield Parkway, Bayfield, CO 81122, 970.884.9636

Timely Warning Policy Statement

It is sometimes necessary to issue a timely warning to the campus community when a criminal incident is reported to campus law enforcement or a Campus Security Authority (CSA) and the criminal incident has taken place on campus property or adjacent to the campus, which constitutes a serious or on-going threat to the campus community. At a minimum, the following three (3) conditions should be met prior to issuing a timely warning. Please note that the college may send a timely warning for any crime or incident that may possess a continuing threat to the campus community:

1. One of the following crimes (Clery crime) is reported:
 - Criminal homicide – Including murder and non-negligent manslaughter, and manslaughter by negligence
 - Sex offenses – Including rape, fondling, incest, and statutory rape
 - Robbery
 - Aggravated assault
 - Burglary and/or motor vehicle theft
 - Arson
 - Hate crimes
 - Domestic violence, dating violence, or stalking
2. The reported crime occurred at a Clery-reportable location, (Clery geography) which is defined as:
 - On campus
 - On public property within or immediately adjacent to and accessible from the campus boundaries; or
 - In non-campus buildings or property. Non-campus locations are described as property that is owned or controlled by PCC, used for educational purposes, and frequently used by students
3. The reported crime presents a serious or continuing threat to PCC campus community.

The decision to issue a timely warning is on a case-by-case basis, and may be a collaborative effort between the PCC Police Chief or his/her designee, Marketing Director or his/her designee, and the President or his/her designee. If the incident occurred on a remote campus or site, the Executive Dean may be involved. When considering to issue a timely warning the following may be considered:

Any area underlined is a hyperlink which will direct you to a website.

- Nature of the crime
- Whether the suspect has been apprehended
- The continuing danger to the campus community
- Timeliness of the reported crime
- Does a pattern of crimes exist that places students, staff, or facility at risk of becoming victims of a similar crime?
- Does issuing the timely warning pose a risk of compromising law enforcement efforts

Notifications may be sent via MyPCC Alert app, the form of, but not limited to, text messages, emails, phone call(s), or social media, and are sent out by the PCC Police Chief or his/her designee, and or the Marketing Director or his/her designee.

Emergency Notification Policy Statement

Emergency notification is triggered by an event that is currently occurring on or imminently threatening the campus. This shall include a dangerous situation involving an immediate threat to the health or safety of campus members. This notification will be sent immediately upon confirmation of any significant emergency or dangerous situation occurring on the campus involving an immediate threat to the health or safety of students or employees. An "immediate" threat as used here includes an imminent or impending threat, such as an approaching forest fire, or a fire currently raging in one of the buildings. Some other examples of significant emergencies or dangerous situations are:

- Outbreak of meningitis
- Norovirus or other serious illness
- Approaching tornado, or extreme weather conditions
- Earthquake
- Gas leak
- Terrorist incident
- Active killer
- Hazardous Materials incident

PCC will use their best, reasonable judgment in all other situations to determine whether an emergency notification is warranted.

Other situations may arise where it may not rise to a level of an emergency, but may pose a health or safety risk which may also generate an emergency notification. Examples of this may include:

- Snow closures/delays
- Power Outages

The decision to issue an emergency notification will be decided on a case-by-case basis. Prior to an emergency notification being sent, the emergency or dangerous situation will be verified. Several avenues may be used to attempt to verify the emergency or dangerous situation. This may include, but not limited to:

- On-duty police officer / security guard
- Local first responders (police/fire)
- College Administrators
- Facilities personnel

Once the emergency or dangerous situation is confirmed, the following will be considered prior to sending the alert:

- Potential for injury or loss of life
- Potential for damage to property/facilities
- Interruption of critical services
- Urgency of the situation

The President or his/her designee, PCC Police Chief or his/her designee, or an Executive Dean or their designee, may authorize an emergency notification to be sent. The message will only be sent to the impacted campuses or sites. The campuses and sites are broken down in groups by geographic locations: Pueblo, Fremont, Mancos, and Durango.

Any area underlined is a hyperlink which will direct you to a website.

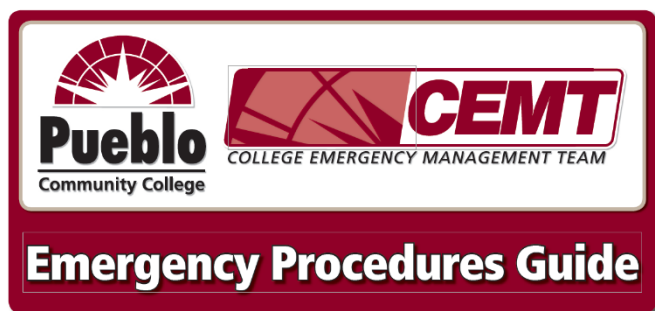
The PCC Police Chief or his/her designee or the Director of Marketing or his/her designee has the ability to send emergency notifications, via the MyPCC Alert app. In addition to the MyPCC Alert app, PCC police officers, PCC security guards, and administrators at the remote campuses and sites have the ability to lockdown campus buildings and send a prescriptive message in the event of an immediate threat such as an active shooter. This is accomplished via the electronic door lock software, which in turn activates the MyPCC Alert app.

The MyPCC Alert app uses several mechanisms to send the messages:

- Phone calls
- Text Messages
- Email to @pueblocc.edu and @student.cccs.edu accounts
- Pushes notifications to mobile devices that have MyPCC Alert app
- Social media
- Local media is included in the alerts and may broadcast the information

Emergency Operations Plan Policy Statement

PCC maintains an all-hazards Emergency Operations Plan that defines the College's emergency organizational structure and outlines emergency procedures for staff, faculty, and students. This plan is made available to the College community on the [PCC website](#) or <https://pueblocc.edu/sites/default/files/2022-08/EOP-12522-v2.pdf>.



Emergency Response Guide(s) Policy Statement

Recognizing the high number of part-time employees, adjunct instructors, and turnover among students in our college community, each classroom, office, or work area is equipped with a "flip chart" style Emergency Procedure Guide (EPG). The EPG lists the most common types of emergencies and provides clear, bulleted, step-by-step guidance on what specific actions to take during any emergency.

Standard Response Protocol (SRP) Policy Statement

A critical part of emergency preparedness is having a plan and a system in place to execute it. Pueblo Community College has adopted the "Standard Responses Protocol" to assist students, staff and faculty in the event of an emergency. The protocol is based on four (4) instructions:

IN AN EMERGENCY TAKE ACTION

	HOLD! In your room or area. Clear the halls. STUDENTS Clear the hallways and remain in room or area until the "All Clear" is announced. Do business as usual.	ADULTS Close and lock the door. Account for students, visitors and others. Do business as usual.										
	SECURE! Get inside. Lock outside doors. STUDENTS Return to inside of building. Do business as usual.	ADULTS Bring everyone indoors. Lock outside doors. Increase situational awareness. Account for students, visitors and others. Do business as usual.										
	LOCKDOWN! Locks, lights, out of sight. STUDENTS Move away from sight. Maintain silence. Do not open the door. Prepare to evade or defend.	ADULTS Remove people from hallway if possible. Close and lock the door. Turn out the lights. Move away from sight. Maintain silence. Do not open the door. Prepare to evade or defend.										
	EVACUATE! (A location may be specified) STUDENTS Leave stuff behind if required to. If possible, bring your phone. Follow instructions.	ADULTS Lead evacuation to specified location. Account for students, visitors and others. Notify if missing, extra or injured people.										
	SHELTER! Hazard and safety strategy. STUDENTS Use appropriate safety strategy for the hazard.	ADULTS Lead safety strategy. Account for students, visitors and others. Notify if missing, extra or injured students or adults.										
	<table border="0"> <tr> <td>Hazard</td> <td>Safety Strategy</td> </tr> <tr> <td>Tornado</td> <td>Evacuate to shelter area</td> </tr> <tr> <td>Hazmat</td> <td>Seal the room</td> </tr> <tr> <td>Earthquake</td> <td>Drop, cover and hold</td> </tr> <tr> <td>Tsunami</td> <td>Get to high ground</td> </tr> </table>	Hazard	Safety Strategy	Tornado	Evacuate to shelter area	Hazmat	Seal the room	Earthquake	Drop, cover and hold	Tsunami	Get to high ground	
Hazard	Safety Strategy											
Tornado	Evacuate to shelter area											
Hazmat	Seal the room											
Earthquake	Drop, cover and hold											
Tsunami	Get to high ground											

- **Hold** is stay in your room or area. Clear the halls.
- **Secure** is get inside. Lock outside doors.
- **Lockdown** is followed by "Locks, Lights, Out of Sight" this protocol is used to secure individual rooms and keep students quiet and in place.
- **Evacuate** is used to move students and staff from one location to a different location in or out of the building.
- **Shelter** is used when the need for personal protection is necessary such as weather-related threats.

The SRP is posted throughout PCC campuses/sites which may include classrooms and offices and available on the staff and student Portals, to include an SRP video. [Public Safety Website](#) or <https://pueblocc.edu/public-safety>.

Security of and Access to Campus Facilities Policy Statement

As a public facility, our campuses/sites are open to visitors, students, faculty, and staff during set operational hours. Normal business hours are 8:00 a.m. to 5:00 p.m., Monday – Friday. Due to the nature of higher education facility hours will vary each semester depending on class schedules and special events. Access to facilities after hours or during periods when the college is closed is limited based on individual/department needs and/or direction from college administration. Access and security of PCC buildings are a combination of electronic and mechanical locking hardware. The electronic access software and mechanical hardware are managed by the PCC Police Department and Facility Services. Video cameras are installed at each campus and site facilities. Cameras are recording and may be viewed live by identified personnel. PCC does employ police officers and/or security guards to assist with overall security on the Pueblo, Fremont, and Southwest campuses, as well as the Durango and Bayfield sites. For after-hours access or building schedule changes, contact the designated contacts for the applicable campuses/sites below as follows:

Fremont Campus – 719.296.6108

Pueblo Campus – 719.549.3355

PCC Southwest Campus and Sites:

Bayfield – 970.385.2098

Durango – 970.385.2020

Mancos – 970.564.6203

Security Considerations Used in the Maintenance of Campus Facilities Policy Statement

The PCC Police Department works with College divisions and offices to review their safety plans. Safety plans include (but not limited to) procedures for fire evacuation, lockdown, and lockout. A monthly lighting survey is completed by the PCC Police Department or their designee; the survey identifies lights that are out or areas that have insufficient lighting. A copy of the report is forwarded to Facilities Services to be addressed. Members of the campus community are encouraged to report any maintenance concerns to Facility Services at 719.549.3345.

Any area underlined is a hyperlink which will direct you to a website.

Drug, Alcohol, and Substance Abuse Policy Statement

In compliance with the Drug-Free Schools and Communities Act Amendment of 1989 [Public Law 101-226](#), or <https://www.congress.gov/bill/101st-congress/house-bill/3614/text> students, staff, faculty, or visitors shall not engage in the unauthorized or unlawful manufacture, distribution, dispensation, possession, use/abuse of alcohol and/or illicit drugs to include local, state, and federal law associated with underaged use and possession of alcohol and/or drugs on college property or as part of any college activity.

Any student, staff, or faculty who are convicted of the unlawful manufacture, distribution, dispensation, possession, use, or abuse of illicit drugs or alcohol is subject to criminal penalties under local, state, or federal law. These penalties range in severity from a fine of \$100 up to \$8,000,000 and/or life imprisonment. The exact penalty assessed depends upon the nature and the severity of the individual offense. The possession and/or consumption of alcohol by a minor is addressed in Appendix A (listed below), 18-13-122.

Additionally, to encourage students to seek medical assistance for themselves and/or others in the event of life-threatening circumstances from alcohol and/or other drugs and in the spirit of the Colorado revised statute 18-13-122 (listed below), students may be eligible (in the student conduct process) for medical amnesty if they proactively call 911 and/or Public Safety for help. The primary PCC administrator responsible for student conduct concerns (or their designee) may grant medical amnesty for the reporting student and/or student impacted by life threatening circumstances (from alcohol and/or drugs) may not be subject to disciplinary sanctions but may have educational sanctions in the student conduct process.

The College will impose penalties against students who violate the Drug-Free Schools and Communities Act Amendments of 1989 [Public Law 101-226](#) or <https://www.congress.gov/bill/101st-congress/house-bill/3614/text>. Violators will be subject to disciplinary action under student disciplinary policies. The sanctions include but are not limited to probation, suspension, or expulsion from the College, termination of employment, and referral to authorities for prosecution, as appropriate. Found in the 2023-2024 [Student Handbook](#) or https://pueblocc.edu/Student_Handbook.

Alcohol/Drugs: Use, being under the influence, manufacturing, possession, cultivating, distribution, purchase, or sale of alcohol and/or drugs (illegal and/or dangerous or controlled substance) and/or alcohol/drug paraphernalia while on College-owned or College-controlled property, and/or at any function authorized or supervised by the College, and/or in state owned or leased vehicles.

NOTE: Possession of a state of Colorado medical marijuana card does not entitle a student to possess or use marijuana on the College campus, buildings, or grounds. Although possession and use of marijuana for certain medical conditions consistent with the requirements of the Colorado Constitution is no longer a crime in the state of Colorado, the possession and use of marijuana remains illegal under federal law. Consistent with federal law, including the Controlled Substances Act and the Drug-Free School and Communities Act, the use and/or possession of marijuana by students is prohibited on College owned or College-controlled property, and/or any function authorized or supervised by the College and/or in state owned or leased vehicles.

Laws Related to Drug & Alcohol Use and Sale: Pueblo Community College will take immediate action and will enforce federal, state, and local law if any student, employee, or visitor is violating federal, state, and local law related to the use and sale of alcohol and/or drugs to include local, state, and federal law associated with underaged use and possession of alcohol and/or drugs. The possession, sale, and use of any illegal drug are strictly prohibited on the PCC Campus. This includes the use, sale, or distribution of marijuana on campus. Any violations will be immediately referred to the Pueblo County Sheriff's Office. Alcohol sale, use, and possession are dictated by Colorado law and PCC Policies and Procedures and will be strictly enforced.

The following applies to all students, employees, and guests of the College:

- The sale of alcoholic beverages is prohibited except in designated areas, at times and dates approved by PCC Administrators and licensed by the Colorado State Department of Revenue.
- Persons under 21 years of age cannot legally possess or consume malt (six (6) percent beer), fermented malt liquor (3.2 percent beer), vinous, or spirituous liquor. The furnishing of alcoholic beverages to underage persons is prohibited.
- No person under legal drinking age or any obviously intoxicated person shall be furnished, served, or given an alcoholic beverage.

Any area underlined is a hyperlink which will direct you to a website.

- Alcohol cannot be consumed or carried in open containers on any street, sidewalk, alley, automobile, or public area.

Violations of this policy may result in corrective or disciplinary action up to and including termination in accordance with Colorado Community College System Board Policy, System President Procedures, and/or State Personnel Rules. For additional information, please contact the Human Resource Office at 719.549.3220.

2022 Drug-Free Schools and Communities Act (DFSCA) and Biennial Review Policy Statement

In order to fulfill compliance, the 2022 Drug-Free Schools and Communities Act (DFSCA) and Biennial Review of PCCs alcohol and other drug related policies and programs for the 2021-2022 and 2022-2023. The objectives of the review as identified by the U.S. Department of Education included:

- Determining the effectiveness of the College's AOD programs.
- Implementing needed changes to alcohol and other drug programs.
- Ensuring the disciplinary sanctions for violating standards of conduct are enforced consistently by all college employees and students.

The Office of the Vice President of Student Success, in cooperation with the Dean of Students Office, and the Chief of Police at PCC is required to provide a signed statement certifying the Biennial Review and acknowledging awareness of the recommendations within the report. The President of the College, the Vice President of Student Success, the Dean of Students, and the Chief of Police have signed and affirmed the 2022 report. Drug-Free Schools and Communities Act (DFSCA) and Biennial Review Reports are maintained in the Vice President of Student Success Office located on the Pueblo Campus, Student Center, Room 261 and on the [Campus Safety website](#) or <https://puebloc.edu/public-safety>.

The Biennial Review Team will complete and publish the results of the statistical review and the College review, identifying the accomplishments (elements that demonstrated positive results) and recommendations for improvement (elements that need improvement or revision). The report also includes recommendations for any new elements that the College wishes to include in the Drug and Alcohol Awareness and Prevention Program (DAAPP) for the next two years.

Drug and Alcohol Awareness and Prevention Program (DAAPP) Policy Statement

Pueblo Community College conducted a survey of students during the fall 2014 semester and repeated the survey in fall 2016, 2018, 2020, 2022 and will repeat again in fall 2024, asking them about alcohol and drug prevalence on campus and the needs of students to address certain elements of alcohol and drug awareness and prevention. The survey results did not identify any specific needs or concerns beyond a general need for awareness and prevention. As a result of this survey, the Dean of Students Office and the PCC Health Clinic have designed a program to present awareness and prevention information and activities, however, the PCC employee of the Pueblo Community Health Center (PCHC) resigned April 2022. Educational programming has been primarily passive (bulletin board and printed information) with basic awareness / educational opportunities provided at large events to include PantherFest (early August and Spring fling [March event]).

The College offered the following **primary prevention and awareness programs for all incoming students** in 2022-2023:

<u>Name of Program</u>	<u>Date Held</u>	<u>Location Held</u>	<u>Complied with Program Requirements</u>	<u>Which Prohibited Behavior Covered?*</u>
Campus-wide Marijuana statement	Annually – Spring, Summer, and Fall Semesters after census	Campus Policy	Educating and Awareness notification to all campus	Marijuana Usage on campus
Emails sent to all student staff and faculty.	Annually – Spring, Summer, and Fall Semesters after census	Campus Policy	Notification of where to find DAAPP	All drug and alcohol usage
Emails sent to all student staff and faculty.	Annually – Spring, Summer, and Fall Semesters after census	Campus Policy	Notification Biennial Report, Student Handbook, Annual Security Report, Drug-Free Work Place	All drug and alcohol usage, prohibited behavior outlined in the student handbook

Any area underlined is a hyperlink which will direct you to a website.

			Document, Drug Alcohol and Awareness Policy, Substance Abuse and Prevention Services, How to File a Complaint/Report an Incident	
AlcoholEdu Ongoing Prevention	September 2022 – July 2023 (Annually)	ONLINE (Web-based alcohol/other drug education/prevention training)	Awareness and Prevention Training for All Students	Alcohol, Marijuana, and prescription drug usage
Sexual Assault Prevention: Ongoing	September 2022 – July 2023 (Annually)	ONLINE (Web-based sexual violence prevention training)	Awareness and Prevention Training for All Students	National studies document the correlation between both areas of sexual misconduct and alcohol/drug use DoV, DaV, SA, S, SH
Awareness of Alcohol	Annually throughout the year (Annually)	PantherFest Spring Fling PCC Social Media posts Resources included in printed campus FYI News Large posters displayed in PCC Health Clinic common display area	Awareness and education opportunity	Alcohol use and abuse; treatment
Awareness of Marijuana	Annually throughout the year	PantherFest Spring Fling PCC Social Media posts Resources included in printed campus FYI News Large posters displayed in PCC Health Clinic common display area	Awareness and education opportunity	Marijuana use and abuse; treatment
Awareness of heroin	Annually throughout the year	Large posters displayed in PCC Health Clinic common display area	Awareness and education opportunity	Heroin use and abuse; treatment
Awareness of Prescription Drugs	Annually throughout the year	Large posters displayed in PCC Health Clinic common display area	Awareness and education opportunity	Drug use and abuse; treatment
Online New Student Orientation (NSO)	August 2022 November 2022 (for Spring 2023) Summer 2023 (Annually)	ONLINE New Student Orientation	References the Vector Solutions (formerly EVERFI) AlcoholEdu Ongoing Prevention	Sexual Misconduct / Title IX, Alcohol & other Drug awareness & education

Any area underlined is a hyperlink which will direct you to a website.

			and Sexual Assault Prevention: Ongoing Online NSO also includes the link to the PCC Title IX webpage or https://pueblocc.edu/Title-IX	
--	--	--	---	--

*DoV means Domestic Violence, DaV means Dating Violence, SA means Sexual Assault and S means Stalking, SH means Sexual Harassment

The College offered the following **primary prevention and awareness programs for all new and returning employees** in 2022-2023:

<u>Name of Program</u>	<u>Date Held</u>	<u>Location Held</u>	<u>Complied with Program Requirements</u>	<u>Which Prohibited Behavior Covered?*</u>
2023 CCCS Mandatory Training (All employees)	February – June 2023 (will be required of new hires after June)	Online learning modules	Prevention and awareness education	DoV, DaV, SA, S, SH
CCCS Diversity, Equity & Inclusion Training (Title IX in Higher Education)	Ongoing for new hires	Online learning modules	Prevention and awareness education	DoV, DaV, SA, S, SH
PCC Campus Security Authority Training	Annual for designated employees	Online learning module	Notification and reporting requirements	Title IX and Civil Rights violation reporting
New Employee Orientation, discuss Board Policy and protocols related to a Drug-Free Campus	Ongoing for new hires	In-person presentation	Prevention and awareness education; possible testing; required notification	The use of drugs and alcohol in the workplace, to include Federal restrictions pertaining to marijuana

*DoV means Domestic Violence, DaV means Dating Violence, SA means Sexual Assault and S means Stalking, SH means Sexual Harassment

The College offered the following **ongoing awareness and prevention programs** for returning **students** in 2022-2023:

<u>Name of Program</u>	<u>Date Held</u>	<u>Location Held</u>	<u>Complied with Program Requirements</u>	<u>Which Prohibited Behavior Covered?*</u>
Campus-wide Marijuana statement	Annually – Spring, Summer, and Fall Semesters after census	Campus Policy	Educating and Awareness notification to all campus	Marijuana Usage on campus
Emails sent to all student staff and faculty.	Annually – Spring, Summer, and Fall Semesters after census	Campus Policy	Notification of where to find DAAPP	All drug and alcohol usage
Emails sent to all student staff and faculty.	Annually – Spring, Summer, and Fall Semesters after census	Campus Policy	Notification Biennial Report, Student Handbook, Annual Security Report, Drug-Free Work Place Document, Drug Alcohol	All drug and alcohol usage, prohibited behavior outlined in the student handbook

Any area underlined is a hyperlink which will direct you to a website.

			and Awareness Policy, Substance Abuse and Prevention Services, How to File a Complaint/Report an Incident	
AlcoholEdu Ongoing Prevention	September 2022 – July 2023 (Annually)	ONLINE (Web-based alcohol/other drug education/prevention training)	Awareness and Prevention Training for All Students	Alcohol, Marijuana, and prescription drug usage
Sexual Assault Prevention: Ongoing	September 2022 – July 2023 (Annually)	ONLINE (Web-based sexual violence prevention training)	Awareness and Prevention Training for All Students	National studies document the correlation between both areas of sexual misconduct and alcohol/drug use DoV, DaV, SA, S, SH
Awareness of Alcohol	Annually throughout the year (Annually)	PantherFest Spring Fling PCC Social Media posts Resources included in printed campus FYI News Large posters displayed in PCC Health Clinic common display area	Awareness and education opportunity	Alcohol use and abuse; treatment
Awareness of Marijuana	Annually throughout the year	PantherFest Spring Fling PCC Social Media posts Resources included in printed campus FYI News Large posters displayed in PCC Health Clinic common display area	Awareness and education opportunity	Marijuana use and abuse; treatment
Awareness of heroin	Annually throughout the year	Large posters displayed in PCC Health Clinic common display area	Awareness and education opportunity	Heroin use and abuse; treatment
Awareness of Prescription Drugs	Annually throughout the year	Large posters displayed in PCC Health Clinic common display area	Awareness and education opportunity	Drug use and abuse; treatment
Online New Student Orientation (NSO) is open and accessible to returning students	August 2022 November 2022 (for Spring 2023) Summer 2023 (Annually)	ONLINE New Student Orientation	References Vector Solutions (formerly EVERFI) AlcoholEdu Ongoing Prevention and Sexual Assault Prevention: Ongoing	PCC Title IX webpage or https://pueblocc.edu/Title-IX

Any area underlined is a hyperlink which will direct you to a website.

Some returning students review this resource to “remind” themselves of available PCC resources			Online NSO also includes the link to the PCC Title IX webpage or https://pueblocc.edu/Title-IX	
--	--	--	--	--

*DoV means Domestic Violence, DaV means Dating Violence, SA means Sexual Assault and S means Stalking, SH means Sexual Harassment

Since the state of Colorado passed legislation legalizing the recreational use of marijuana, the College has found an increase in the number of students on campus who smell of marijuana (not a Student Code of Conduct violation) and who may be under the influence of marijuana (a Student Code of Conduct violation), though the number of incidents regarding the possession of marijuana (violation) have decreased. The College recognizes a need to increase student awareness of the potential dangers of marijuana usage and will develop an awareness program for all PCC students in 2022-2023.

During the 2021-2022 academic year, the Colorado Community College System mandated a COVID-19 testing policy that PCC had to adopt in fall 2021 and impacted all students and employees. During this testing policy and policy implemented by the host medical provider at the campus clinic, the campus clinic staffing model was impacted and resulted in the PCC employed staff member obtaining a new opportunity elsewhere on campus, the PCC position eliminated, and the health focused educational/prevention programming for PCC negatively impacted by the staffing model.

This elimination of the staff position in the health clinic continues to negatively impact the institution and continues through the 2022-2023 academic year. Despite the staffing changes outlined above, educational/prevention programming focused on alcohol/other drug education/prevention and sexual misconduct/Title IX education and prevention were provided via programming outlined in the above charts for primary and on-going education/prevention programming.

Sex Offense Policy Statement

(Please see Appendix C (below) for a complete listing of policies and procedures, including definitions and specific training and awareness programs that the College provided for its students and employees.)

For the 2022-2023 academic year, PCC contracted with a company named Vector Solutions (formerly EVERFI) to offer online awareness and prevention training for all students (new and returning), with an emphasis on by-stander training, dating violence, domestic violence, sexual assault, stalking, and other forms of sexual misconduct. Vector Solution’s online Sexual Misconduct Prevention Ongoing online student course, fulfilled compliance expectations, and encourage completion of the course (due to the shortened length). Additionally, the AlcoholEdu Ongoing Prevention (covering alcohol and other drugs education/prevention) was co-launched with the Sexual Misconduct Prevention: Ongoing course as there are national studies that document the correlation between both areas of sexual misconduct and alcohol/drug use. These courses were co-launched in the fall 2022 to all students, the spring 2023 semesters to all students that were new to PCC, and summer 2023 to all students that were new to PCC.

PCC focuses on ways to decrease perpetration of dating violence, sexual assault, and stalking and promotes victim empowerment via the promotion of PCC’s Domestic Violence and Sexual Assault Prevention [webpage](#) or www.pueblocc.edu/dvp programming, training, and by various means outlined below in the charts.

The College offered the following **primary prevention and awareness programs for incoming students** in 2022-2023:

<u>Name of Program</u>	<u>Date Held</u>	<u>Location Held</u>	<u>Complied with Program Requirements</u>	<u>Which Prohibited Behavior Covered? *</u>
Campus-wide Marijuana statement	Annually – Spring, Summer, and Fall Semesters after census	Campus Policy	Educating and Awareness notification to all campus	Marijuana Usage on campus

Any area underlined is a hyperlink which will direct you to a website.

Emails sent to all student staff and faculty.	Annually – Spring, Summer, and Fall Semesters after census	Campus Policy	Notification of where to find DAAPP	All drug and alcohol usage
Emails sent to all student staff and faculty.	Annually – Spring, Summer, and Fall Semesters after census	Campus Policy	Notification Biennial Report, Student Handbook, Annual Security Report, Drug-Free Work Place Document, Drug Alcohol and Awareness Policy, Substance Abuse and Prevention Services, How to File a Complaint/Report an Incident	All drug and alcohol usage, prohibited behavior outlined in the student handbook
AlcoholEdu Ongoing Prevention	September 2022 – July 2023 (Annually)	ONLINE (Web-based alcohol/other drug education/prevention training)	Awareness and Prevention Training for All Students	Alcohol, Marijuana, and prescription drug usage
Sexual Assault Prevention: Ongoing	September 2022 – July 2023 (Annually)	ONLINE (Web-based sexual violence prevention training)	Awareness and Prevention Training for All Students	National studies document the correlation between both areas of sexual misconduct and alcohol/drug use DoV, DaV, SA, S, SH
Diversity, Equity, and Inclusion Awareness	September 2022 – July 2023 (Annually)	ONLINE (Web-based diversity, equity, and inclusion awareness training)	Awareness and Prevention Training for All Students	Increased knowledge and awareness of topics on diversity, equity, and inclusion to help prevent concerns for discrimination, harassment, and anticipate the impact of stereotypes, microaggressions, and exclusionary behavior
Awareness of Alcohol	Annually throughout the year (Annually)	PantherFest Spring Fling PCC Social Media posts Resources included in printed campus FYI News Large posters displayed in PCC Health Clinic common display area	Awareness and education opportunity	Alcohol use and abuse; treatment
Awareness of Marijuana	Annually throughout the year	PantherFest Spring Fling PCC Social Media posts Resources included in printed campus FYI News	Awareness and education opportunity	Marijuana use and abuse; treatment

Any area underlined is a hyperlink which will direct you to a website.

		Large posters displayed in PCC Health Clinic common display area		
Awareness of heroin	Annually throughout the year	Large posters displayed in PCC Health Clinic common display area	Awareness and education opportunity	Heroin use and abuse; treatment
Awareness of Prescription Drugs	Annually throughout the year	Large posters displayed in PCC Health Clinic common display area	Awareness and education opportunity	Drug use and abuse; treatment
PCC Social Media Posts & Inclusion in PCC FYI News	Annually throughout 2022 - 2023 September 2022 April 2023	Social Media Posts & Inclusion in PCC FYI News	Continued prevention educational opportunities and support for All Students	National Suicide Prevention Month Sexual Assault Awareness Month SA, S, & SH National Alcohol Awareness & Prevention Month
Online New Student Orientation (NSO) is open and accessible to returning students Some returning students review this resource to “remind” themselves of available PCC resources	August 2022 November 2022 (for Spring 2023) Summer 2023 (Annually)	ONLINE New Student Orientation	References Vector Solutions (formerly EVERFI) AlcoholEdu Ongoing Prevention and Sexual Assault Prevention: Ongoing Online NSO also includes the link to the PCC Title IX webpage or https://pueblocc.edu/Title-IX	PCC Title IX webpage or https://pueblocc.edu/Title-IX

*DoV means Domestic Violence, DaV means Dating Violence, SA means Sexual Assault and S means Stalking, SH means Sexual Harassment

The College offered the following **primary prevention and awareness programs for all new and returning employees in 2022-2023**:

<u>Name of Program</u>	<u>Date Held</u>	<u>Location Held</u>	<u>Complied with Program Requirements</u>	<u>Which Prohibited Behavior Covered? *</u>
2023 CCCS Mandatory Training (All employees)	February – June 2023 (will be required of new hires after June)	Online learning modules	Prevention and awareness education	DoV, DaV, SA, S, SH
CCCS Diversity, Equity & Inclusion Training (Title IX in Higher Education)	Ongoing for new hires	Online learning modules	Prevention and awareness education	DoV, DaV, SA, S, SH

Any area underlined is a hyperlink which will direct you to a website.

PCC Campus Security Authority Training	Annual for designated employees	Online learning module	Notification and reporting requirements	Title IX and Civil Rights violation reporting
New Employee Orientation, discuss Board Policy and protocols related to a Drug-Free Campus	Ongoing for new hires	In-person presentation	Prevention and awareness education; possible testing; required notification	The use of drugs and alcohol in the workplace, to include Federal restrictions pertaining to marijuana

*DoV means Domestic Violence, DaV means Dating Violence, SA means Sexual Assault and S means Stalking, SH means Sexual Harassment

The College offered the following **ongoing awareness and prevention programs** for returning **students** in 2022-2023.

<u>Name of Program</u>	<u>Date Held</u>	<u>Location Held</u>	<u>Complied with Program Requirements</u>	<u>Which Prohibited Behavior Covered? *</u>
Campus-wide Marijuana statement	Annually – Spring, Summer, and Fall Semesters after census	Campus Policy	Educating and Awareness notification to all campus	Marijuana Usage on campus
Emails sent to all student staff and faculty.	Annually – Spring, Summer, and Fall Semesters after census	Campus Policy	Notification of where to find DAAPP	All drug and alcohol usage
Emails sent to all student staff and faculty.	Annually – Spring, Summer, and Fall Semesters after census	Campus Policy	Notification Biennial Report, Student Handbook, Annual Security Report, Drug-Free Work Place Document, Drug Alcohol and Awareness Policy, Substance Abuse and Prevention Services, How to File a Complaint/Report an Incident	All drug and alcohol usage, prohibited behavior outlined in the student handbook
AlcoholEdu Ongoing Prevention	September 2022 – July 2023 (Annually)	ONLINE (Web-based alcohol/other drug education/prevention training)	Awareness and Prevention Training for All Students	Alcohol, Marijuana, and prescription drug usage
Sexual Assault Prevention: Ongoing	September 2022 – July 2023 (Annually)	ONLINE (Web-based sexual violence prevention training)	Awareness and Prevention Training for All Students	National studies document the correlation between both areas of sexual misconduct and alcohol/drug use DoV, DaV, SA, S, SH
Diversity, Equity, and Inclusion Awareness	September 2022 – July 2023 (Annually)	ONLINE (Web-based diversity, equity, and inclusion awareness training)	Awareness and Prevention Training for All Students	Increased knowledge and awareness of topics on diversity, equity, and inclusion to help prevent concerns for discrimination, harassment, and anticipate the impact of stereotypes,

Any area underlined is a hyperlink which will direct you to a website.

				microaggressions, and exclusionary behavior
Awareness of Alcohol	Annually throughout the year (Annually)	PantherFest Spring Fling PCC Social Media posts Resources included in printed campus FYI News Large posters displayed in PCC Health Clinic common display area	Awareness and education opportunity	Alcohol use and abuse; treatment
Awareness of Marijuana	Annually throughout the year	PantherFest Spring Fling PCC Social Media posts Resources included in printed campus FYI News Large posters displayed in PCC Health Clinic common display area	Awareness and education opportunity	Marijuana use and abuse; treatment
Awareness of heroin	Annually throughout the year	Large posters displayed in PCC Health Clinic common display area	Awareness and education opportunity	Heroin use and abuse; treatment
Awareness of Prescription Drugs	Annually throughout the year	Large posters displayed in PCC Health Clinic common display area	Awareness and education opportunity	Drug use and abuse; treatment
PCC Social Media Posts & Inclusion in PCC FYI News	Annually throughout 2022 -2023 September 2022 April 2023	Social Media Posts & Inclusion in PCC FYI News	Continued prevention educational opportunities and support for All Students	National Suicide Prevention Month Sexual Assault Awareness Month SA, S, & SH National Alcohol Awareness & Prevention Month
Online New Student Orientation (NSO) is open and accessible to returning students Some returning students review this resource to “remind” themselves of	August 2022 November 2022 (for Spring 2023) Summer 2023 (Annually)	ONLINE New Student Orientation	References Vector Solutions (formerly EVERFI) AlcoholEdu Ongoing Prevention and Sexual Assault Prevention: Ongoing Online NSO also includes the link to the PCC Title IX webpage or https://pueblocc.edu/Title-IX	PCC Title IX webpage or https://pueblocc.edu/Title-IX

Any area underlined is a hyperlink which will direct you to a website.

available PCC resources				
----------------------------	--	--	--	--

*DoV means Domestic Violence, DaV means Dating Violence, SA means Sexual Assault and S means Stalking, SH means Sexual Harassment

Disclosure of Results of Disciplinary Proceedings Policy Statement

Pueblo Community College, upon the request of the alleged victim or if the alleged victim is deceased the next of kin of such victim shall be treated as the alleged victim and will disclose the results of disciplinary proceeding conducted by the College against a student who is the alleged perpetrator of any crime of violence or sex offense. Requests for this information are to be made to the office of the Vice President of Student Success or to the PCC Police Department.

Policy for Reporting the Annual Disclosure of Crime Statistics Policy Statement

The crime statistics listed in this document are for crimes reported within each calendar year (January 1 to December 31) and are obtained through a variety of sources. In addition to crimes reported to the PCC Police Department data was also solicited from the Pueblo County Sheriff's Office and the Pueblo Police Department in an effort to collect crime data for the Pueblo Campus. Information was also solicited from the Cañon City Police Department for the Fremont Campus, the Durango Police Department for the PCC Southwest Site (Durango), the Bayfield Police Department for the PCC Southwest Site (Bayfield), and the Montezuma County Sheriff's Office for the PCC Southwest Campus (Mancos). This data includes crimes that occurred on public properties around the campuses/sites as per the Clery Act Definitions (which can be found in Appendix C of this report), as well as any crimes to which they responded to on the campuses which were not previously report to the PCC Police Department. Finally, Clery reportable crime statistics that were reported to Campus Security Authorities (CSAs) at all campuses/sites were include in this report.

Statement on Unfounded Crimes

Additionally, this ASR document discloses the total number of crimes reported that were unfounded and subsequently withheld from the crime statistics in this document. An unfounded crime is a reported crime withheld from the statistics due to a full investigation and examination of evidence by law enforcement which determines that the crime is false or baseless.

Crime Statistics Information

REPORT OF CRIMINAL OFFENSES

Pueblo Campus

Offense (Includes attempts)	2020				2021			
	On Campus	Non-Campus	Public Property	Unfounded Cases	On Campus	Non-Campus	Public Property	Unfounded Cases
Murder and Non-Negligent Manslaughter	0	0	0	0	0	0	0	0
Negligent Manslaughter	0	0	0	0	0	0	0	0
Rape	0	0	0	0	0	0	0	0
Fondling	0	0	0	0	0	0	0	0
Sex Offenses	0	0	0	0	0	0	0	0
Incest	0	0	0	0	0	0	0	0
Statutory Rape	0	0	0	0	1	0	0	0
Robbery	0	0	0	0	0	0	0	0
Aggravated Assault	0	0	0	0	0	0	0	0
Burglary	1	0	0	0	1	0	0	0
Motor Vehicle	0	0	0	0	1	0	0	0
Arson	0	0	0	0	0	0	0	0
VAWA								
Domestic Violence	0	0	0	0	0	0	0	0
Dating Violence	0	0	0	0	0	0	0	0
Stalking	0	0	0	0	0	0	0	0
Arrests Made								
Weapons: carrying, possessing, etc.	0	0	0	0	0	0	0	0
Drug Abuse Violations	0	0	0	0	0	0	0	0
Liquor Law Violations	0	0	0	0	0	0	0	0
Referrals for Student Disciplinary								
Weapons: carrying, possessing, etc.	0	0	0	0	0	0	0	0
Drug Abuse Violations	0	0	0	0	0	0	0	0
Liquor Law Violations	0	0	0	0	0	0	0	0
Hate Crimes								
Murder and Non-Negligent Manslaughter	0	0	0	0	0	0	0	0
Rape	0	0	0	0	0	0	0	0
Fondling	0	0	0	0	0	0	0	0
Incest	0	0	0	0	0	0	0	0
Statutory Rape	0	0	0	0	0	0	0	0
Robbery	0	0	0	0	0	0	0	0
Aggravated Assault	0	0	0	0	0	0	0	0
Burglary	0	0	0	0	0	0	0	0
Motor Vehicle Theft	0	0	0	0	0	0	0	0

Any area underlined is a hyperlink which will direct you to a website.

Offense (Includes attempts)	2020				2021			
	On Campus	Non-Campus	Public Property	Unfounded Cases	On Campus	Non-Campus	Public Property	Unfounded Cases
Hate Crimes (Cont)								
Arson	0	0	0	0	0	0	0	0
Simple Assault	0	0	0	0	0	0	0	0
Larceny-theft	0	0	0	0	0	0	0	0
Intimidation	0	0	0	0	0	0	0	0
Destruction/damage/vandalism of property	0	0	0	0	0	0	0	0

Offense (Includes attempts)	2022			
	On Campus	Non-Campus	Public Property	Unfounded Cases
Murder and Non-Negligent Manslaughter	0	0	0	0
Negligent Manslaughter	0	0	0	0
Rape	0	0	0	0
Fondling	0	0	0	0
Sex Offenses	0	0	0	0
Incest	0	0	0	0
Statutory Rape	0	0	0	0
Robbery	0	0	0	0
Aggravated Assault	0	0	0	0
Burglary	1	0	0	0
Motor Vehicle	2	0	0	0
Arson	0	0	0	0
VAWA				
Domestic Violence	0	0	0	0
Dating Violence	0	0	0	0
Stalking	0	0	0	0
Arrests Made				
Weapons: carrying, possessing, etc.	0	0	0	0
Drug Abuse Violations	0	0	0	0
Liquor Law Violations	0	0	0	0
Referrals for Student Disciplinary				
Weapons: carrying, possessing, etc.	0	0	0	0
Drug Abuse Violations	0	0	0	0
Liquor Law Violations	0	6	0	0
Hate Crimes				
Murder and Non-Negligent Manslaughter	0	0	0	0

Any area underlined is a hyperlink which will direct you to a website.

Offense (Includes attempts)	2022				
	Hate Crimes (Cont)	On Campus	Non-Campus	Public Property	Unfounded Cases
Rape		0	0	0	0
Fondling		0	0	0	0
Incest		0	0	0	0
Statutory Rape		0	0	0	0
Robbery		0	0	0	0
Aggravated Assault		0	0	0	0
Burglary		0	0	0	0
Motor Vehicle Theft		0	0	0	0
Arson		0	0	0	0
Simple Assault		0	0	0	0
Larceny-theft		0	0	0	0
Intimidation		0	0	0	0
Destruction/damage/vandalism of property		0	0	0	0

Reported Hate Crimes – with bias factor	2020				2021			
	On Campus	Non-Campus	Public Property	Unfounded	On Campus	Non-Campus	Public Property	Unfounded
Race	0	0	0	0	0	0	0	0
Gender	0	0	0	0	0	0	0	0
Gender Identity	0	0	0	0	0	0	0	0
Religion	0	0	0	0	0	0	0	0
Sexual Orientation	0	0	0	0	0	0	0	0
Ethnicity	0	0	0	0	0	0	0	0
National Origin	0	0	0	0	0	0	0	0
Disability	0	0	0	0	0	0	0	0

Reported Hate Crimes – with bias factor	2022			
	On Campus	Non-Campus	Public Property	Unfounded Cases
Race	0	0	0	0
Gender				
Gender Identity	0	0	0	0
Religion	0	0	0	0
Sexual Orientation	0	0	0	0
Ethnicity	0	0	0	0
National Origin	0	0	0	0
Disability	0	0	0	0

- “Public Property” refers to all public property including thoroughfares, streets, sidewalks, and parking facilities that are within the campus or immediately adjacent to and accessible from the campus.
- “On Campus” refers to any building or property owned or controlled by an institution within the same reasonably contiguous geographic area and is used by the institution in direct support of, or in a manner related to, the institution’s educational purposes and that is frequently used by students and support personnel.
- “Non-Campus Property” any building or property owned or controlled by an institution that is used in direct support of, or in relation to, the institution’s educational purposes, is frequently used by students, and is not within the

Any area underlined is a hyperlink which will direct you to a website.

same reasonably contiguous geographic area of the institution. Non-campus property was added for 2015 to include PCC classes being held at St. Mary Corwin Hospital and the Downtown Studio Campus.

- Pueblo Community College does not own or operate any campus housing.
- Data on Referrals for Student Disciplinary Action are obtained through a coordinated effort with the PCC Police Department and the Vice President of Student Success.
- PCC resumed face-to-face programming but had limitations as it pertains to PCC's safety pandemic protocols (testing policy, masks, physical distancing, quarantining, etc.) in 2022 – 2023 academic year.

REPORT OF CRIMINAL OFFENSES
Fremont Campus

Offense (Includes attempts)	2020				2021			
	On Campus	Non-Campus	Public Property	Unfounded Cases	On Campus	Non-Campus	Public Property	Unfounded Cases
Murder and Non-Negligent Manslaughter	0	0	0	0	0	0	0	0
Negligent Manslaughter	0	0	0	0	0	0	0	0
Rape	0	0	0	0	0	0	0	0
Fondling	0	0	0	0	0	0	0	0
Sex Offenses	0	0	0	0	0	0	0	0
Incest	0	0	0	0	0	0	0	0
Statutory Rape	0	0	0	0	0	0	0	0
Robbery	0	0	0	0	0	0	0	0
Aggravated Assault	0	0	0	0	0	0	0	0
Burglary	0	0	0	0	0	0	0	0
Motor Vehicle	0	0	0	0	0	0	0	0
Arson	0	0	0	0	0	0	0	0
VAWA								
Domestic Violence	0	0	0	0	0	0	0	0
Dating Violence	0	0	0	0	0	0	0	0
Stalking	0	0	0	0	0	0	0	0
Arrests Made								
Weapons: carrying, possessing, etc.	0	0	0	0	0	0	0	0
Drug Abuse Violations	0	0	0	0	0	0	0	0
Liquor Law Violations	0	0	0	0	0	0	0	0
Referrals for Student Disciplinary								
Weapons: carrying, possessing, etc.	0	0	0	0	0	0	0	0
Drug Abuse Violations	0	0	0	0	0	0	0	0
Liquor Law Violations	0	0	0	0	0	0	0	0
Hate Crimes								
Murder and Non-Negligent Manslaughter	0	0	0	0	0	0	0	0
Rape	0	0	0	0	0	0	0	0
Fondling	0	0	0	0	0	0	0	0
Incest	0	0	0	0	0	0	0	0
Statutory Rape	0	0	0	0	0	0	0	0
Robbery	0	0	0	0	0	0	0	0
Aggravated Assault	0	0	0	0	0	0	0	0
Burglary	0	0	0	0	0	0	0	0
Motor Vehicle Theft	0	0	0	0	0	0	0	0
Arson	0	0	0	0	0	0	0	0
Simple assault	0	0	0	0	0	0	0	0

Any area underlined is a hyperlink which will direct you to a website.

Offense (Includes attempts)	2020				2021			
	On Campus	Non-Campus	Public Property	Unfounded Cases	On Campus	Non-Campus	Public Property	Unfounded Cases
Hate Crimes (Cont)								
Larceny-theft	0	0	0	0	0	0	0	0
Intimidation	0	0	0	0	0	0	0	0
Destruction/damage/vandalism of property	0	0	0	0	0	0	0	0

Offense (Includes attempts)	2022			
	On Campus	Non-Campus	Public Property	Unfounded Cases
Murder and Non-Negligent Manslaughter	0	0	0	0
Negligent Manslaughter	0	0	0	0
Rape	0	0	0	0
Fondling	0	0	0	0
Sex Offenses	0	0	0	0
Incest	0	0	0	0
Statutory Rape	0	0	0	0
Robbery	0	0	0	0
Aggravated Assault	0	0	0	0
Burglary	0	0	0	0
Motor Vehicle	0	0	0	0
Arson	0	0	0	0
VAWA				
Domestic Violence	0	0	0	0
Dating Violence	0	0	0	0
Stalking	0	0	0	0
Arrests Made				
Weapons: carrying, possessing, etc.	0	0	0	0
Drug Abuse Violations	0	0	0	0
Liquor Law Violations	0	0	0	0
Referrals for Student Disciplinary				0
Weapons: carrying, possessing, etc.	0	0	0	0
Drug Abuse Violations	0	0	0	0
Liquor Law Violations	0	0	0	0
Hate Crimes				0
Murder and Non-Negligent Manslaughter	0	0	0	0
Rape	0	0	0	0
Fondling	0	0	0	0
Incest	0	0	0	0
Statutory Rape	0	0	0	0
Robbery	0	0	0	0
Aggravated Assault	0	0	0	0
Burglary	0	0	0	0
Motor Vehicle Theft	0	0	0	0

Any area underlined is a hyperlink which will direct you to a website.

Offense (Includes attempts)	2022				
	Hate Crimes (Cont)	On Campus	Non-Campus	Public Property	Unfounded Cases
Arson		0	0	0	0
Simple Assault		0	0	0	0
Larceny-theft		0	0	0	0
Intimidation		0	0	0	0
Destruction/damage/vandalism of property		0	0	0	0

Reported Hate Crimes – with bias factor	2020				2021			
	On Campus	Non-Campus	Public Property	Unfounded	On Campus	Non-Campus	Public Property	Unfounded
Race	0	0	0	0	0	0	0	0
Gender	0	0	0	0	0	0	0	0
Gender Identity	0	0	0	0	0	0	0	0
Religion	0	0	0	0	0	0	0	0
Sexual Orientation	0	0	0	0	0	0	0	0
Ethnicity	0	0	0	0	0	0	0	0
National Origin	0	0	0	0	0	0	0	0
Disability	0	0	0	0	0	0	0	0

Reported Hate Crimes – with bias factor	2022			
	On Campus	Non-Campus	Public Property	Unfounded Cases
Race	0	0	0	0
Gender				
Gender Identity	0	0	0	0
Religion	0	0	0	0
Sexual Orientation	0	0	0	0
Ethnicity	0	0	0	0
National Origin	0	0	0	0
Disability	0	0	0	0

- “Public Property” refers to all public property including thoroughfares, streets, sidewalks, and parking facilities that are within the campus or immediately adjacent to and accessible from the campus.
- “On Campus” refers to any building or property owned or controlled by an institution within the same reasonably contiguous geographic area and is used by the institution in direct support of, or in a manner related to, the institution’s educational purposes and that is frequently used by students and support personnel.
- Pueblo Community College does not own or operate any campus housing.
- Pueblo Community College does not have any non-campus properties as part of the Fremont Campus.
- Data on Referrals for Student Disciplinary Action are obtained through a coordinated effort with the PCC Police Department and the Vice President of Student Success.
- PCC resumed face-to-face programming but had limitations as it pertains to PCC’s safety pandemic protocols (testing policy, masks, physical distancing, quarantining, etc.) in 2022 – 2023 academic year.

Any area underlined is a hyperlink which will direct you to a website.

REPORT OF CRIMINAL OFFENSES
PCC Southwest Site (Durango)

Offense (Includes attempts)	2020				2021			
	On Campus	Non-Campus	Public Property	Unfounded Cases	On Campus	Non-Campus	Public Property	Unfounded Cases
Murder and Non-Negligent Manslaughter	0	0	0	0	0	0	0	0
Negligent Manslaughter	0	0	0	0	0	0	0	0
Rape	0	0	0	0	0	0	0	0
Fondling	0	0	0	0	0	0	0	0
Sex Offenses	0	0	0	0	0	0	0	0
Incest	0	0	0	0	0	0	0	0
Statutory Rape	0	0	0	0	0	0	0	0
Robbery	0	0	0	0	0	0	0	0
Aggravated Assault	0	0	0	0	0	0	0	0
Burglary	0	0	0	0	0	0	0	0
Motor Vehicle	0	0	0	0	0	0	0	0
Arson	0	0	0	0	0	0	0	0
VAWA								
Domestic Violence	0	0	0	0	0	0	0	0
Dating Violence	0	0	0	0	0	0	0	0
Stalking	0	0	0	0	0	0	0	0
Arrests Made								
Weapons: carrying, possessing, etc.	0	0	0	0	0	0	0	0
Drug Abuse Violations	0	0	0	0	0	0	0	0
Liquor Law Violations	0	0	0	0	0	0	0	0
Referrals for Student Disciplinary								
Weapons: carrying, possessing, etc.	0	0	0	0	0	0	0	0
Drug Abuse Violations	0	0	0	0	0	0	0	0
Liquor Law Violations	0	0	0	0	0	0	0	0
Hate Crimes								
Murder and Non-Negligent Manslaughter	0	0	0	0	0	0	0	0
Rape	0	0	0	0	0	0	0	0
Fondling	0	0	0	0	0	0	0	0
Incest	0	0	0	0	0	0	0	0
Statutory Rape	0	0	0	0	0	0	0	0
Robbery	0	0	0	0	0	0	0	0
Aggravated Assault	0	0	0	0	0	0	0	0
Burglary	0	0	0	0	0	0	0	0
Motor vehicle theft	0	0	0	0	0	0	0	0

Any areas underlined is a hyperlink which will direct you to a website.

Offense (Includes attempts)	2020				2021			
	On Campus	Non-Campus	Public Property	Unfounded Cases	On Campus	Non-Campus	Public Property	Unfounded Cases
Hate Crimes (Cont)								
Arson	0	0	0	0	0	0	0	0
Simple Assault	0	0	0	0	0	0	0	0
Larceny-theft	0	0	0	0	0	0	0	0
Intimidation	0	0	0	0	0	0	0	0
Destruction/damage/vandalism of property	0	0	0	0	0	0	0	0

Offense (Includes attempts)	2022			
	On Campus	Non-Campus	Public Property	Unfounded Cases
Murder and Non-Negligent Manslaughter	0	0	0	0
Negligent Manslaughter	0	0	0	0
Rape	0	0	0	0
Fondling	0	0	0	0
Sex Offenses	0	0	0	0
Incest	0	0	0	0
Statutory Rape	0	0	0	0
Robbery	0	0	0	0
Aggravated Assault	0	0	0	0
Burglary	0	0	0	0
Motor Vehicle	0	0	0	0
Arson	0	0	0	0
VAWA				
Domestic Violence	0	0	0	0
Dating Violence	0	0	0	0
Stalking	0	0	0	0
Arrests Made				
Weapons: carrying, possessing, etc.	0	0	0	0
Drug Abuse Violations	0	0	0	0
Liquor Law Violations	0	0	0	0
Referrals for Student Disciplinary				
Weapons: carrying, possessing, etc.	0	0	0	0
Drug Abuse Violations	0	0	0	0
Liquor Law Violations	0	0	0	0
Hate Crimes				
Murder and Non-Negligent Manslaughter	0	0	0	0
Rape	0	0	0	0
Fondling	0	0	0	0
Incest	0	0	0	0

Any areas underlined is a hyperlink which will direct you to a website.

Offense (Includes attempts)	2022				
	Hate Crimes (Cont)	On Campus	Non-Campus	Public Property	Unfounded Cases
Statutory Rape		0	0	0	0
Robbery		0	0	0	0
Aggravated Assault		0	0	0	0
Burglary		0	0	0	0
Motor Vehicle Theft		0	0	0	0
Arson		0	0	0	0
Simple Assault		0	0	0	0
Larceny-theft		0	0	0	0
Intimidation		0	0	0	0
Destruction/damage/vandalism of property		0	0	0	0

Reported Hate Crimes – with bias factor	2020				2021			
	On Campus	Non-Campus	Public Property	Unfounded	On Campus	Non-Campus	Public Property	Unfounded
Race	0	0	0	0	0	0	0	0
Gender	0	0	0	0	0	0	0	0
Gender Identity	0	0	0	0	0	0	0	0
Religion	0	0	0	0	0	0	0	0
Sexual Orientation	0	0	0	0	0	0	0	0
Ethnicity	0	0	0	0	0	0	0	0
National Origin	0	0	0	0	0	0	0	0
Disability	0	0	0	0	0	0	0	0

Reported Hate Crimes – with bias factor	2022			
	On Campus	Non-Campus	Public Property	Unfounded Cases
Race	0	0	0	0
Gender				
Gender Identity	0	0	0	0
Religion	0	0	0	0
Sexual Orientation	0	0	0	0
Ethnicity	0	0	0	0
National Origin	0	0	0	0
Disability	0	0	0	0

- “Public Property” refers to all public property including thoroughfares, streets, sidewalks, and parking facilities that are within the campus or immediately adjacent to and accessible from the campus.
- “On Campus” refers to any building or property owned or controlled by an institution within the same reasonably contiguous geographic area and is used by the institution in direct support of, or in a manner related to, the institution’s educational purposes and that is frequently used by students and support personnel.
- Pueblo Community College does not own or operate any campus housing.
- Pueblo Community College does not have any non-campus properties as part of the PCC Southwest Site.
- Data on Referrals for Student Disciplinary Action are obtained through a coordinated effort with the PCC Police

Any areas underlined is a hyperlink which will direct you to a website.

Department and the Vice President of Student Success.

- PCC resumed face-to-face programming but had limitations as it pertains to PCC's safety pandemic protocols (testing policy, masks, physical distancing, quarantining, etc.) in 2022 – 2023 academic year.

Any areas underlined is a hyperlink which will direct you to a website.

REPORT OF CRIMINAL OFFENSES
PCC Southwest Site (Bayfield)

Offense (Includes attempts)	2020				2021			
	On Campus	Non-Campus	Public Property	Unfounded Cases	On Campus	Non-Campus	Public Property	Unfounded Cases
Murder and Non-Negligent Manslaughter	0	0	0	0	0	0	0	0
Negligent Manslaughter	0	0	0	0	0	0	0	0
Rape	0	0	0	0	0	0	0	0
Fondling	0	0	0	0	0	0	0	0
Sex Offenses	0	0	0	0	0	0	0	0
Incest	0	0	0	0	0	0	0	0
Statutory Rape	0	0	0	0	0	0	0	0
Robbery	0	0	0	0	0	0	0	0
Aggravated Assault	0	0	0	0	0	0	0	0
Burglary	0	0	0	0	0	0	0	0
Motor Vehicle	0	0	0	0	0	0	0	0
Arson	0	0	0	0	0	0	0	0
VAWA								
Domestic Violence	0	0	0	0	0	0	0	0
Dating Violence	0	0	0	0	0	0	0	0
Stalking	0	0	0	0	0	0	0	0
Arrests Made								
Weapons: carrying, possessing, etc.	0	0	0	0	0	0	0	0
Drug Abuse Violations	0	0	0	0	0	0	0	0
Liquor Law Violations	0	0	0	0	0	0	0	0
Referrals for Student Disciplinary								
Weapons: carrying, possessing, etc.	0	0	0	0	0	0	0	0
Drug Abuse Violations	0	0	0	0	0	0	0	0
Liquor Law Violations	0	0	0	0	0	0	0	0
Hate Crimes								
Murder and Non-Negligent Manslaughter	0	0	0	0	0	0	0	0
Rape	0	0	0	0	0	0	0	0
Fondling	0	0	0	0	0	0	0	0
Incest	0	0	0	0	0	0	0	0
Statutory Rape	0	0	0	0	0	0	0	0
Robbery	0	0	0	0	0	0	0	0
Aggravated Assault	0	0	0	0	0	0	0	0
Burglary	0	0	0	0	0	0	0	0
Motor Vehicle Theft	0	0	0	0	0	0	0	0

Any areas underlined is a hyperlink which will direct you to a website.

Offense (Includes attempts)	2020				2021			
	On Campus	Non-Campus	Public Property	Unfounded Cases	On Campus	Non-Campus	Public Property	Unfounded Cases
Hate Crimes (Cont)								
Arson	0	0	0	0	0	0	0	0
Simple Assault	0	0	0	0	0	0	0	0
Larceny-theft	0	0	0	0	0	0	0	0
Intimidation	0	0	0	0	0	0	0	0
Destruction/damage/vandalism of property	0	0	0	0	0	0	0	0

Offense (Includes attempts)	2022			
	On Campus	Non-Campus	Public Property	Unfounded Cases
Murder and Non-Negligent Manslaughter	0	0	0	0
Negligent Manslaughter	0	0	0	0
Rape	0	0	0	0
Fondling	0	0	0	0
Sex Offenses	0	0	0	0
Incest	0	0	0	0
Statutory Rape	0	0	0	0
Robbery	0	0	0	0
Aggravated Assault	0	0	0	0
Burglary	0	0	0	0
Motor Vehicle	0	0	0	0
Arson	0	0	0	0
VAWA				
Domestic Violence	0	0	0	0
Dating Violence	0	0	0	0
Stalking	0	0	0	0
Arrests Made				
Weapons: carrying, possessing, etc.	0	0	0	0
Drug Abuse Violations	0	0	0	0
Liquor Law Violations	0	0	0	0
Referrals for Student Disciplinary				
Weapons: carrying, possessing, etc.	0	0	0	0
Drug Abuse Violations	0	0	0	0
Liquor Law Violations	0	0	0	0

Any areas underlined is a hyperlink which will direct you to a website.

Offense (Includes attempts)	2022			
	Hate Crimes	On Campus	Non-Campus	Public Property
Murder and Non-Negligent Manslaughter	0	0	0	0
Rape	0	0	0	0
Fondling	0	0	0	0
Incest	0	0	0	0
Statutory Rape	0	0	0	0
Robbery	0	0	0	0
Aggravated Assault	0	0	0	0
Burglary	0	0	0	0
Motor Vehicle Theft	0	0	0	0
Arson	0	0	0	0
Simple Assault	0	0	0	0
Larceny-theft	0	0	0	0
Intimidation	0	0	0	0
Destruction/damage/vandalism of property	0	0	0	0

Reported Hate Crimes – with bias factor	2020				2021			
	On Campus	Non-Campus	Public Property	Unfounded	On Campus	Non-Campus	Public Property	Unfounded
Race	0	0	0	0	0	0	0	0
Gender	0	0	0	0	0	0	0	0
Gender Identity	0	0	0	0	0	0	0	0
Religion	0	0	0	0	0	0	0	0
Sexual Orientation	0	0	0	0	0	0	0	0
Ethnicity	0	0	0	0	0	0	0	0
National Origin	0	0	0	0	0	0	0	0
Disability	0	0	0	0	0	0	0	0

Reported Hate Crimes – with bias factor	2022			
	On Campus	Non-Campus	Public Property	Unfounded Cases
Race	0	0	0	0
Gender				
Gender Identity	0	0	0	0
Religion	0	0	0	0
Sexual Orientation	0	0	0	0
Ethnicity	0	0	0	0
National Origin	0	0	0	0
Disability	0	0	0	0

- “Public Property” refers to all public property including thoroughfares, streets, sidewalks, and parking facilities

Any areas underlined is a hyperlink which will direct you to a website.

that are within the campus or immediately adjacent to and accessible from the campus.

- “On Campus” refers to any building or property owned or controlled by an institution within the same reasonably contiguous geographic area and is used by the institution in direct support of, or in a manner related to, the institution’s educational purposes and that is frequently used by students and support personnel.
- Pueblo Community College does not own or operate any campus housing.
- Pueblo Community College does not have any non-campus properties as part of the PCC Southwest Site.
- Data on Referrals for Student Disciplinary Action are obtained through a coordinated effort with the PCC Police Department and the Vice President of Student success.
- PCC resumed face-to-face programming but had limitations as it pertains to PCC’s safety pandemic protocols (testing policy, masks, physical distancing, quarantining, etc.) in 2022 – 2023 academic year.

Any areas underlined is a hyperlink which will direct you to a website.

REPORT OF CRIMINAL OFFENSES
PCC Southwest Campus (Mancos)

Offense (Includes attempts)	2020				2021			
	On Campus	Non-Campus	Public Property	Unfounded Cases	On Campus	Non-Campus	Public Property	Unfounded Cases
Murder and Non-Negligent Manslaughter	0	0	0	0	0	0	0	0
Negligent Manslaughter	0	0	0	0	0	0	0	0
Rape	0	0	0	0	0	0	0	0
Fondling	0	0	0	0	0	0	0	0
Sex Offenses	0	0	0	0	0	0	0	0
Incest	0	0	0	0	0	0	0	0
Statutory Rape	0	0	0	0	0	0	0	0
Robbery	0	0	0	0	0	0	0	0
Aggravated Assault	0	0	0	0	0	0	0	0
Burglary	0	0	0	0	0	0	0	0
Motor Vehicle	0	0	0	0	0	0	0	0
Arson	0	0	0	0	0	0	0	0
VAWA								
Domestic Violence	0	0	0	0	0	0	0	0
Dating Violence	0	0	0	0	0	0	0	0
Stalking	0	0	0	0	0	0	0	0
Arrests Made								
Weapons: carrying, possessing, etc.	0	0	0	0	0	0	0	0
Drug Abuse Violations	0	0	0	0	0	0	0	0
Liquor Law Violations	0	0	0	0	0	0	0	0
Referrals for Student Disciplinary								
Weapons: carrying, possessing, etc.	0	0	0	0	0	0	0	0
Drug Abuse Violations	0	0	0	0	0	0	0	0
Liquor Law Violations	0	0	0	0	0	0	0	0
Hate Crimes								
Murder and Non-Negligent Manslaughter	0	0	0	0	0	0	0	0
Rape	0	0	0	0	0	0	0	0
Fondling	0	0	0	0	0	0	0	0
Incest	0	0	0	0	0	0	0	0
Statutory Rape	0	0	0	0	0	0	0	0
Robbery	0	0	0	0	0	0	0	0
Aggravated Assault	0	0	0	0	0	0	0	0
Burglary	0	0	0	0	0	0	0	0
Motor Vehicle Theft	0	0	0	0	0	0	0	0

Any areas underlined is a hyperlink which will direct you to a website.

Offense (Includes attempts)	2020				2021			
	On Campus	Non-Campus	Public Property	Unfounded Cases	On Campus	Non-Campus	Public Property	Unfounded Cases
Hate Crimes (Cont)								
Arson	0	0	0	0	0	0	0	0
Simple Assault	0	0	0	0	0	0	0	0
Larceny-theft	0	0	0	0	0	0	0	0
Intimidation	0	0	0	0	0	0	0	0
Destruction/damage/vandalism of property	0	0	0	0	0	0	0	0

Offense (Includes attempts)	2022			
	On Campus	Non-Campus	Public Property	Unfounded Cases
Murder and Non-Negligent Manslaughter	0	0	0	0
Negligent Manslaughter	0	0	0	0
Rape	0	0	0	0
Fondling	0	0	0	0
Sex Offenses	0	0	0	0
Incest	0	0	0	0
Statutory Rape	0	0	0	0
Robbery	0	0	0	0
Aggravated Assault	0	0	0	0
Burglary	0	0	0	0
Motor Vehicle	0	0	0	0
Arson	0	0	0	0
VAWA				
Domestic Violence	0	0	0	0
Dating Violence	0	0	0	0
Stalking	0	0	0	0
Arrests Made				
Weapons: carrying, possessing, etc.	0	0	0	0
Drug Abuse Violations	0	0	0	0
Liquor Law Violations	0	0	0	0
Referrals for Student Disciplinary				
Weapons: carrying, possessing, etc.	0	0	0	0
Drug Abuse Violations	0	0	0	0
Liquor Law Violations	0	0	0	0
Hate Crimes	On Campus	Non-Campus	Public Property	Unfounded Cases

Any areas underlined is a hyperlink which will direct you to a website.

Offense (Includes attempts)	2022			
Murder and Non-Negligent Manslaughter	0	0	0	0
Rape	0	0	0	0
Fondling	0	0	0	0
Incest	0	0	0	0
Statutory Rape	0	0	0	0
Robbery	0	0	0	0
Aggravated Assault	0	0	0	0
Burglary	0	0	0	0
Motor Vehicle Theft	0	0	0	0
Arson	0	0	0	0
Simple Assault	0	0	0	0
Larceny-theft	0	0	0	0
Intimidation	0	0	0	0
Destruction/damage/vandalism of property	0	0	0	0

Reported Hate Crimes – with bias factor	2020				2021			
	On Campus	Non-Campus	Public Property	Unfounded	On Campus	Non-Campus	Public Property	Unfounded
Race	0	0	0	0	0	0	0	0
Gender	0	0	0	0	0	0	0	0
Gender Identity	0	0	0	0	0	0	0	0
Religion	0	0	0	0	0	0	0	0
Sexual Orientation	0	0	0	0	0	0	0	0
Ethnicity	0	0	0	0	0	0	0	0
National Origin	0	0	0	0	0	0	0	0
Disability	0	0	0	0	0	0	0	0

Reported Hate Crimes – with bias factor	2022			
	On Campus	Non-Campus	Public Property	Unfounded Cases
Race	0	0	0	0
Gender				
Gender Identity	0	0	0	0
Religion	0	0	0	0
Sexual Orientation	0	0	0	0
Ethnicity	0	0	0	0
National Origin	0	0	0	0
Disability	0	0	0	0

- “Public Property” refers to all public property including thoroughfares, streets, sidewalks, and parking facilities that are within the campus or immediately adjacent to and accessible from the campus.

Any areas underlined is a hyperlink which will direct you to a website.

- “On Campus” refers to any building or property owned or controlled by an institution within the same reasonably contiguous geographic area and is used by the institution in direct support of, or in a manner related to, the institution’s educational purposes and that is frequently used by students and support personnel.
- Pueblo Community College does not own or operate any campus housing.
- Pueblo Community College does not have any non-campus properties as part of the PCC Southwest Campus.
- Data on Referrals for Student Disciplinary Action are obtained through a coordinated effort with the PCC Police Department and Vice President of Student Success.
- PCC resumed face-to-face programming but had limitations as it pertains to PCC’s safety pandemic protocols (testing policy, masks, physical distancing, quarantining, etc.) in 2022 – 2023 academic year.

Any areas underlined is a hyperlink which will direct you to a website.

Fire Safety Report & Missing Student Notification Policy Statement

The Clery Act requires institutions to mandatorily report policies, procedures, and any statistical data related to fire incidents and missing students occurring on or off campus student housing under the jurisdiction of the College.

Pueblo Community College does not offer, own, or control campus housing. Additionally, PCC does not have or offer off-campus locations for recognized student organizations. Recognized student organizations do not own or control any off-campus locations.

APPENDIX A

Colorado Revised Statutes related to this document:

18-8-115. Duty to report a crime - liability for disclosure.

It is the duty of every corporation or person who has reasonable grounds to believe that a crime has been committed to report promptly the suspected crime to law enforcement authorities. Notwithstanding any other provision of the law to the contrary, a corporation or person may disclose information concerning a suspected crime to other persons or corporations for the purpose of giving notice of the possibility that other such criminal conduct may be attempted which may affect the persons or corporations notified. When acting in good faith, such corporation or person shall be immune from any civil liability for such reporting or disclosure. This duty shall exist notwithstanding any other provision of the law to the contrary; except that this section shall not require disclosure of any communication privileged by law.

18-12-214. Authority granted by permit – carrying restrictions.

(1)(a) A permit to carry a concealed handgun authorizes the permittee to carry a concealed handgun in all areas of the state, except as specifically limited in this section. A permit does not authorize the permittee to use a handgun in a manner that would violate a provision of state law. A local government does not have authority to adopt or enforce an ordinance or resolution that would conflict with any provision of this part 2.

(b) A peace officer may temporarily disarm a permittee, incident to a lawful stop of the permittee. The peace officer shall return the handgun to the permittee prior to discharging the permittee from the scene.

(2) A permit issued pursuant to this part 2 does not authorize a person to carry a concealed handgun into a place where the carrying of firearms is prohibited by federal law.

(3) A permit issued pursuant to this part 2 does not authorize a person to carry a concealed handgun onto the real property, or into any improvements erected thereon, of a public elementary, middle, junior high, or high school; except that:

(a) A permittee may have a handgun on the real property of the public school so long as the handgun remains in his or her vehicle and, if the permittee is not in the vehicle, the handgun is in a compartment within the vehicle and the vehicle is locked;

(b) A permittee who is employed or retained by contract by a school district or charter school as a school security officer may carry a concealed handgun onto the real property, or into any improvement erected thereon, of a public elementary, middle, junior high, or high school while the permittee is on duty;

(c) A permittee may carry a concealed handgun on undeveloped real property owned by a school district that is used for hunting or other shooting sports.

(4) A permit issued pursuant to this part 2 does not authorize a person to carry a concealed handgun into a public building at which:

(a) Security personnel and electronic weapons screening devices are permanently in place at each entrance to the building;

(b) Security personnel electronically screen each person who enters the building to determine whether the person is carrying a weapon of any kind; and

(c) Security personnel require each person who is carrying a weapon of any kind to leave the weapon in possession of security personnel while the person is in the building.

(5) Nothing in this part 2 shall be construed to limit, restrict, or prohibit in any manner the existing rights of a private property owner, private tenant, private employer, or private business entity.

(6) The provisions of this section apply to temporary emergency permits issued pursuant to section 18-12-209

18-13-122. Illegal possession or consumption of ethyl alcohol by an underage person - adolescent substance abuse prevention and treatment fund - legislative declaration.

(1) As used in this section, unless the context otherwise requires:

(a) "Establishment" means a business, firm, enterprise, service or fraternal organization, club, institution, entity, group, or residence, and any real property, including buildings and improvements, connected therewith, and shall also include any members, employees, and occupants associated therewith.

(b) "Ethyl alcohol" means any substance which is or contains ethyl alcohol.

(c) "Possession of ethyl alcohol" means that a person has or holds any amount of ethyl alcohol anywhere on his person, or that a person owns or has custody of ethyl alcohol, or has ethyl alcohol within his immediate presence and control.

(d) "Private property" means any dwelling and its curtilage which is being used by a natural person or natural persons for habitation and which is not open to the public and privately-owned real property which is not open to the public. "Private property" shall not include:

(I) Any establishment which has or is required to have a license pursuant to article 46, 47, or 48 of title 12, C.R.S.; or

(II) Any establishment which sells ethyl alcohol or upon which ethyl alcohol is sold;

OR

(III) Any establishment which leases, rents, or provides accommodations to members of the public generally.

(2) Any person under twenty-one years of age who possesses or consumes ethyl alcohol anywhere in the state of Colorado commits illegal possession or consumption of ethyl alcohol by an underage person.

Illegal possession or consumption of ethyl alcohol by an underage person is a strict liability offense.

(I) Upon conviction of a first offense, illegal possession or consumption of ethyl alcohol by an underage person shall be punished by a fine of not more than two hundred fifty dollars. The court, upon sentencing a defendant pursuant to this paragraph (b), may, in addition to any fine, order that the defendant perform up to twenty-four hours of useful public service, subject to the conditions and restrictions of section 18-1.3-507, and may further order that the defendant submit to and complete an alcohol evaluation or assessment, an alcohol education program, or an alcohol treatment program at such defendant's own expense.

(II) Upon conviction of a second offense, illegal possession or consumption of ethyl alcohol by an underage person shall be punished by a fine of not more than five hundred dollars, and the court shall order the defendant to submit to and complete an alcohol evaluation or assessment, an alcohol education program, or an alcohol treatment program, at the defendant's own expense. The court may further order the defendant to perform up to twenty-four hours of useful public service, subject to the conditions and restrictions specified in section 18-1.3-507.

(III) Upon conviction of a third or subsequent offense, illegal possession or consumption of ethyl alcohol by an underage person shall be a class 2 misdemeanor, and the court, in addition to sentencing the defendant pursuant to the provisions of section 18-1.3-501, shall order the defendant to submit to and complete an alcohol evaluation or assessment, an alcohol education program, or an alcohol treatment program, at the defendant's own expense.

(IV) A person convicted of a violation of this section is subject to an additional penalty surcharge of twenty-five dollars that shall be administered to the adolescent substance abuse prevention and treatment fund.

(3) It shall be an affirmative defense to the offense described in subsection (2) of this section that the ethyl alcohol was possessed or consumed by a person less than twenty-one years of age under the following circumstances:

(a) While such person was legally upon private property with the knowledge and consent of the owner or legal possessor of such private property and the ethyl alcohol was possessed or consumed with the consent of his parent or legal guardian who was present during such possession or consumption; or

(b) When the existence of ethyl alcohol in a person's body was due solely to the ingestion of a confectionery which contained ethyl alcohol within the limits prescribed by section 25-5-410 (1) (i) (II), C.R.S.; or the ingestion of any substance which was manufactured, designed, or intended primarily for a purpose other than oral human ingestion; or the ingestion of any substance which was manufactured, designed, or intended solely for medicinal or hygienic purposes; or solely from the ingestion of a beverage which contained less than one-half of one percent of ethyl alcohol by weight.

(c) The person is a student who:

(I) Tastes but does not imbibe an alcohol beverage only while under the direct supervision of an instructor who is at least twenty-one years of age and employed by a post-secondary school;

(II) Is enrolled in a university or a post-secondary school accredited or certified by an agency recognized by the United States department of education, a nationally recognized accrediting agency or association, or the "Private Occupational Education Act of 1981", article 59 of title 12, C.R.S.;

(III) Is participating in a culinary arts, food service, or restaurant management degree program; and (IV) Tastes but does not imbibe the alcohol beverage for instructional purposes as a part of a required course in which the alcohol beverage, except the portion the student tastes, remains under the control of the instructor.

(4) The possession or consumption of ethyl alcohol shall not constitute a violation of this section if such possession or consumption takes place for religious purposes protected by the first amendment to the United States constitution.

An underage person and one or two other persons shall be immune from criminal prosecution under this section if they establish the following:

(a) One of the underage persons called 911 and reported that another underage person was in need of medical assistance due to alcohol consumption;

(b) The underage person who called 911 and, if applicable, one or two other persons acting in concert with the underage person who called 911 provided each of their names to the 911 operator;

(c) The underage person was the first person to make the 911 report; and

(d) The underage person and, if applicable, one or two other persons acting in concert with the underage person who made the 911 call remained on the scene with the underage person in need of medical assistance until assistance arrived and cooperated with medical assistance and law enforcement personnel on the scene.

(5) Prima facie evidence of a violation of subsection (2) of this section shall consist of:

(a) Evidence that the defendant was under the age of twenty-one years and possessed or consumed ethyl alcohol anywhere in this state; or

(b) Evidence that the defendant was under the age of twenty-one years and manifested any of the characteristics commonly associated with ethyl alcohol-intoxication or impairment while present anywhere in this state.

Colorado revised statute 18-13-122:

- (7) (a)** An underage person is immune from arrest and prosecution under this section if he or she establishes the following:
- (I)** The underage person called 911 and reported in good faith that another underage person needed medical assistance due to alcohol or marijuana consumption;
 - (II)** The underage person who called 911 provided his or her name to the 911 operator;
 - (III)** The underage person was the first person to make the 911 report; and
 - (IV)** The underage person who made the 911 call remained on the scene with the underage person in need of medical assistance until assistance arrived and cooperated with medical assistance or law enforcement personnel on the scene.
- (b)** The immunity described in paragraph (a) of this subsection (7) also extends to the underage person who was in need of medical assistance due to alcohol or marijuana consumption if the conditions of said paragraph (a) are satisfied.

Additionally, to encourage students to seek medical assistance for themselves and/or others in the event of life-threatening circumstances from alcohol and/or other drugs and in the spirit of the Colorado revised statute 18-13-122 (listed above), students may be eligible (in the student conduct process) for medical amnesty if they proactively call 911 and/or Public Safety for help. The primary PCC administrator responsible for student conduct concerns (or their designee) may grant medical amnesty for the reporting student and/or student impacted by life threatening circumstances (from alcohol and/or drugs) may not be subject to disciplinary sanctions but may have educational sanctions in the student conduct process.

APPENDIX B

Policy Statement for Annual Security Report – Jeanne Clery Disclosure of Campus Security Policy and Campus Crime Statistics Act, as Amended by the Violence Against Women Reauthorization Act of 2013.

Pueblo Community College does not discriminate on the basis of sex in its educational programs and sexual harassment and sexual violence are types of sex discrimination. Other acts can also be forms of sex-based discrimination and are also prohibited whether sexually based or not and include dating violence, domestic violence, and stalking. As a result, Pueblo Community College issues this statement of policy to inform the community of our comprehensive plan addressing sexual misconduct, educational programs, and procedures that address sexual assault, domestic violence, dating violence, and stalking, whether the incident occurs on or off campus and when it is reported to a College official. In this context, Pueblo Community College prohibits the offenses of domestic violence, dating violence, sexual assault and stalking and reaffirms its commitment to maintain a campus environment emphasizing the dignity and worth of all members of the College community.

Pueblo Community College is a part of the Colorado Community College System (CCCS) and is governed by the State Board for Community Colleges and Occupational Education (SBCCOE). For a complete copy of the [SBCCOE Board Policies](#) (BP) or <https://www.cccs.edu/about-cccs/state-board/policies-and-procedures/> governing sexual misconduct. [BP 3-120](#) or <https://cccs.edu/policies-and-procedures/board-policies/bp-3-120-equal-employment-opportunity-affirmative-action/> Affirmative Action/Anti-Discrimination, prohibits employee sexual misconduct and [SP-19-60a](#), or <https://cccs.edu/policies-and-procedures/sp-19-60a-civil-rights-and-sexual-misconduct-resolution-process/>. Prohibition of Discrimination or Harassment, prohibits student sexual misconduct.

Additionally, the Board has delegated procedural authority to the Colorado Community College System President and as a result, the pertinent information can be found at [CCCS System President's Procedures \(SP\)](#) on Sexual Misconduct. [SP 19-60a](#) or <https://cccs.edu/policies-and-procedures/sp-19-60a-civil-rights-and-sexual-misconduct-resolution-process/> applies to CCCS employees, authorized volunteers, guests, and visitors. For students, [SP 19-60a](#) or <https://cccs.edu/policies-and-procedures/sp-19-60a-civil-rights-and-sexual-misconduct-resolution-process/> applies.

All Sexual Misconduct complaints are investigated pursuant to System President's Procedures, Civil Rights Grievance and Investigation Process. If the respondent to a complaint is a CCCS employee, authorized volunteer(s), guest(s), or visitor(s), [SP 19-60a](#) or <https://cccs.edu/policies-and-procedures/sp-19-60a-civil-rights-and-sexual-misconduct-resolution-process/> will apply. If the respondent is a student, [SP 19-60](#) applies.

A. Definitions

Consent, Unlawful Sexual Behavior: Colorado Revised Statutes (C.R.S.) 18-3-401, means cooperation in act or attitude pursuant to an exercise of free will and with knowledge of the nature of the act. A current or previous relationship shall not be sufficient to constitute consent. Submission under the influence of fear shall not constitute consent.

Sexual Assault: C.R.S. 18-3-402, Colorado law defines sexual assault as any actor who knowingly inflicts sexual penetration on a victim commits sexual assault if:

- The actor causes submission of the victim by means of sufficient consequence reasonably calculated to cause submission against the victim's will; or
- The actor knows that the victim is incapable of appraising the nature of the victim's conduct; or
- The actor knows that the victim submits erroneously, believing the actor to be the victim's spouse; or
- At the time of the commission of the act, the victim is less than fifteen years of age and the actor is at least four years older than the victim and is not the spouse of the victim; or
- At the time of the commission of the act, the victim is at least fifteen years of age but less than seventeen years of age and the actor is at least ten years older than the victim and is not the spouse of the victim; or
- The victim is in custody of law or detained in a hospital or other institution and the actor has supervisory or disciplinary authority over the victim and uses this position of authority to coerce the victim to submit, unless the act is incident to a lawful search; or
- The actor, while purporting to offer a medical service, engages in treatment or examination of a victim for other than a bona fide medical purpose or in a manner substantially inconsistent with reasonable medical practices; or
- The victim is physically helpless and the actor knows the victim is physically helpless and the victim has not consented.

Sexual Assault on a Child: C.R.S. 18-3-405, means any actor who knowingly subjects another not his or her spouse to any sexual contact commits sexual assault on a child if the victim is less than fifteen (15) years of age and the actor is at least four (4) years older than the victim.

Domestic Violence: C.R.S. 18-6-800.3 means an act or threatened act of violence upon a person with whom the actor is or has been involved in an intimate relationship. Domestic violence also includes any other crime against a person, or against property, including an animal or any municipal ordinance violation against a person, or against property, including an animal, when used as a method of coercion, control, punishment, intimidation, or revenge directed against a person with whom the actor is or has been involved in an intimate relationship.

Dating Violence: Violence committed by a person who is or has been in a social relationship of a romantic or intimate nature with the victim. The existence of such a relationship shall be determined based on the reporting party's statement and with consideration of the length of the relationship, the type of relationship, and the frequency of interaction between the persons involved in the relationship. There is no Colorado state law on dating violence; therefore, the college abides by the definition used in the Violence Against Women Reauthorization Act (VAWA) of 2013.

For purposes of this definition, dating violence includes, but is not limited to, sexual or physical abuse or the threat of such abuse. Dating violence does not include acts covered under the definition of domestic violence.

Stalking: C.R.S. 18-3-602. Means a person commits stalking if directly, or indirectly through another person, the person knowingly:

- Makes a credible threat to another person and, in connection with the threat, repeatedly follows, approaches, contacts, or places under surveillance that person, a member of that person's immediate family, or someone with whom that person has or has had a continuing relationship; or
- Makes a credible threat to another person and, in connection with the threat, repeatedly makes any form of communication with that person, a member of that person's immediate family, or someone with whom that person has or has had a continuing relationship, regardless of whether a conversation ensues; or
- Repeatedly follows, approaches, contacts, places under surveillance, or makes any form of communication with another person, a member of that person's immediate family, or someone with whom that person has or has had a continuing relationship in a manner that would cause a reasonable person to suffer serious emotional distress and does cause that person, a member of that person's immediate family, or someone with whom that person has or has had a continuing relationship to suffer serious emotional distress. For purposes of this paragraph (c), a victim need not show that he or she received professional treatment or counseling to show that he or she suffered serious emotional distress.

Additional definitions as it relates to "Stalking" under Colorado law:

- Conduct "in connection with" a credible threat means acts that further, advance, promote, or have a continuity of purpose, and may occur before, during, or after the credible threat.
- "Credible threat" means a threat, physical action, or repeated conduct that would cause a reasonable person to be in fear for the person's safety or the safety of his or her immediate family or of someone with whom the person has or has had a continuing relationship. The threat need not be directly expressed if the totality of the conduct would cause a reasonable person such fear.
- "Immediate family" includes the person's spouse and the person's parent, grandparent, sibling, or child.
- "Repeated" or "repeatedly" means on more than one occasion.

B. Education and Prevention Programs

The College engages in comprehensive educational programming to prevent domestic violence, dating violence, sexual assault and stalking. Educational programming consists of primary prevention and awareness programs for all incoming students and new employees and ongoing awareness and prevention campaigns for returning students and faculty that:

- Identifies domestic violence, dating violence, sexual assault and stalking as prohibited conduct;
- Defines what behavior constitutes domestic violence, dating violence, sexual assault, and stalking pursuant to Colorado law;
- Defines what behavior and actions constitute consent to sexual activity in the state of Colorado;
- Provides safe and positive options for bystander intervention that may be carried out by an individual to prevent harm or intervene when there is a risk of domestic violence, dating violence, sexual assault, or stalking against a person other than the bystander;
- Provides a variety of prevention and awareness programs that are designed to help risk reduction via the decrease occurrence of sexual misconduct concerns, educate and encourage bystander intervention, and to help empower victims and bystanders to promote safety and to help individuals and communities address conditions that facilitate violence;
- Provides information on risk reduction so that students and employees may recognize warning signs of abusive behavior and how to avoid potential attacks; and
- Provides information on the procedures the college will adhere to after a sexual misconduct concern occurs to include domestic violence, dating violence, sexual assault, stalking, and sexual harassment.

Source: 34 CFR SS668.46 (j)(1)(i)(A)-(F)

Educational programs are offered to raise awareness for all incoming students and employees, and are often conducted during new student and new employee orientation and throughout an incoming student's first semester. These programs and others offered throughout the year include strong messages regarding not just awareness, but also primary prevention. Bystander engagement is encouraged through safe and positive intervention techniques and by empowering third-party intervention and prevention such as calling for help, using intervention-based apps, identifying allies and/or creating distractions.

Programs offer variety of prevention and awareness programs that are designed to help risk reduction via the decrease occurrence of sexual misconduct concerns, educate and encourage bystander intervention, and to help empower victims and bystanders to promote safety and to help individuals and communities address conditions that facilitate violence. Programming endeavor to provide education on how to recognize warning signals and how to avoid potential attacks, and do so without victim-blaming approaches. Throughout the year, ongoing awareness and prevention campaigns are directed to students and employees, including faculty, often taking the form of campaigns, emails, guest speakers, promotion of PCC's Domestic Violence and Sexual Assault Prevention [webpage](#) or www.pueblocc.edu/dvp and events such as:

The College offered the following **primary prevention and awareness programs for incoming students** in 2022-2023:

<u>Name of Program</u>	<u>Date Held</u>	<u>Location Held</u>	<u>Complied with Program Requirements</u>	<u>Which Prohibited Behavior Covered? *</u>
Campus-wide Marijuana statement	Annually – Spring, Summer, and Fall Semesters after census	Campus Policy	Educating and Awareness notification to all campus	Marijuana Usage on campus
Emails sent to all student staff and faculty.	Annually – Spring, Summer, and Fall Semesters after census	Campus Policy	Notification of where to find DAAPP	All drug and alcohol usage

Any area underlined is a hyperlink which will direct you to a website.

Emails sent to all student staff and faculty.	Annually – Spring, Summer, and Fall Semesters after census	Campus Policy	Notification Biennial Report, Student Handbook, Annual Security Report, Drug-Free Work Place Document, Drug Alcohol and Awareness Policy, Substance Abuse and Prevention Services, How to File a Complaint/Report an Incident	All drug and alcohol usage, prohibited behavior outlined in the student handbook
AlcoholEdu Ongoing Prevention	September 2022 – July 2023 (Annually)	ONLINE (Web-based alcohol/other drug education/prevention training)	Awareness and Prevention Training for All Students	Alcohol, Marijuana, and prescription drug usage
Sexual Assault Prevention: Ongoing	September 2022 – July 2023 (Annually)	ONLINE (Web-based sexual violence prevention training)	Awareness and Prevention Training for All Students	National studies document the correlation between both areas of sexual misconduct and alcohol/drug use DoV, DaV, SA, S, SH
Diversity, Equity, and Inclusion Awareness	September 2022 – July 2023 (Annually)	ONLINE (Web-based diversity, equity, and inclusion awareness training)	Awareness and Prevention Training for All Students	Increased knowledge and awareness of topics on diversity, equity, and inclusion to help prevent concerns for discrimination, harassment, and anticipate the impact of stereotypes, microaggressions, and exclusionary behavior
Awareness of Alcohol	Annually throughout the year (Annually)	PantherFest Spring Fling PCC Social Media posts Resources included in printed campus FYI News Large posters displayed in PCC Health Clinic common display area	Awareness and education opportunity	Alcohol use and abuse; treatment
Awareness of Marijuana	Annually throughout the year	PantherFest Spring Fling PCC Social Media posts Resources included in printed campus FYI News Large posters displayed in PCC Health Clinic common display area	Awareness and education opportunity	Marijuana use and abuse; treatment

Awareness of heroin	Annually throughout the year	Large posters displayed in PCC Health Clinic common display area	Awareness and education opportunity	Heroin use and abuse; treatment
Awareness of Prescription Drugs	Annually throughout the year	Large posters displayed in PCC Health Clinic common display area	Awareness and education opportunity	Drug use and abuse; treatment
PCC Social Media Posts & Inclusion in PCC FYI News	Annually throughout 2022 - 2023 September 2022 April 2023	Social Media Posts & Inclusion in PCC FYI News	Continued prevention educational opportunities and support for All Students	National Suicide Prevention Month Sexual Assault Awareness Month SA, S, & SH National Alcohol Awareness & Prevention Month
Online New Student Orientation (NSO) is open and accessible to returning students Some returning students review this resource to “remind” themselves of available PCC resources	August 2022 November 2022 (for Spring 2023) Summer 2023 (Annually)	ONLINE New Student Orientation	References Vector Solutions (formerly EVERFI) AlcoholEdu Ongoing Prevention and Sexual Assault Prevention: Ongoing Online NSO also includes the link to the PCC Title IX webpage or https://pueblocc.edu/Title-IX	PCC Title IX webpage or https://pueblocc.edu/Title-IX

*DoV means Domestic Violence, DaV means Dating Violence, SA means Sexual Assault and S means Stalking, SH means Sexual Harassment

The College offered the following **primary prevention and awareness programs for all new and returning employees** in 2022-2023:

<u>Name of Program</u>	<u>Date Held</u>	<u>Location Held</u>	<u>Complied with Program Requirements</u>	<u>Which Prohibited Behavior Covered? *</u>
2023 CCCS Mandatory Training (All employees)	February – June 2023 (will be required of new hires after June)	Online learning modules	Prevention and awareness education	DoV, DaV, SA, S, SH
CCCS Diversity, Equity & Inclusion Training (Title IX in Higher Education)	Ongoing for new hires	Online learning modules	Prevention and awareness education	DoV, DaV, SA, S, SH
PCC Campus Security Authority Training	Annual for designated employees	Online learning module	Notification and reporting requirements	Title IX and Civil Rights violation reporting
New Employee Orientation, discuss Board	Ongoing for new hires	In-person presentation	Prevention and awareness education; possible	The use of drugs and alcohol in the workplace, to include Federal

Any area underlined is a hyperlink which will direct you to a website.

Policy and protocols related to a Drug-Free Campus			testing; required notification	restrictions pertaining to marijuana
--	--	--	--------------------------------	--------------------------------------

*DoV means Domestic Violence, DaV means Dating Violence, SA means Sexual Assault and S means Stalking, SH means Sexual Harassment

The College offered the following **ongoing awareness and prevention programs** for returning **students** in 2022-2023.

<u>Name of Program</u>	<u>Date Held</u>	<u>Location Held</u>	<u>Complied with Program Requirements</u>	<u>Which Prohibited Behavior Covered? *</u>
Campus-wide Marijuana statement	Annually – Spring, Summer, and Fall Semesters after census	Campus Policy	Educating and Awareness notification to all campus	Marijuana Usage on campus
Emails sent to all student staff and faculty.	Annually – Spring, Summer, and Fall Semesters after census	Campus Policy	Notification of where to find DAAPP	All drug and alcohol usage
Emails sent to all student staff and faculty.	Annually – Spring, Summer, and Fall Semesters after census	Campus Policy	Notification Biennial Report, Student Handbook, Annual Security Report, Drug-Free Work Place Document, Drug Alcohol and Awareness Policy, Substance Abuse and Prevention Services, How to File a Complaint/Report an Incident	All drug and alcohol usage, prohibited behavior outlined in the student handbook
AlcoholEdu Ongoing Prevention	September 2022 – July 2023 (Annually)	ONLINE (Web-based alcohol/other drug education/prevention training)	Awareness and Prevention Training for All Students	Alcohol, Marijuana, and prescription drug usage
Sexual Assault Prevention: Ongoing	September 2022 – July 2023 (Annually)	ONLINE (Web-based sexual violence prevention training)	Awareness and Prevention Training for All Students	National studies document the correlation between both areas of sexual misconduct and alcohol/drug use DoV, DaV, SA, S, SH
Diversity, Equity, and Inclusion Awareness	September 2022 – July 2023 (Annually)	ONLINE (Web-based diversity, equity, and inclusion awareness training)	Awareness and Prevention Training for All Students	Increased knowledge and awareness of topics on diversity, equity, and inclusion to help prevent concerns for discrimination, harassment, and anticipate the impact of stereotypes, microaggressions, and exclusionary behavior
Awareness of Alcohol	Annually throughout the year (Annually)	PantherFest Spring Fling PCC Social Media posts Resources included in printed campus	Awareness and education opportunity	Alcohol use and abuse; treatment

Any area underlined is a hyperlink which will direct you to a website.

		FYI News Large posters displayed in PCC Health Clinic common display area		
Awareness of Marijuana	Annually throughout the year	PantherFest Spring Fling PCC Social Media posts Resources included in printed campus FYI News Large posters displayed in PCC Health Clinic common display area	Awareness and education opportunity	Marijuana use and abuse; treatment
Awareness of heroin	Annually throughout the year	Large posters displayed in PCC Health Clinic common display area	Awareness and education opportunity	Heroin use and abuse; treatment
Awareness of Prescription Drugs	Annually throughout the year	Large posters displayed in PCC Health Clinic common display area	Awareness and education opportunity	Drug use and abuse; treatment
PCC Social Media Posts & Inclusion in PCC FYI News	Annually throughout 2022-2023 September 2022 April 2023	Social Media Posts & Inclusion in PCC FYI News	Continued prevention educational opportunities and support for All Students	National Suicide Prevention Month Sexual Assault Awareness Month SA, S, & SH National Alcohol Awareness & Prevention Month
Online New Student Orientation (NSO) is open and accessible to returning students Some returning students review this resource to “remind” themselves of available PCC resources	August 2022 November 2022 (for Spring 2023) Summer 2023 (Annually)	ONLINE New Student Orientation	References Vector Solutions (formerly EVERFI) AlcoholEdu Ongoing Prevention and Sexual Assault Prevention: Ongoing Online NSO also includes the link to the PCC Title IX webpage or https://pueblocc.edu/Title-IX	PCC Title IX webpage or https://pueblocc.edu/Title-IX

*DoV means Domestic Violence, DaV means Dating Violence, SA means Sexual Assault and S means Stalking, SH means Sexual Harassment

C. Procedures for Reporting a Complaint

The College has procedures in place that serve to be sensitive to those who report sexual assault, domestic violence, dating violence, and stalking, including informing individuals about their right to file criminal charges as well as the availability of medical, counseling and support services, and additional remedies to prevent contact between a complainant and an accused party, such as academic, transportation and working accommodations, if reasonably available. [PCC Title IX webpage](#) or <https://pueblocc.edu/Title-IX> and the Student Resource Guide when Navigating Sexual Misconduct Concerns located on the [PCC Title IX webpage](#) or <https://pueblocc.edu/Title-IX> also outlines the procedure of how and to whom to report an alleged sexual misconduct offense. Additionally, victims will be provided a written explanation of their rights via the applicable campus/site Victim's Bill of Rights located on the [PCC Police webpage](#) or <https://pueblocc.edu/public-safety> Students and employees should contact:

Pueblo Campus – Title IX Coordinator and/or Deputy Title IX Coordinators
Fremont Campus – Deputy Title IX Coordinators
PCC Southwest Campus and Sites – Deputy Title IX Coordinators
Reporting form at the PCC Website – found at this [link](#) or <https://pueblocc.edu/Concerns>

After an incident of sexual assault and domestic violence, the victim should consider seeking medical attention as soon as possible at the local hospital in your area. In Colorado, evidence may be collected even if you choose not to make a report to law enforcement. It is important that a victim of sexual assault not bathe, douche, smoke, change clothing, or clean the bed/linen/area where they were assaulted if the offense occurred within the past 96 hours so that evidence as may be necessary to the proof of criminal activity may be preserved. In circumstances of sexual assault, if victims do not opt for forensic evidence collection, health care providers can still treat injuries and take steps to address concerns of pregnancy and/or sexually transmitted disease.

Victims of sexual assault, domestic violence, stalking, and dating violence are encouraged to also preserve evidence by saving text messages, instant messages, social networking pages, other communications, and keeping pictures, logs or other copies of documents, if they have any, that would be useful to College hearing boards/investigators, or police.

Although the College strongly encourages all members of its community to report violations of this policy to law enforcement and/or campus authorities referenced above, it is the victim's choice whether or not to make such a report and victims have the right to decline involvement with the police. The campus authorities referenced above will assist any victim with notifying local police if they so desire. Local law enforcement may be reached directly by calling the following numbers or going directly to their offices:

PUEBLO:	On campus:	PCC Police Department – 719.549.3355 Student Center, Room 103
	Off campus:	Pueblo City Police Department – 719.553.2538 200 South Main Street Pueblo County Sheriff's Office – 719.583.6125 909 Court Street
CAÑON CITY:	On campus:	PCC Police Department – 719.296.6130 Fremont Campus, Room L104
	Off campus:	Cañon City Police Department – 719.276.5600 161 Justice Center Road
DURANGO:	On or off campus:	Durango Police Department – 970.375.4700 or 911 990 East 2 nd Avenue, Durango, CO
MANCOS:	On or off campus:	Montezuma Sheriff's Department – 970.565.8452 or 911 730 East Driscoll Street, Cortez, CO
BAYFIELD:	On or off campus:	Bayfield Police Department – 970.884.9636 or 911 1199 Bayfield Parkway, Bayfield, CO

If you have been the victim of domestic violence, dating violence, sexual assault, or stalking, you should report the incident promptly to the Vice President of Human Resources (Pueblo Campus Central Administration, Room 112, Pueblo, CO 81004; [email](mailto:PCCHR@PuebloCC.edu): or PCCHR@PuebloCC.edu telephone: 719.549.3220, and the PCC Police Department (Pueblo Campus Student Center, Room 103 (if you wish to do so).

The Title IX Coordinator is ultimately responsible to assure in all cases that the behavior is ended, the College acts to reasonably prevent its recurrence, and the effects on the victim and the community are remedied. The Coordinator is also responsible to assure that training is conducted annually for all advocates, investigators, hearing officers, panelists, and appeals officers that encompass a hearing process that protects the safety of victims and promotes accountability. Training will focus on sexual misconduct, domestic violence, dating violence, sexual assault, stalking, sexual harassment, retaliation, and other behaviors that may be considered forms of sex or gender discrimination covered by Title IX and Clery Act. Training will help those decision-makers in the process to protect the safety of victims and to promote accountability for those who commit offenses.

The College will provide resources to persons who have been victims of sexual assault, domestic violence, dating violence, or stalking and will apply appropriate disciplinary procedures to those who violate this policy. The procedures set forth below are intended to afford a prompt response to charges of sexual assault, domestic or dating violence, and stalking, to maintain confidentiality and fairness consistent with applicable legal requirements, and to impose appropriate sanctions on violators of this policy. The Victim’s Bill of Rights pamphlet may be obtained at the Pueblo Campus in the PCC Police Department located in the Student Center, Room 103; Fremont Campus in the Fremont Police Department located in Room L104; Durango Site: Durango High School, from the Site Coordinator; Bayfield Site: Bayfield Site Coordinator, and Mancos Campus: SW Regional Director of Student Services, Room 107, which outlines resources and includes contact information for legal assistance with visa and immigration.

As time passes, evidence may dissipate or become lost or unavailable, thereby making investigation, possible prosecution, disciplinary proceedings, or obtaining protection from abuse orders related to the incident more difficult. If a victim chooses not to make a complaint regarding an incident, he or she nevertheless should consider speaking with the PCC Police Department or other law enforcement to preserve evidence in the event that the victim changes her/his mind at a later date.

If a report of domestic violence, dating violence, sexual assault, or stalking is reported to the College, below are the procedures that the College will follow as well as a statement of the standard of evidence that will be used during any administrative hearing on campus arising from such a report:

Incident Being Reported:	Procedure Institution Will Follow:	Evidentiary Standard
Sexual Assault	<ol style="list-style-type: none"> 1. Depending on when reported (immediate vs. delayed report), institution will provide complainant with access to medical care; 2. Institution will assess immediate safety needs of complainant; 3. Institution will assist complainant with contacting local police if complainant requests AND complainant provided with contact information for local police department; 4. Institution will provide written information to complainant on how to preserve evidence; 5. Institution will provide complainant with referrals to on and off campus mental health providers; 6. Institution will assess need to implement interim or long-term protective measures, such as, change in class schedule, “No Contact” directive between both parties; 	<p>Sexual assault cases are referred to the Title IX Coordinator and are adjudicated by the institution’s Sexual Misconduct and Civil Rights Grievance and Investigation Procedures using the preponderance of the evidence standard. The Title IX Coordinator will follow the process as outlined in SP-19-60a Civil Rights & Sexual Misconduct Resolution Process or https://www.cccs.edu/policies-and-procedures/sp-19-60a-civil-rights-and-sexual-misconduct-resolution-process/ to navigate student and employee related concerns</p>

7. Institution will provide a “No trespass” Persona Non Grata (PNG) directive to accused party if deemed appropriate;
8. Institution will provide written instructions on how to apply for Protective Order;
9. Institution will provide student victims with financial aid related services;
10. Institution will provide a copy of the Sexual Misconduct and Civil Rights Grievance and Investigation Procedures to complainant and inform the complainant and respondent and inform both parties of the timeframes for inquiry, investigation and resolution;
11. Institution will inform the complainant of the outcome of the investigation, whether or not the accused will be administratively charged and what the outcome of the hearing;
12. Institution will enforce the anti-retaliation policy and take immediate and separate action against parties that retaliate against a person for complaining of sex-based discrimination or for assisting in the investigation

*Policies/processes/procedures/support resources are outlined in the Student Resource Guide when Navigating Sexual Misconduct Concerns located on the [PCC Title IX webpage](#) or [https://pueblocc.edu/Title-IX_PCC_Sexual_Misconduct/Title IX webpage](https://pueblocc.edu/Title-IX_PCC_Sexual_Misconduct/Title_IX_webpage); additionally, written explanation of victim’s rights via the applicable campus/site Victim’s Bill of Rights located on the [PCC Police webpage](#) or <https://pueblocc.edu/public-safety>

Incident Being Reported:	Procedure Institution Will Follow:	Evidentiary Standard
<p>Stalking</p>	<ol style="list-style-type: none"> 1. Institution will assess immediate safety needs of complainant; 2. Institution will assist complainant with contacting local police if complainant requests AND provide complainant with contact information for local police department; 3. Institution will provide written instructions on how to apply for Protective Order; 4. Institution will provide written information to complainant on how to preserve evidence; 5. Institution will assess the need to implement interim or long-term protective measures to protect the complainant, if appropriate; 6. Institution will provide a “No trespass” Persona Non Grata (PNG) and/or “No Contact” directive to accused party if deemed appropriate; 7. Institution will provide student victims with financial related services. <p>*Policies/processes/procedures/support resources are outlined in the Student Resource Guide when Navigating Sexual Misconduct Concerns located on the PCC Title IX webpage or https://pueblocc.edu/Title-IX PCC Sexual Misconduct/Title IX webpage; additionally, written explanation of victim’s rights via the applicable campus/site Victim’s Bill of Rights located on the PCC Police webpage or https://pueblocc.edu/public-safety.</p> <p>Additionally, PCC has created and promotes</p>	<p>Stalking cases are referred to the Dean of Students and adjudicated using the preponderance of the evidence standard. The Dean of Students will follow the disciplinary process as outlined in the PCC Student Handbook, or https://pueblocc.edu/Student_Handbook</p> <p>If the stalking is sexually based, it may fall under the institution’s Sexual Misconduct Procedure and if so, would be referred to the Title IX Coordinator and adjudicated under the institution’s Sexual Misconduct and Civil Rights Grievance and Investigation. Procedures using the preponderance of the evidence standard. The Title IX Coordinator will follow the process as outlined in SP-19-60a Civil Rights & Sexual Misconduct Resolution Process or https://www.cccs.edu/policies-and-procedures/sp-19-60a-civil-rights-and-sexual-misconduct-resolution-process/.</p>

<p>Dating Violence</p>	<ol style="list-style-type: none"> 1. Institution will assess immediate safety needs of complainant; 2. Institution will assist complainant with contacting local police if complainant requests AND provide complainant with contact information for local police department; 3. Institution will provide written instructions on how to apply for Protective Order; 4. Institution will provide written information to complainant on how to preserve evidence; 5. Institution will assess need to implement interim or long-term protective measures to protect the complainant, if appropriate; 6. Institution will provide a “No trespass” Persona Non Grata (PNG) and/or a “No Contact” directive to accused party if deemed appropriate 7. Institution will provide student victims with financial related services. <p>*Policies/processes/procedures/support resources are outlined in the Student Resource Guide when Navigating Sexual Misconduct Concerns located on the PCC Title IX webpage or https://pueblocc.edu/Title-IX PCC Sexual Misconduct/Title IX webpage; additionally, written explanation of victim’s rights via the applicable campus/site Victim’s Bill of Rights located on the PCC Police webpage or https://pueblocc.edu/public-safety.</p>	<p>Dating Violence cases are referred to the Dean of Students and adjudicated using the preponderance of the evidence standard. The Dean of Students will follow the disciplinary process as outlined in the PCC Student Handbook. or https://pueblocc.edu/Student_Handbook.</p> <p>If the dating violence incident is sexually based, it may fall under the institution’s Sexual Misconduct Procedure and if so, would be referred to the Title IX Coordinator and adjudicated under the institution’s Sexual Misconduct and Civil Rights Grievance and Investigation Procedures using the preponderance of the evidence standard. The Title IX Coordinator will follow the process as outlined in SP-19-60a Civil Rights & Sexual Misconduct Resolution Process or https://www.cccs.edu/policies-and-procedures/sp-19-60a-civil-rights-and-sexual-misconduct-resolution-process/.</p>
<p>Domestic Violence</p>	<ol style="list-style-type: none"> 1. Institution will assess immediate safety needs of complainant; 2. Institution will assist complainant with contacting local police if complainant requests AND provide complainant with contact information for local police department; 3. Institution will provide written instructions on how to apply for Protective Order 4. Institution will provide written information to complainant on how to preserve evidence; 	<p>Domestic Violence Cases are referred to the Dean of Students and adjudicated using the preponderance of the evidence standard. The Dean of Students will follow the disciplinary process as outlined in the PCC Student Handbook. or https://pueblocc.edu/Student_Handbook.</p> <p>If the act of domestic violence is sexually based, it may fall under the institution’s Sexual Misconduct Procedure and if so, would be referred to the Title IX Coordinator and adjudicated under the institution’s Sexual Misconduct and Civil Rights Grievance and Investigation</p>

	<ol style="list-style-type: none"> 5. Institution will assess need to implement interim or long-term protective measures to protect the complainant, if appropriate; 6. Institution will provide a “No trespass” Persona Non Grata (PNG) and/or a “No Contact” directive to accused party if deemed appropriate 7. Institution will provide student victims with financial related services. <p>*Policies/processes/procedures/support resources are outlined in the Student Resource Guide when Navigating Sexual Misconduct Concerns located on the PCC Title IX webpage or https://pueblocc.edu/Title-IX_PCC_Sexual_Misconduct/Title IX webpage; additionally, written explanation of victim’s rights via the applicable campus/site Victim’s Bill of Rights located on the PCC Police webpage or https://pueblocc.edu/public-safety.</p>	<p>Procedures using the preponderance of the evidence standard. The Title IX Coordinator will follow the process as outlined in SP-19-60a Civil Rights & Sexual Misconduct Resolution Process or https://www.cccs.edu/policies-and-procedures/sp-19-60a-civil-rights-and-sexual-misconduct-resolution-process/.</p>
--	---	---

D. Assistance for Victims: Rights and Options

Regardless of whether a victim elects to pursue a criminal complaint, the College will assist victims of sexual assault, domestic violence, dating violence, stalking, and sexual misconduct (on or off campus) and will provide each victim with a written explanation of their rights via the applicable campus/site Victim’s Bill of Rights located on the [PCC Police webpage](#) or <https://pueblocc.edu/public-safety> and the Student Resource Guide when Navigating Sexual Misconduct located on the [PCC Title IX webpage](#) or [https://pueblocc.edu/Title-IX_PCC_Sexual_Misconduct/Title IX webpage](https://pueblocc.edu/Title-IX_PCC_Sexual_Misconduct/Title_IX_webpage). In Colorado, a victim of domestic violence, dating violence, sexual assault or stalking has the following rights:

Rights Afforded to Victims-C.R.S. 24-4.1-302.5

In order to preserve and protect a victim's rights to justice and due process, each victim of a crime shall have the following rights:

- The right to be treated with fairness, respect, and dignity, and to be free from intimidation, harassment, or abuse, throughout the criminal justice process;
- The right to be informed of, be present or not present, and without submitting a written request for notification, for all critical stages of the criminal justice process as specified in state statute (C.R.S. 24-4.1-302(2) and 302.5);
- The right to be informed of the filing of a petition by a perpetrator of the offense to terminate sex offender registration pursuant to section 16-22-113(2)(c), C.R.S.;
- The right to be informed, upon request by the victim, when a person who is accused or convicted of a crime against the victim is released or discharged from county jail; and
- The right to be informed, upon written request by the victim, when a person who is accused or convicted of a crime against the victim is released or discharged from custody other than county jail, is paroled, escapes from a secure or non-secure correctional facility or program, or absconds from probation or parole.

Further, Pueblo Community College complies with Colorado law in recognizing orders of protection by requiring that the alleged abides by all provisions of the order or face both legal and College sanctions.

Any person who obtains an order of protection from Colorado or any reciprocal state should provide a copy to the PCC Police Department and the office of the Title IX Coordinator. A complainant may then meet with the PCC Police Department to develop a Safety Action Plan, which is a plan for campus police and the victim to reduce risk of harm while on or off campus. This plan may include, but is not limited to: escorts, special parking arrangements, providing a temporary cellphone, changing classroom location or allowing a student to complete assignments from home. Protection from abuse orders may be available through an **Emergency Protection Orders**, C.R.S. 13-14-103.

Any county or district court shall have the authority to enter an emergency protection order, which may include:

- Restraining a party from contacting, harassing, injuring, intimidating, threatening, molesting, touching, stalking, sexually assaulting or abusing any other party, a minor child of either of the parties, or a minor child who is in danger in the reasonably foreseeable future of being a victim of an unlawful sexual offense or domestic abuse;
- Excluding a party from the family home or from the home of another party upon a showing that physical or emotional harm would otherwise result;
- Awarding temporary care and control of any minor child of a party involved;
- Enjoining an individual from contacting a minor child at school, at work, or wherever he or she may be found;
- Restraining a party from molesting, injuring, killing, taking, transferring, encumbering, concealing, disposing of or threatening harm to an animal owned, possessed, leased, kept, or held by any other party, a minor child of either of the parties, or an elderly or at-risk adult; or
- Specifying arrangements for possession and care of an animal owned, possessed, leased, kept, or held by any other party, a minor child of either of the parties, or an elderly or at-risk adult.

In cases involving a minor child, the juvenile court and the district court shall have the authority to issue emergency protection orders to prevent an unlawful sexual offense, or to prevent domestic abuse, when requested by the local law enforcement agency, the county department of social services, or a responsible person who asserts, in a verified petition supported by affidavit, that there are reasonable grounds to believe that a minor child is in danger in the reasonably foreseeable future of being the victim of an unlawful sexual offense or domestic abuse, based upon an allegation of a recent actual unlawful sexual offense or domestic abuse or threat of the same. Any emergency protection order issued shall be on a standardized form prescribed by the judicial department and a copy shall be provided to the protected person.

A verbal emergency protection order may be issued only if the issuing judge finds that an imminent danger in close proximity exists to the life or health of one or more persons or that a danger exists to the life or health of the minor child in the reasonably foreseeable future.

To the extent of the victim's cooperation and consent, College offices, including the offices of the Academic Deans, the Vice President of Student Success, and the Dean of Students will work cooperatively to ensure that the complainant's health, physical safety, work and academic status are protected, pending the outcome of a formal College investigation of the complaint. For example, if reasonably available, a complainant may be offered changes to academic or working situations in addition to off campus counseling, health services, assistance in notifying appropriate local law enforcement, no contact orders, and other protective measures. The office of the Dean of Students is responsible for assisting the victim with these accommodations. Policies/processes/procedures/support resources are outlined in the Student Resource Guide when Navigating Sexual Misconduct Concerns located on the [PCC Title IX webpage](https://pueblocc.edu/Title-IX) or <https://pueblocc.edu/Title-IX> [PCC Sexual Misconduct/Title IX webpage](https://pueblocc.edu/Title-IX); additionally, written explanation of victim's rights via the applicable campus/site Victim's Bill of Rights located on the [PCC Police webpage](https://pueblocc.edu/public-safety) or <https://pueblocc.edu/public-safety>.

Additionally, personal identifiable information about the victim will be treated as confidential and only shared with persons with a specific need to know who are investigating/adjudicating the complaint or delivering resources or support services to the complainant. The College excludes personal identifiable information and does not publish the name of crime victims nor house identifiable information regarding victims in the PCC Police Department Daily Crime Log [online](https://pueblocc.edu/public-safety) or <https://pueblocc.edu/public-safety> to maintain confidentiality in all publicly available records. Victims may request that

directory information on file be removed from public sources by requesting through the PCC Office of Admissions and Records.

PCC Financial Aid Services

If a student victim would like information regarding financial aid services, please contact the Director of Financial Aid, 719.549.3200. The College can assist students with information on how to apply for a withdrawal from classes or about options for addressing concerns about loan repayment terms and conditions.

Resources for victims of Domestic Violence, Dating Violence, Sexual Assault & Stalking

On-Campus

Department	Location	Phone
Health Clinic	Pueblo Campus – MT 118	719.549.3315
Dean of Students	Pueblo Campus – SC-261	719.549.3035
PCC Police Department	Pueblo Campus – SC 103	719.549.3355
Contact Local Law Enforcement	Fremont Campus	719.276.5555
Contact Local Law Enforcement	PCC Southwest Site (Durango)	970.375.4700
Contact Local Law Enforcement	PCC Southwest Site (Bayfield)	970.884.9636
Contact Local Law Enforcement	PCC Southwest Campus (Mancos)	970.565.8452 or 970.533.1432

Community Resources

Agency	Address	Phone
LOCAL POLICE	Pueblo – 200 South Main Street	719.553.2502
	Cañon City – 161 Justice Center Road	719.276.5600
	Durango – 990 East 2 nd Street	970.375.4700
	Cortez – 608 N. Park Street	970.565.8441
	Bayfield – 1199 Bayfield Parkway	970.884.9636
LOCAL HOSPITALS		
Parkview Medical Center	400 West 16 th Street, Pueblo	719.584.4000
St. Mary Corwin Hospital	1008 Minnequa Avenue, Pueblo	719.557.4000
St. Thomas More Hospital	1336 Phay Avenue, Cañon City	719.285.2000
Mercy Regional Medical Center	1010 Three Springs Boulevard, Durango	970.247.4311
Southwest Memorial Hospital	1311 North Mildred Road, Cortez	970.565.6666
SEXUAL VIOLENCE CENTERS		
Pueblo Rape Crisis Services	503 North Main Street, #526	719.544.1191
Health Solutions Behavioral Health Center	1310 Chinook, Pueblo	719.545.2746
Family Crisis Services, Inc.	3228 Independence Road, Cañon City	719.275.2429
Domestic Violence Prevention	1060 Main Avenue, Durango	970.259.7457
National Domestic Violence Hotline		800.799.7233 or Text "LOVEIS" to 22522
Sexual Assault Services Organization (SASO Hotline)	Durango, Bayfield, Ignacio	970.247.5400
Renew, Inc. Hotline	P.O. Box 169, Cortez	970.565.4886
Pueblo YWCA Family Crisis Shelter	801 North Santa Fe Avenue	719.542.6904

Other resources available to persons who report being the victim of sexual assault, domestic violence, dating violence, or stalking, include:

[Colorado Coalition Against Sexual Assault](https://www.ccasa.org/) or <https://www.ccasa.org/>
[Colorado Coalition Against Domestic Violence](https://www.violencefreecolorado.org/) or <https://www.violencefreecolorado.org/>
[Colorado Anti-Violence Program](http://www.coavp.org/), or <http://www.coavp.org/> (Building Safety and Justice for LGBTQ Communities)
[Colorado State Employee Assistance Program](https://cseap.colorado.gov/) or <https://cseap.colorado.gov/>
[Rape, Abuse and Incest National Network](https://www.rainn.org/) or <https://www.rainn.org/>
[National Sexual Violence Resource Center](https://www.nsvrc.org/) or <https://www.nsvrc.org/>
[National Resource Center on Domestic Violence](https://www.nrcdv.org/) or <https://www.nrcdv.org/>
[National Domestic Violence Hotline](https://www.thehotline.org/) or <https://www.thehotline.org/>

Any area underlined is a hyperlink which will direct you to a website.

[InterAct Advocates for Intersex Youth](https://interactadvocates.org/) or <https://interactadvocates.org/>

[Men Can Stop Rape](https://mcsr.org/) or <https://mcsr.org/>

[Make the Connection](https://www.maketheconnection.net/conditions/military-sexual-trauma) or <https://www.maketheconnection.net/conditions/military-sexual-trauma>

(Support for Veterans)

[1 is 2 Many](https://1is2many.okstate.edu/) or <https://1is2many.okstate.edu/> (Focus on teens and young women ages 16-24)

[Not Alone Together Against Sexual Assault](https://youth.gov/federal-links/notalonegov-together-against-sexual-assault) or <https://youth.gov/federal-links/notalonegov-together-against-sexual-assault>

[Department of Justice](https://www.justice.gov/ovw/sexual-assault) or <https://www.justice.gov/ovw/sexual-assault>

[Department of Education, Office of Civil Rights](https://www2.ed.gov/about/offices/list/ocr/index.html) or <https://www2.ed.gov/about/offices/list/ocr/index.html>

E. Adjudication of Violations

Whether or not criminal charges are filed, the College or a person may file a complaint under the Civil Rights Grievance and Investigation Process. If the respondent to a complaint is a CCCS employee, authorized volunteer(s), guest(s), or visitor(s), [SP 19-60a](#) will apply. If the respondent is a student, [SP-19-60a Civil Rights & Sexual Misconduct Resolution Process](#) or <https://www.cccs.edu/policies-and-procedures/sp-19-60a-civil-rights-and-sexual-misconduct-resolution-process/> applies. Reports of all domestic violence, dating violence, sexual assault and stalking made to PCC Police Department will automatically be referred to the Title IX Coordinator for investigation regardless if the complainant chooses to pursue criminal charges.

The College's civil rights grievance and investigation process, as well as the discipline process, will provide prompt, fair, and impartial investigation and resolution that is:

- Completed within reasonably prompt timeframes which, pursuant to our procedure, is sixty (60) days. If the college finds it necessary to extend this timeline, they may do so for good cause. The college will provide written notice to the accuser and the accused of the delay and the reason for the delay;
- The processes shall be conducted in a manner that is transparent to the accuser and accused;
- The processes allow for timely notice of meetings at which the accuser or accused, or both, may be present;
- Provides timely access to the accuser, the accused, and appropriate officials to any information that will be used after the fact-finding investigation but during the disciplinary meetings and hearings conducted by officials who do not have a conflict of interest or bias for or against the accuser or the accused to have an advisor of their choice present at any meeting.

All college officials involved with the investigation and discipline process are trained annually on the issues related to domestic violence, dating violence, sexual assault, and stalking. These employees are taught how to investigate and hearing process that protects the safety of the victim and promotes accountability.

After the civil rights grievance and investigation process is concluded, the findings are shared with the disciplinary authority to begin the college's discipline process.

If the accused is an employee, sanction decisions are outlined in:

- For faculty, disciplinary action will be in compliance with [BP 3-20](#) or <https://cccs.edu/policies-and-procedures/board-policies/bp-3-20-due-process-for-faculty/>.
- For classified employees, disciplinary action will be taken pursuant to the [State Personnel Rules and Regulations](#) or <https://spb.colorado.gov/>.
- For administrative and professional/technical employees, there is no specific procedure outlined on discipline; therefore, the appointing authority will conduct a prompt, fair and impartial discipline process.
- For authorized volunteers, guests and visitors, there is no specific applicable procedure; therefore, the responsible party or designee will conduct a prompt, fair and impartial discipline process.
- The accuser and the accused will be notified simultaneously in writing of the outcome of any disciplinary proceeding, shall be given the rationale for the discipline decision, advised of their right to appeal, subject to the grounds below, by filing a written appeal with the Title IX/EO Coordinator within ten (10) calendar days of service of the decision, provided any changes to the results, and notified when the results are finalized.

If the accused is a student, [SP 4-30a](#), or <https://cccs.edu/policies-and-procedures/system-presidents-procedures/sp-4-30a-student-behavior-procedure/> Student Disciplinary Procedure, applies. The student discipline process, in all cases, provides that:

1. The accuser and the accused each have the opportunity to meet with the Dean of Students, for students, or the Appointing Authority/Disciplinary Authority, for Colorado Community College System (CCCS) employees, authorized volunteers, guests and visitors;
2. Attend a hearing before a properly trained hearing panel or person;
3. The accuser and the accused each have the opportunity to be advised by a personal advisor of their choice, at their expense, at any stage of the process and to be accompanied by that advisor at any meeting or hearing;
4. An advisor may only consult and advise his or her advisee, but not speak for the advisee at any meeting or hearing. These procedures are entirely administrative in nature and are not considered legal proceedings. The System or College may remove or dismiss an advisor who become disruptive or who does not abide by the restrictions on their participation as explained above;
5. An employee and student conduct decision are based on the preponderance of evidence standard, i.e., “more likely than not to have occurred” standard. In other words, the conduct process asks: “is it more likely than not that the accused violated State Board for Community Colleges and Occupational Education (SBCCOE) Policy;
6. The accuser and the accused will be notified simultaneously in writing of the outcome of any disciplinary proceeding, shall be given the rationale for the discipline decision, be advised of their right to appeal, subject to the grounds below, by filing a written appeal with the Title IX/EO Coordinator within ten (10) calendar days of service of the decision, provided any changes to the results, notified when the results are finalized; and
7. When a complainant does not consent to the disclosure of his or her name or other identifiable information to the alleged perpetrator, the College’s ability to respond to the complaint may be limited.

Confidentiality

The College will protect the identity of persons who report having been victims of sexual assault, domestic violence, dating violence, or stalking to the fullest extent of the law.

Sanctions and Protective Measures

In all cases, investigations that result in a finding of more likely than not that a violation(s) has occurred may lead to the initiation of disciplinary procedures against the accused individual. Examples of college sanctions may include, but are not limited to:

- For students-warning, probation, fines, restitution, denial of privileges, assignment to perform services for the benefit of the college or community, suspension, expulsion, or “No trespass” directive Persona Non Grata (PNG).
- For CCCS employees-warning, written warning, corrective actions, probation, restitution, denial of privileges, suspension, and termination of employment, a “Cease Communication” directive or “No trespass” directive (PNG).
- For authorized volunteers, guest(s), or visitors-warning, writing warning, denial of privileges, dismissal from College, a “Cease Communications” directive, or a “No trespass” directive (PNG).

Additionally, the College may implement protective measures following the report of domestic violence, dating violence, sexual assault and/or stalking which may include some or all of the following actions: changing of class schedules, restrictions on campus usage, interim or permanent suspensions, College expulsion. For students, sexual assault, domestic violence, dating violence, and stalking are violations of the Student Conduct Code. Employees who violate this policy will be subject to discipline, up-to-and including termination of employment. Sexual assault, domestic violence, dating violence, and stalking are criminal acts which also may subject the perpetrator to criminal and civil penalties under federal and state laws.

The Title IX Coordinator will determine whether interim interventions and protective measure should be implemented, and, if so, take steps to implement those protective measures as soon as possible. Examples of interim protective measures include, but are not limited to: an order of no contact, residence hall relocation, adjustment of course schedules, a leave of absence, or reassignment to a different supervisor or position. These remedies may be applied to one, both, or multiple parties involved. Violations of the Title IX Coordinator's directives and/or protective measures will constitute related violations that may lead to additional disciplinary action. Protective measures imposed may be temporary pending the results of an investigation or may become permanent as determined by Pueblo Community College.

Sex Offender Registration

In accordance to the Campus Sex Crimes Prevention Act of 2000, which amends the Jacob Wetterling Crimes Against Children and Sexually Violent Offender Registration Act, the Jeanne Clery Act and the Family Educational Rights and Privacy Act of 1974, the College is providing a link to the Colorado State Sex Offender Registry. All sex offenders are required to register in the state of Colorado and to provide notice of each institution of higher education in Colorado at which the person is employed, carries a vocation or is a student.

In Colorado, convicted sex offenders must register with the Colorado Bureau of Investigation (CBI). [The Colorado sex offender website](#) or <https://apps.colorado.gov/apps/dps/sor/>.

Prohibition on Retaliation

An institution, or an officer, employee, or agent of an institution, may not retaliate, intimidate, threaten, coerce, or otherwise discriminate against any individual for exercising their rights or responsibilities under any provision in this policy. Pueblo Community College will take a violation of this policy seriously. Any student who violates this policy will be subject to disciplinary sanctions which may include expulsion from the College. Any college employee who violates this policy will be subject to disciplinary sanctions to include possible termination of employment.

APPENDIX C

Victim Assistance and Drug/Alcohol Referral Programs and Resources:

Pueblo Community College provides written notification to students and employees of a variety of resources to include counseling, mental health, victim advocacy, legal assistance, visa and immigration assistance, student financial aid, and other services available to victims, both within PCC and in the community via email sent each semester (after census).

DRUG AND ALCOHOL ABUSE PREVENTION PROGRAMS

DRUGS AND ALCOHOL ON CAMPUS OR AS PART OF ANY COLLEGE ACTIVITY

Standards of Conduct for Students and Employees

In compliance with the Drug-Free Schools and Communities Act Amendment of 1989 (Public Law 101-226), students, staff, or faculty shall not engage in the unauthorized or unlawful manufacture, distribution, dispensation, possession, use/abuse of alcohol and/or illicit drugs on college property or as part of any college activity.

Legal Sanctions

Any student, staff, or faculty who are convicted of the unlawful manufacture, distribution, dispensation, possession, use, or abuse of illicit drugs or alcohol is subject to criminal penalties under local, state, or federal law. These penalties range in severity from a fine of \$100 up to \$8,000,000 and/or life imprisonment. The exact penalty assessed depends upon the nature and the severity of the individual offense. The possession and/or consumption of alcohol by a minor is addressed in Appendix A, 18-13-122.

College Sanctions

The college will impose penalties against students who violate the Drug-Free Schools and Communities Act Amendments of 1989 (Public Law 101-226). Violators will be subject to disciplinary action under student disciplinary policies. The sanctions include but are not limited to probation, suspension, or expulsion from the college, termination of student employment, and referral to authorities for prosecution, as appropriate. The Student Handbook can be found on the PCC [website](https://pueblocc.edu/Student_Handbook) or https://pueblocc.edu/Student_Handbook.

Employees may be subject to corrective and/or disciplinary action as per State Personnel Rules and Regulations, up to and including termination.

Health Risks

A myriad of health risks is associated with drug and alcohol abuse. Risks include but are not limited to: malnutrition, brain damage, heart disease, pancreatitis, cirrhosis of the liver, mental illness, death, low birth weight babies, and babies with drug addictions. Personal relationships, family dynamics, ability to work and study are also at risk. Further information on health risks is available in the Human Resource Services Office, Pueblo Community College Health Center, local health department, and local hospital via brochures, videos, and educational programs presented throughout the year. In addition, specific health risks are listed in Appendix B.

Treatment and Referral

Referral for counseling, treatment, rehabilitation and treatment programs can be found at the Human Resource [website](https://pueblocc.edu/TitleIX/Resources) or <https://pueblocc.edu/TitleIX/Resources>, the Health Clinic's [website](https://pueblocc.edu/Health_Clinic), or https://pueblocc.edu/Health_Clinic or throughout the community. Referral programs and resources can be found in Appendix C below.

PREVENTION PROGRAMS – STUDENTS

Alcohol Abuse

Pueblo Community College provides crisis intervention and referral services for students with issues with alcohol use and abuse. These services are provided through the PCC Health Clinic in partnership with Pueblo Community Health Center located in the Medical Technology Building, Room, 118.

The College will provide education and awareness programs that will address the affects and dangers of alcohol abuse. These programs will be offered on each PCC campus annually and will vary during the academic year.

Campus Survey

Pueblo Community College has conducted student surveys regarding their concerns about drug and alcohol use and abuse, and asking students what the College can do to address their concerns. The small sample of students who responded did not identify any specific concern about either alcohol or drugs that the College would need to address. As a result, the College determined to offer general programs on alcohol and drug abuse awareness.

Drug Abuse

Pueblo Community College provides crisis intervention and referral services for students with issues with drug use and abuse. These services are provided through the PCC Health Clinic in partnership with Pueblo Community Health Center located in the Medical Technology Building, Room, 118.

The College is partnering with the Colorado Department of Social Services, Pueblo Diocese Catholic Charities, and many other referral agencies to provide PCC students with care. Education and awareness programs will address the affects and dangers of drug abuse. The College will focus on alcohol and marijuana, cocaine, and heroin use and abuse annually during academic year. Heroin has been identified as a drug of choice that is being widely used in the Pueblo area. The College has decided to respond to heroin use and abuse in its drug awareness and prevention program. These programs will be offered on each PCC campus.

Use and Possession of Marijuana is Prohibited on Campus

Colorado law may allow certain marijuana related activities, such as limited medical marijuana use and other recreational use and possession; however, using and possessing marijuana in any form remains a crime under federal law. Since PCC receives federal grants and contracts we are required to follow federal laws under provision Title 21 of the United States Code Controlled Substance Act. Also, PCC adheres to the provisions of the Drug-Free Workplace Act of 1988 and the Drug-Free Schools and Communities Act Amendment of 1989. As a member of the Community Colleges of Colorado, PCC adheres to the State Board for Community Colleges and Occupational Education [BP 3-24](#), or <https://cccs.edu/policies-and-procedures/board-policies/bp-3-24-drug-free-workplace/> Drug-Free Workplace Policy. Federal laws require the college to prohibit the use of marijuana on campus.

PCC prohibits the possession, use, or selling of marijuana in any form on campus and during PCC activities. This includes all open areas, buildings, and parking lots. Any employee or student found possessing, using, or selling marijuana on any PCC campus and/or facilities may be charged criminally by the PCC Police Department. Students may also face disciplinary sanctions for Student Code of Conduct Violations.

If you suspect someone of possessing, using, or selling marijuana on campus or at college sponsored events please contact the PCC Police Department at 719.549.3355; visit the PCC [website](#), or <https://pueblocc.edu/> scroll down to the bottom of the page to Quick Links, Services and fill out the document entitled “Report a Concern or Incident.” You may also report anonymously to Safe2Tell. Safe2Tell is an anonymous reporting method that can alert the college about a concern or threat. To access Safe2Tell you can either call the toll-free number at 1.877.542.7233 or submit an online report tip at the following [website](#) or <https://safe2tell.org/>.

Appendix A

18-13-122. Illegal possession or consumption of ethyl alcohol by an underage person - adolescent substance abuse prevention and treatment fund - legislative declaration.

(1) As used in this section, unless the context otherwise requires:

(a) "Establishment" means a business, firm, enterprise, service or fraternal organization, club, institution, entity, group, or residence, and any real property, including buildings and improvements, connected therewith, and shall also include any members, employees, and occupants associated therewith.

(b) "Ethyl alcohol" means any substance which is or contains ethyl alcohol.

(c) "Possession of ethyl alcohol" means that a person has or holds any amount of ethyl alcohol anywhere on his person, or that a person owns or has custody of ethyl alcohol, or has ethyl alcohol within his immediate presence and control.

(d) "Private property" means any dwelling and its curtilage which is being used by a natural person or natural persons for habitation and which is not open to the public and privately-owned real property which is not open to the public. "Private property" shall not include:

(I) Any establishment which has or is required to have a license pursuant to article 46, 47, or 48 of title 12, C.R.S.; or

(II) Any establishment which sells ethyl alcohol or upon which ethyl alcohol is sold; or

(III) Any establishment which leases, rents, or provides accommodations to members of the public generally.

(2) (a) Any person under twenty-one years of age who possesses or consumes ethyl alcohol anywhere in the state of Colorado commits illegal possession or consumption of ethyl alcohol by an underage person.

Illegal possession or consumption of ethyl alcohol by an underage person is a strict liability offense.

(b) (I) Upon conviction of a first offense, illegal possession or consumption of ethyl alcohol by an underage person shall be punished by a fine of not more than two hundred fifty dollars. The court, upon sentencing a defendant pursuant to this paragraph (b), may, in addition to any fine, order that the defendant perform up to twenty-four hours of useful public service, subject to the conditions and restrictions of section 18-1.3-507, and may further order that the defendant submit to and complete an alcohol evaluation or assessment, an alcohol education program, or an alcohol treatment program at such defendant's own expense.

(II) Upon conviction of a second offense, illegal possession or consumption of ethyl alcohol by an underage person shall be punished by a fine of not more than five hundred dollars, and the court shall order the defendant to submit to and complete an alcohol evaluation or assessment, an alcohol education program, or an alcohol treatment program, at the defendant's own expense. The court may further order the defendant to perform up to twenty-four hours of useful public service, subject to the conditions and restrictions specified in section 18-1.3-507.

(III) Upon conviction of a third or subsequent offense, illegal possession or consumption of ethyl alcohol by an underage person shall be a class 2 misdemeanor, and the court, in addition to sentencing the defendant pursuant to the provisions of section 18-1.3-501, shall order the defendant to submit to and complete an alcohol evaluation or assessment, an alcohol education program, or an alcohol treatment program, at the defendant's own expense.

(IV) A person convicted of a violation of this section is subject to an additional penalty surcharge of twenty-five dollars that shall be administered to the adolescent substance abuse prevention and treatment fund.

(3) It shall be an affirmative defense to the offense described in subsection (2) of this section that the ethyl alcohol was possessed or consumed by a person less than twenty-one years of age under the following circumstances:

(a) While such person was legally upon private property with the knowledge and consent of the owner or legal possessor of such private property and the ethyl alcohol was possessed or consumed with the consent of his parent or legal guardian who was present during such possession or consumption; or

(b) When the existence of ethyl alcohol in a person's body was due solely to the ingestion of a confectionery which contained ethyl alcohol within the limits prescribed by section 25-5-410 (1) (i) (II), C.R.S.; or the ingestion of any substance which was manufactured, designed, or intended primarily for a purpose other than oral human ingestion; or the ingestion of any substance which was manufactured, designed, or intended solely for medicinal or hygienic purposes; or solely from the ingestion of a beverage which contained less than one-half of one percent of ethyl alcohol by weight.

(c) The person is a student who:

(I) Tastes but does not imbibe an alcohol beverage only while under the direct supervision of an instructor who is at least twenty-one years of age and employed by a post-secondary school;

(II) Is enrolled in a university or a post-secondary school accredited or certified by an agency recognized by the United States department of education, a nationally recognized accrediting agency or association, or the "Private Occupational Education Act of 1981", article 59 of title 12, C.R.S.;

(III) Is participating in a culinary art, food service, or restaurant management degree program; and

(IV) Tastes but does not imbibe the alcohol beverage for instructional purposes as a part of a required course in which the alcohol beverage, except the portion the student tastes, remains under the control of the instructor.

(4) The possession or consumption of ethyl alcohol shall not constitute a violation of this section if such possession or consumption takes place for religious purposes protected by the first amendment to the United States constitution.

(4.5) An underage person and one or two other persons shall be immune from criminal prosecution under this section if they establish the following:

(a) One of the underage persons called 911 and reported that another underage person was in need of medical assistance due to alcohol consumption;

(b) The underage person who called 911 and, if applicable, one or two other persons acting in concert with the underage person who called 911 provided each of their names to the 911 operator;

(c) The underage person was the first person to make the 911 report; and

(d) The underage person and, if applicable, one or two other persons acting in concert with the underage person who made the 911 call remained on the scene with the underage person in need of medical assistance until assistance arrived and cooperated with medical assistance and law enforcement personnel on the scene.

(5) Prima facie evidence of a violation of subsection (2) of this section shall consist of:

(a) Evidence that the defendant was under the age of twenty-one years and possessed or consumed ethyl alcohol anywhere in this state; or

(b) Evidence that the defendant was under the age of twenty-one years and manifested any of the characteristics commonly associated with ethyl alcohol intoxication or impairment while present anywhere in this state.

Appendix B

Health Risks of Alcohol and Drugs

Tobacco and Nicotine

Smokers are more likely than non-smokers to contract heart disease. Lung, larynx, esophageal, bladder, pancreatic, and kidney cancers also strike smokers at increased rates. Thirty percent of cancer deaths are linked to smoking. Chronic obstructive lung diseases, such as emphysema and chronic bronchitis, are 10 times more likely to occur among smokers than among nonsmokers. Smoking during pregnancy also poses risks, such as spontaneous abortion, pre-term birth, and low birth weights. Fetal and infant deaths are more likely to occur when the pregnant woman is a smoker. Nicotine is both psychologically and physically addictive.

Alcohol

Low doses significantly impair the judgment and coordination needed to operate vehicles. Small amounts can also lower inhibitions. Moderate to high doses cause marked impairments in higher mental functions, and loss of memory and the ability to learn and remember information. High doses cause respiratory depression and death. Long-term consumption, particularly when combined with poor nutrition, can also lead to dependence and permanent damage to vital organs such as the brain and the liver. If combined with other depressants of the central nervous system, much lower doses of alcohol will produce the effects just described. Mothers who drink alcohol during pregnancy may give birth to infants with fetal alcohol syndrome. These infants have irreversible physical abnormalities and mental retardation.

Cannabis (Marijuana, Hashish, Hashish Oil, Tetrahydrocannabinol)

Physical effects of cannabis include increased heart rate, bloodshot eyes, dry mouth and throat, and increased appetite. Use of cannabis may impair or reduce short-term memory and comprehension, alter sense of time, reduce ability to perform tasks requiring concentration and coordination, and impair driving ability. Motivation and cognition may be altered, making the acquisition of new information difficult. Marijuana, hashish, THC, etc., can also produce paranoia and psychosis. Long-term use may result in possible lung damage, reduced sperm count and sperm motility, and may affect ovulation cycles. Cannabis can also be psychologically addictive.

Inhalants (Nitrous Oxide, Amyl Nitrite, Butyl Nitrite, Chlorohydrocarbons, Hydrocarbons)

Immediate effects of inhalants include nausea, sneezing, coughing, nosebleeds, fatigue, lack of coordination, and loss of appetite. Solvents and aerosol sprays also decrease the heart and respiratory rates and impair judgment. Amyl and butyl nitrite cause rapid pulse, headaches, and involuntary passing of urine and feces. Long-term use may result in hepatitis or brain damage. Deeply inhaling vapors, or using large amounts over a short time, may result in disorientation, violent behavior, unconsciousness, or death. High concentrations of inhalants can cause suffocation by displacing oxygen in lungs. Long-term use can cause weight loss, fatigue, electrolyte imbalance, muscle fatigue, and permanent damage to the nervous system.

Cocaine (Crack)

Cocaine stimulates the central nervous system. Its immediate effects include dilated pupils and elevated blood pressure, heart rate, respiratory rate, and body temperature. Occasional use can cause nasal irritation; chronic use can ulcerate the mucous membrane of the nose. Crack or freebase rock is extremely addictive. Physical effects include dilated pupils, increased pulse rate, elevated blood pressure, insomnia, loss of appetite, tactile hallucinations, paranoia, and seizures. The use of cocaine can cause death by cardiac arrest or respiratory failure.

Stimulants (Amphetamines, Methamphetamines, Crank, Ice)

Stimulants cause increased heart and respiratory rates, elevated blood pressure, dilated pupils, and decreased appetite. Users may experience sweating, headache, blurred vision, dizziness, sleeplessness, and anxiety. Extremely high doses can cause rapid or irregular heartbeat, tremors, loss of coordination, and physical collapse. Amphetamine injection creates a sudden increase in blood pressure that can result in stroke, very high fever, or heart failure. In addition to physical effects, feelings of restlessness, anxiety, and moodiness can result. Use of large amounts over a long period of time can cause amphetamine psychosis that includes hallucinations, delusions, and paranoia. The use of amphetamines can cause physical and psychological dependence.

Depressants (Barbituates, Methaqualone, Tranquilizers)

Small amounts can produce calmness and relaxed muscles, but somewhat larger doses can cause slurred speech, staggering gait, and altered perception. Large doses can cause respiratory depression, coma, and death. Combination of depressants and alcohol can multiply effects of the drugs, thereby multiplying risks. Babies born to mothers who abuse depressants during pregnancy may be physically dependent on the drugs and show withdrawal symptoms shortly after birth. Birth defects and behavioral problems may also result. The use of depressants can cause both physical and psychological dependence.

Hallucinogens (PCP, LSD, Mescaline, Peyote, Psilocybin)

Phencyclidine (PCP) interrupts the functions of the neocortex, the section of the brain that controls intellect and instinct. PCP blocks pain receptors, and users can have violent PCP episodes resulting in self-inflicted injuries. Lysergic acid diethylamide (LSD), mescaline, and psilocybin cause illusions and hallucinations. The physical effects may include dilated pupils, elevated body temperature, increased heart rate and blood pressure, loss of appetite, sleeplessness, and tremors.

Narcotics (Heroin, Methadone, Codeine, Morphine, Meperidine, Opium)

Narcotics initially produce a feeling of euphoria that often is followed by drowsiness, nausea, and vomiting. Users may experience constricted pupils, watery eyes and itching. Overdoses may produce respiratory depression, clammy skin, convulsions, coma and death. Addiction in pregnant women can lead to premature, stillborn, or addicted infants who experience severe withdrawal symptoms. Use of narcotics can cause physical and psychological dependence.

Designer Drugs (Analogues of Fenatyl, Analogues of Meperidine, MDMA, Ecstasy Analogues of PCP)

Many "designer drugs" are related to amphetamines and depressants and have mild stimulant and depressant properties. Use can produce severe neurochemical damage to the brain. Narcotic analogues can cause symptoms such as those seen in Parkinson's disease: uncontrollable tremors, drooling, impaired speech, paralysis, and irreversible brain damage. Analogues of amphetamines and methamphetamines cause nausea, blurred vision, chills or sweating, and faintness. Psychological effects include anxiety, depression, and paranoia. Analogues of PCP cause illusions, hallucinations, and impaired perception.

Anabolic Steroids

Steroid users subject themselves to more than 70 side effects, ranging in severity from acne to liver cancer, including psychological as well as physical reactions. The liver and cardio-vascular and reproductive systems are most seriously affected by use. In males, use can cause withered testicles, sterility, and impotence. In females, irreversible masculine traits can develop along with breast reduction and sterility. Psychological effects in both sexes include very aggressive behavior, known as "roid rage", and depression. While some side effects appear quickly, others, such as heart attacks and strokes, may not show up for years.

References

U.S. Dept. of Education (1989). What Works: Schools Without Drugs. (Rockville, MD: National Clearinghouse for Alcohol and Drug Information, 1989), pp 61-72
National Institute on Drug Abuse, NIDA Capsules, (Rockville, MD: Press Office of the National Institute on Drug Abuse, 1986)

Appendix C

Victim Assistance and Drug/Alcohol Referral Programs and Resources:

Colorado Crisis Services or <https://coloradocrisiservices.org/> - **1-844-493-8255**

Pueblo Campus:

- Addict2Athlete: 2101 E. Evans Avenue, Pueblo, CO 81004 – 719.250.7859
- Catholic Charities Family Counseling Center: 719.544.4233
- CO Anti-Violence Program (LGBT): 1.888.557.4441 (May have to leave a message)
- **Community Care** or <https://www.mycommunitycare.org/> - 719.314.2560
- Child Abuse/Neglect Reporting: 719.583.6901
- YWCA: Adult & Child Domestic Violence Counseling 719.542.6904
- Posada: 719.545.8776
- Alano Club (support& referral): 320 Clark Street, Pueblo, CO 81003 – 719.542.6347
- Alcoholic Anonymous: 4035 Club Manor Drive, Suite A, Pueblo, CO 81008 – 719.546.1173
- Crossroads Turning Point: 509 E. 13th Street, Pueblo, CO 81001 – 719.546.6666;
Special Women's Services: 3500 Baltimore, Pueblo, CO 81008 – 719.545.1181;
Alcoholism Treatment Program: 1711 E. Evans Avenue, Pueblo, CO 81004 – 719.924.9511
- Parkview-Chemical Dependency Program: 58 Club Manor Drive, Pueblo, CO 81008 – 719.584.4343
- Parkview Adolescent Substance Abuse Program: 56 Club Manor Drive, Suite 104, Pueblo, CO 81008 – 719.584.4457
- HIV/AIDS Hotline: 1.800.CDC.INFO (1.800.232.4636)
- **Health Solutions** or <https://www.health.solutions/> - 719.545.2746
- Pueblo City/County Health Department: 719.583.4300
- Teen Crisis Line-runaway hotline-Covenant House "9" Line: 1.800.999.9999
- **Safe2Tell**: or <https://safe2tell.org/> - 1.877.542.SAFE (1.877.542.7233)
- **TESSA crisis line**: or <https://www.tessacs.org/> - 719-633-3819
- Pueblo Community Health Center:
On Campus: MT 118 – 719.549.3315
Main Clinic: 110 East Routt Avenue, Pueblo, CO 81004: 719.543.8711

Fremont Campus:

- Alcoholics Anonymous: 719.275.7089
- Family Crisis Services, Inc.: 3228 Independence Road, Cañon City, CO 81212 – 719.275.2429
- Gateway to Success: 602 Yale Place, Cañon City, CO 81212 – 719.275.0700 at this [link](#) or <https://www.rehab.com/colorado>
- Rocky Mountain Behavioral Health: 3239 Independence Road, Cañon City, CO 81212 – 719.275.7650
- Solvista Health: Canon City call 719.275.2351; Westcliffe call 719.783.9064

Mancos Campus, Bayfield, and Durango Sites:

- Al-Anon and Al-Ateen Family Groups SW Groups: 970.259.2982
- **Alcoholic Anonymous (Southwest)**:or <https://aadistrict18.org/> - 970.247.1706
- Alternative Horizons, Durango, CO: 970.247.9619
- Axis Crises Line – 970.247.5245
- Colorado Crises Services – 1.844.493.8255, Text “TALK” to 38255
- Detox of La Plata County, Durango, CO: 970.259.8732
- Durango Recovery Center, 736 Goeplein Gulch, Durango, CO 81301: 800.913.7317, at this [link](#) or www.durangorecoverycenter.com
- Four Corners Child Advocacy Center, Cortez, CO: 970.565.8155
- New Day Counseling, Durango, CO: 970.259.5820
- Pine River Shares, Bayfield, CO: 970.884.6040
- Recovery Center – TRC, Cortez, CO: 970.565.4109
- Second Wind Fund: 720.962.0706. This is not a crisis hotline but the fund is available to youths who face social or financial barriers to crisis counseling. The organization requires a referral by a school counselor or mental health professional.
- Sexual Assault Services Organization (SASO hotline) Durango, Bayfield, Ignacio: 970.247.5400
- Southern Colorado Community Action Agency, Inc., Ignacio, CO: 970.563.4517
- Southern Ute Health Center, Ignacio, CO: 970.563.4581 (Serving ALL Indian tribes’ w/proof of documentation)
- Trevor Project: 866.488.7386. Crisis intervention and suicide prevention for LGBTQ youth via online chat, text, or phone
- Ute Mountain Ute Tribe: 970.565.3751

Other resources available to persons who report being the victim of sexual assault, domestic violence, dating violence, or stalking, and those who need addiction assistance or suicide prevention resources, include:

Addiction Resources:

- [211 Colorado](https://www.211colorado.org/) or <https://www.211colorado.org/> or (Confidential, multilingual resources that provides vital resources statewide to include but not limited to: legal assistance, visa and immigration assistance, financial assistance, etc.)
- **Addiction Care and Education** or <https://www.drugrehab.com/>
- **Addiction Guide** or <https://www.addictionhelp.com/>
- **Addiction Group** or <https://www.addictiongroup.org/>
- **Addiction Help Today** or <https://addictionhelp.today/>
- **Addiction Treatment Resources** or <https://www.rehabcenter.net/>
- **Alcohol Addiction** or <https://alcoholaddictioncenter.org/alcoholism-resources/>

Any area underlined is a hyperlink which will direct you to a website.

- Alcohol and Drug Rehab or <https://www.choicepointhealth.com/alcohol-rehab-nj/>
- American Addiction Centers or <https://americanaddictioncenters.org/>
- American Addiction Recovery Centers or <https://recovery.org/>
- Colorado Free Rehab Centers or <https://www.freerehabcenters.net/colorado/>
- Delphi Behavioral Health Group or <https://delphihealthgroup.com/>
- Detox Centers and Drug Rehab or <https://www.detoxrehab.net/>
- Detox Local or <https://www.detoxlocal.com/>
- Drug Addiction Help or <https://www.addictioncenter.com/>
- First City Recovery Center or <https://firstcityrecoverycenter.com/>
- Granite Recovery Centers or <https://www.graniterecoverycenters.com/>
- Live Another Day or <https://liveanotherday.org/>
- Local Addiction Resources or <https://drugrehabus.org/>
- Online Addiction Counseling or <https://www.onlinetherapy.com/addiction-counseling/>
- RehabSpot or <https://www.rehabspot.com/>
- Start Your Recovery or <https://startyourrecovery.org/who/college>
- Substance Abuse and Mental Health Services Administration or <https://www.samhsa.gov/>
- The Recovery Village or <https://www.therecoveryvillage.com/local-rehab-resources/colorado/>

Violence Prevention & Resources:

- Bullying Awareness & Prevention or <https://www.psychology.org/resources/>
- Colorado Anti-Violence Program or <http://www.coavp.org/> Building Safety and Justice for LGBTQ Communities
- Colorado Coalition Against Domestic Violence or <https://www.violencefreecolorado.org/>
- Colorado Coalition Against Sexual Assault or <https://www.ccasa.org/>
- National Domestic Violence Hotline – 800.799.7233. or Text “LOVEIS” to 22522
- National Organization for Victim Assistance: or <https://www.trynova.org/> - 1.800.879.6682
- Rape, Abuse and Incest National Network or <https://www.rainn.org/>
- Violence Awareness & Prevention or <https://www.psychology.org/resources/>

Suicide Prevention:

- [Student Suicide & Depression Awareness Guide](https://www.psychology.org/resources/) or <https://www.psychology.org/resources/>
- [Suicide Prevention Guide](https://www.bestcolleges.com/resources/suicide-prevention/) or <https://www.bestcolleges.com/resources/suicide-prevention/>
- [Suicide Prevention Help and Resources](https://betteraddictioncare.com/treatment-journey/) or <https://betteraddictioncare.com/treatment-journey/>
- Suicide Prevention – Teen Hot Line – 1.800.273.8255
*Crisis Text Line – Text START to 741.741 24 hours
- [The National Suicide Prevention Lifeline:](https://988lifeline.org/) or <https://988lifeline.org/> - 988 OR 800.273.TALK (8255)

Important PCC Public Safety Internet Links

- [Pueblo Community College](https://pueblocc.edu/) or <https://pueblocc.edu/>
- The [PCC Police Department](https://pueblocc.edu/public-safety) or <https://pueblocc.edu/public-safety>
- The [Daily Crime Log](https://pueblocc.edu/Crime-Log) or <https://pueblocc.edu/Crime-Log>
- The [Crime Statistics](https://pueblocc.edu/public-safety) or <https://pueblocc.edu/public-safety> See [Annual Security Reports](https://pueblocc.edu/public-safety) or <https://pueblocc.edu/public-safety>
- [Safety Tips](https://pueblocc.edu/Safety-Tips) or <https://pueblocc.edu/Safety-Tips>

Pueblo Community Colleges' Geographic Descriptions

[Pueblo Community College](https://pueblocc.edu/) (PCC) or <https://pueblocc.edu/> is a two-year public comprehensive community college, one of thirteen community colleges within the [Colorado Community College System](https://cccs.edu/) (CCCS) or <https://cccs.edu/>. PCC has five (5) locations serving students in a widely dispersed eight-county region in Southern Colorado.

The main campus is located in Pueblo, Colorado serving Pueblo County. The Fremont Campus, located approximately 35 miles (56 km) west of Pueblo in Cañon City, CO, serves Fremont and Custer Counties. The PCC Southwest Colorado Community College Campus, 280 miles (450 km) southwest of Pueblo, operates three (3) campus/sites: The PCC Southwest Campus, located on Highway 160 between Mancos and Cortez CO; the PCC Southwest Site (Durango), located at the Durango High School, 2320 Main Avenue, Durango, CO, both serve the Montezuma, Dolores, La Plata, San Juan, and Archuleta Counties, and the PCC Southwest Site (Bayfield) located at 110 East South Street. In addition, the College has a Downtown Studio located in the heart of downtown Pueblo.

Pueblo Campus

The Pueblo Campus: located at 900 W. Orman Avenue, Pueblo CO 81004 is the main campus surrounded by a residential area. The campus has eight (8) buildings on 33 acres serving approximately 3,622 students. The campus is bordered by Harrison Street on the east, Marilyn Place on the southeast, Cleveland Street on the west, Adams Street on the south, and Pitkin Avenue on the north. West Orman Avenue, a city owned street, runs east and west through the center of the campus.



Downtown Studio/Small Business Development Center

The Pueblo Community College Downtown Studio and the Small Business Development Center (SBDC) occupy space in a one block area building on the lower level southeast corner located at 150 West City Central Drive and Main Street, Pueblo, CO 81004 in downtown Pueblo. The Studio and SBDC are approximately 2 miles from the PCC main campus. The building is bordered by Santa Fe Street to the east, Main Street to the west, West 2nd Street to the north and City

Center Blvd., to the south. Other commercial businesses also occupy space in the same building and other commercial businesses surround the building on the west and north sides.

The Downtown Studio was established as a drop-in location to help PCC fulfill its mission to grow and support the veteran community by reaching out to all generations of veterans and actively helping them transition from military service to college life. Since its opening, the Studio also serves as a drop in one-stop service office for other displaced workers needing to make a transition to college life on PCC's main campus and equally serves new and current students at this location.

The Small Business Development Center provides free business services to new and prospective small business owners in Pueblo, Fremont, and Custer counties.

Cosmetology Location

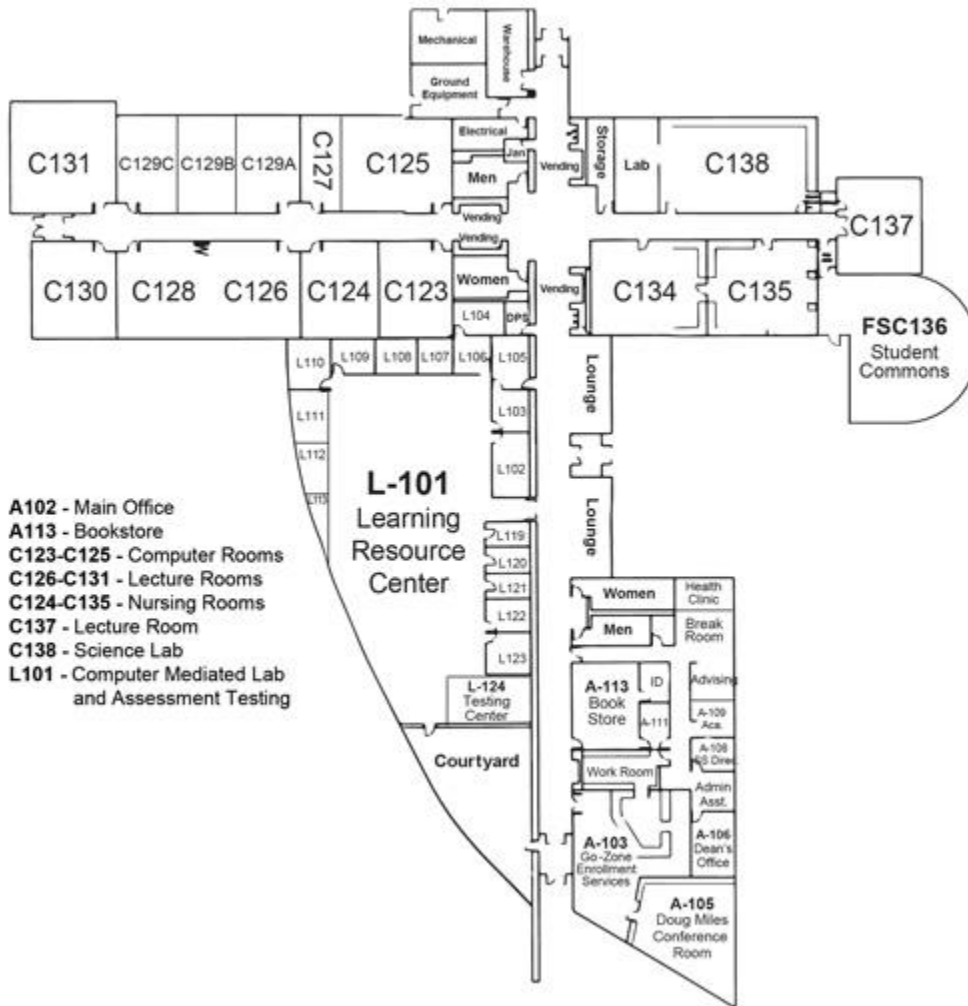
The Pueblo Community College Cosmetology program rents space and is located at 700 W Abriendo Ave, Pueblo CO 81004. The building is bordered by Abriendo Ave. on the northeast and Lincoln Ave. on the southeast.

St. Mary Corwin Location

Pueblo Community College occupies the East Tower of the St. Mary Corwin Hospital located at 1000 Minnequa Avenue, Pueblo, CO 81004 which consists of the first through the sixth floors. Simulation House is located across the street on Orman Avenue east of St. Mary Corwin Hospital. It also provides PCC designated parking. Refer to the map below.

Fremont Campus

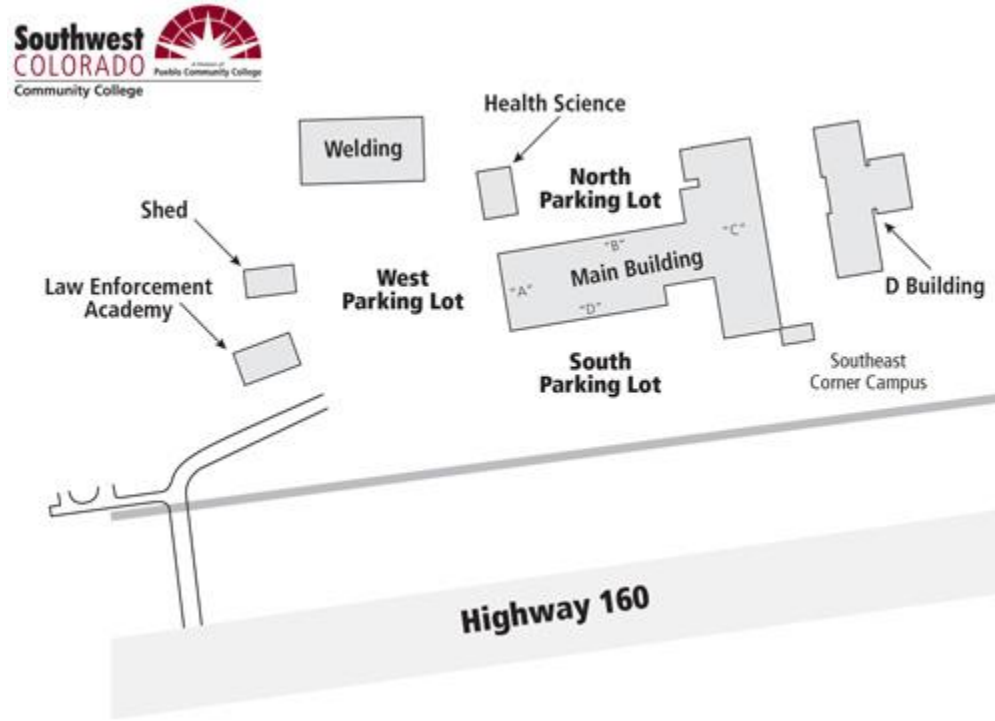
The Fremont Campus - located at 51320 West Highway 50, Cañon City, CO 81212. The campus is comprised of a single multipurpose building which accommodates offices and classrooms. The campus faces Highway 50 and is surrounded by vacant land.



PCC Southwest Community College Campus and Sites

The PCC Southwest is comprised of one campus and two sites:

PCC Southwest Campus (Mancos) – located at 33057 Highway 160, Mancos, CO 81328 is situated in between the cities of Mancos and Cortez, CO. The campus has six buildings on the campus property and is surrounded by vacant land.



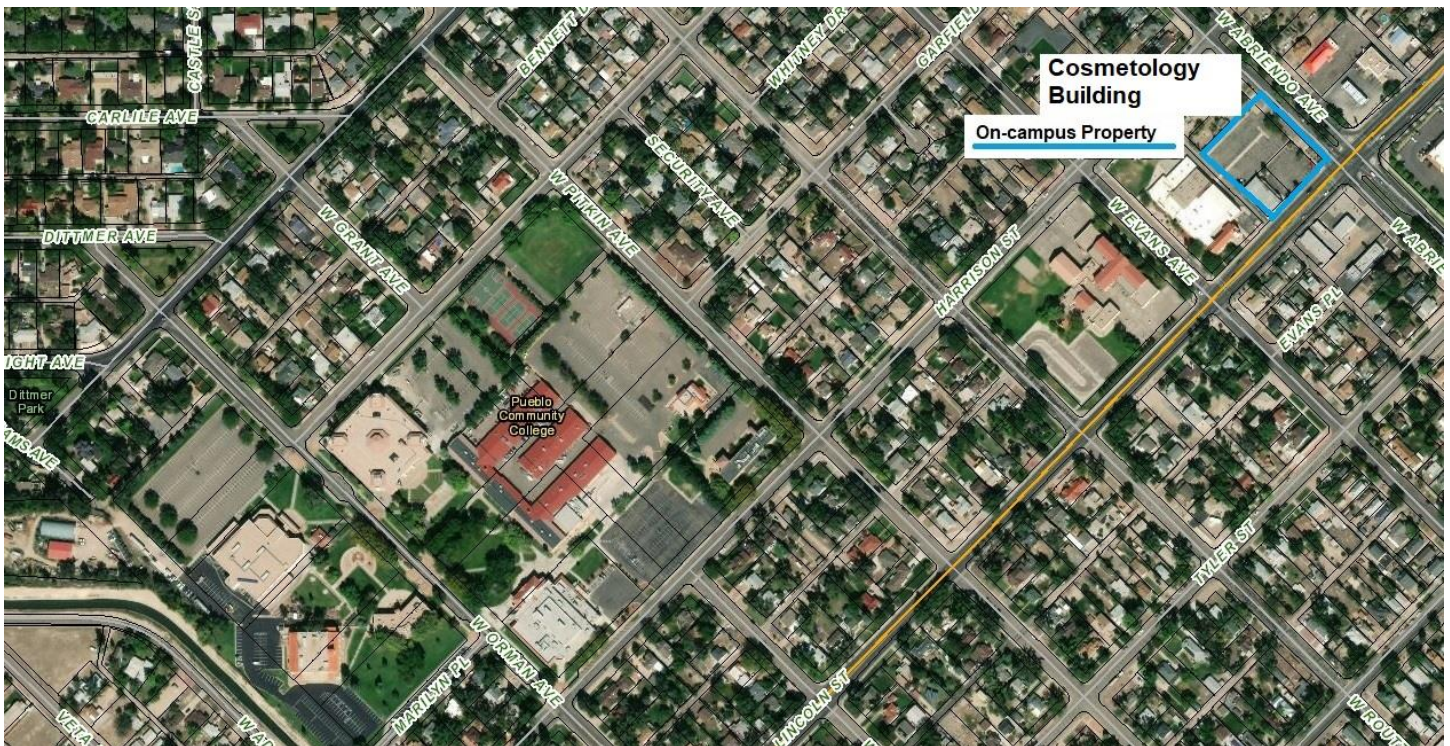
Southwest Site (Durango) – Through a partnership between Pueblo Community College (PCC) and Durango School District 9-R, PCC Southwest Durango site is located in the West wing of the Durango High School, 2320 Main Ave, Durango, CO 8130. The Durango site will have a separate entrance and designated parking on the DHS campus.

Southwest Site (Bayfield) – Pueblo Community College and the Bayfield School District are partnering to offer college courses to Bayfield High School students and the community. PCC will operate a site at 110 East South Street, the former location of Bayfield Primary School. The campus is comprised of a single multi-purpose building, which accommodates offices and classes. The building is bordered by East South Street and South East Street.

PCC Aerial View of Locations PUEBLO CAMPUS

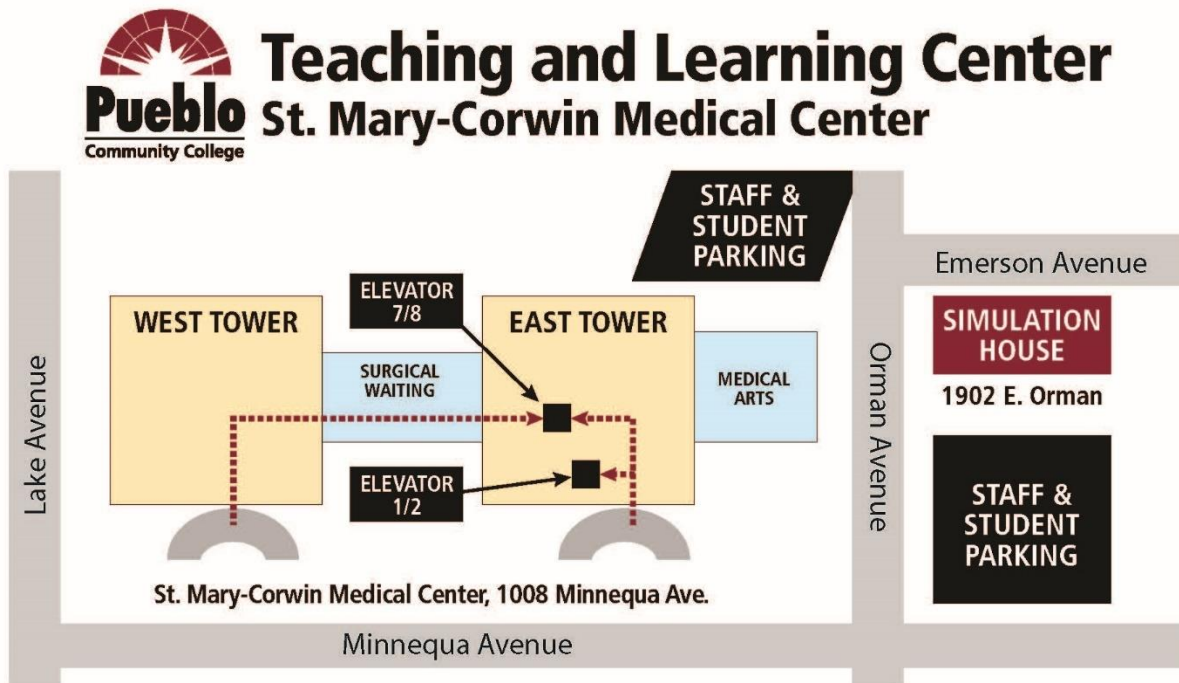
PCC Pueblo Campus,
900 West Orman Ave
Pueblo, CO 81004

———— Campus Boundary – State Owned
- - - - - Public Property



Any area underlined is a hyperlink which will direct you to a website.

PCC Aerial View of Locations
 PUEBLO CAMPUS ST. MARY CORWIN (SMC)



- Simulation Center and Nursing**
 2nd floor, 2100-2300
 Access through the East Tower entrance, elevator 1/2 or 7/8
- Faculty Offices**
 2nd floor, Suite A200
 Access through the East Tower entrance, elevator 1/2
- Surgical Technology and Medical Assisting**
 6th floor, 6200-6300
 Access through the East Tower entrance, elevator 1/2 or 7/8

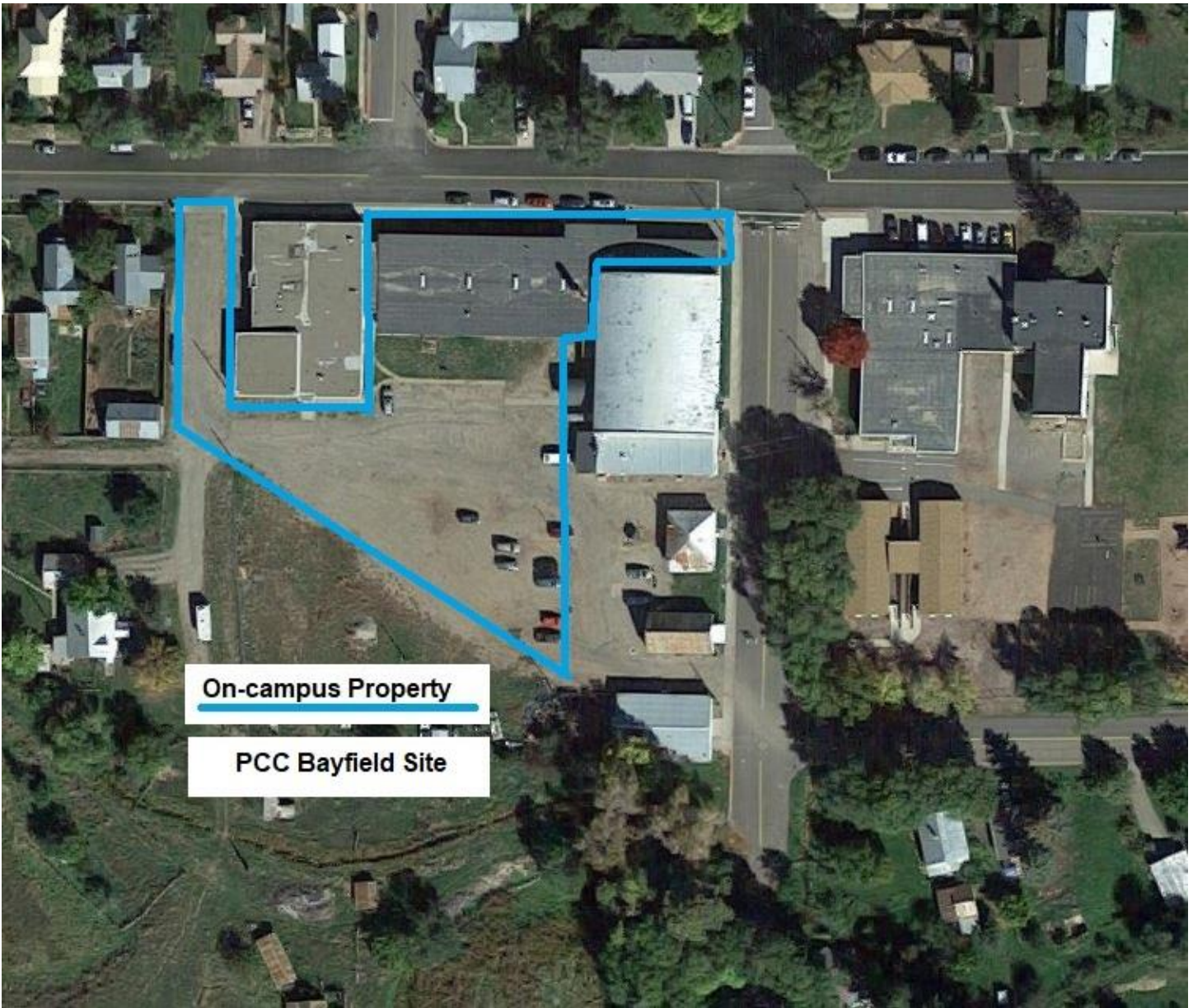
- Radiologic Technology Lab – 2nd floor, 2200**
Radiologic Technology Classroom – 3rd floor conference room
 Access through the East Tower entrance, elevator 1/2
- Pharmacy Technician – 3rd Floor, 3202**
Innovation Studio – 3rd floor, 3218
 Access through the East Tower entrance, elevator 1/2
- Occupational Therapy Assistant**
 4th floor
 Access through the East Tower entrance, elevator 1/2

FREMONT CAMPUS



Any area underlined is a hyperlink which will direct you to a website.

PCC SOUTHWEST SITE – BAYFIELD



Any area underlined is a hyperlink which will direct you to a website.

PCC SOUTHWEST SITE – DURANGO HIGH SCHOOL



Any area underlined is a hyperlink which will direct you to a website.

PCC SOUTHWEST SITE PARKING AREAS- DURANGO HIGH SCHOOL

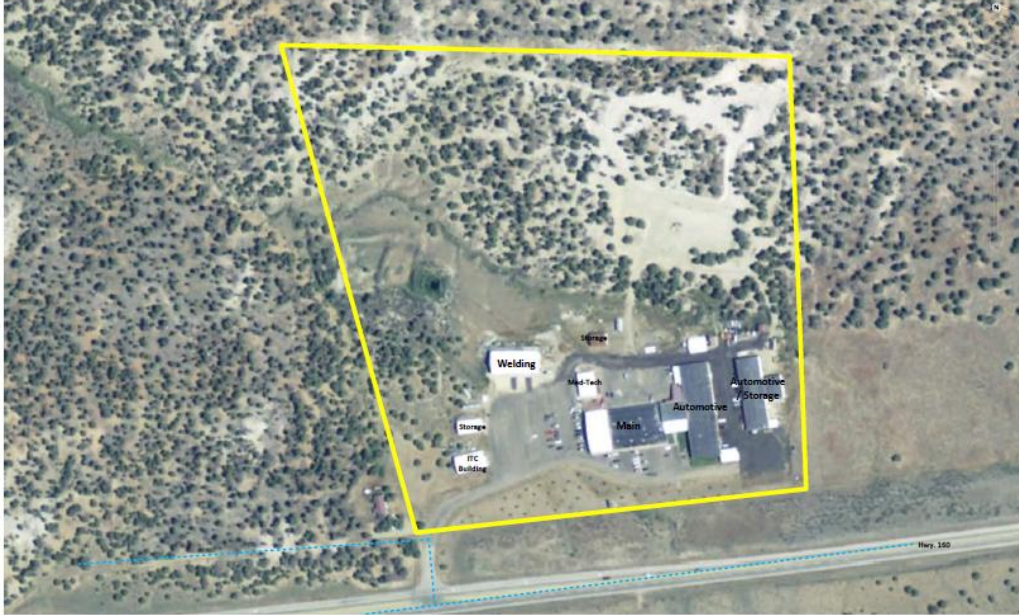


Any area underlined is a hyperlink which will direct you to a website.

PCC SOUTHWEST CAMPUS – MANCOS

PCC SCCC West Campus,
33057 Hwy. 160
Mancos, CO 81328

— Campus Boundary – State Owned
- - - - - Public Property



Statement of Non-Discrimination

Notice of Non-Discrimination

Pueblo Community College prohibits all forms of discrimination and harassment including those that violate federal and state law or the State Board for Community Colleges and Occupational Education Board Policies 3-120 and 4-120. The College does not discriminate on the basis of sex/gender, race, color, age, creed, national or ethnic origin, physical or mental disability, veteran status, pregnancy status, religion, genetic information, gender identity, or sexual orientation in its employment practices or educational programs and activities. Pueblo Community College will take appropriate steps to ensure that the lack of English language skills will not be a barrier to admission and participation in vocational education programs.

The College has designated the Vice President of Human Resources as its AA/EEO and Title IX Coordinator, with the responsibility to coordinate the college's Civil Rights Compliance Activities and Grievance Procedures. If you have any questions, please contact the Vice President of Human Resources, 900 W. Orman Avenue, Central Administration Building, Room 111, telephone 719.549.3220, email pcchr@pueblocc.edu. You may also contact the Office for Civil Rights, U.S. Department of Education, Region VIII, Federal Office Building, 1244 North Speer Blvd., Suite 310, Denver, CO 80204; phone: 303.844.3417.

Aviso de no discriminación

Pueblo Community College (PCC) prohíbe todas formas de discriminación y acoso, inclusive violación de leyes federales y estatales o las políticas educativas 3-120 y 120 4 del Consejo Estatal de Colegios Comunitarios y Laborales. El Colegio no discrimina en base al sexo/género, raza, color, edad, credo, origen nacional o étnico, incapacidad física o mental, estado de veterano, estado de embarazo, religión, información genética, identidad de género o orientación sexual en sus prácticas de empleo, programas educativos, o actividades que ofrece el Colegio. PCC tomará medidas apropiadas para asegurar que la falta de conocimientos del idioma inglés no será un impedimento para la inscripción y participación en programas de educación vocacional.

El Colegio ha designado el Vicepresidente de Recursos Humanos como su Coordinador de AA/EEO y Título IX, con la responsabilidad de coordinar las actividades de cumplimiento de los derechos civiles de la universidad y los procedimientos de quejas. Si tiene alguna pregunta, comuníquese con el Vicepresidente de Recursos Humanos, 900 W. Orman Avenue, Central Administration Building, Room 111, teléfono 719.549.3220, correo electrónico pcchr@pueblocc.edu. También puede comunicarse con la Oficina de Derechos Civiles, Departamento de Educación de los Estados Unidos, Región VIII, Edificio de Oficinas Federales, 1244 North Speer Blvd., Suite 310, Denver, CO 80204; teléfono: 303.844.3417.